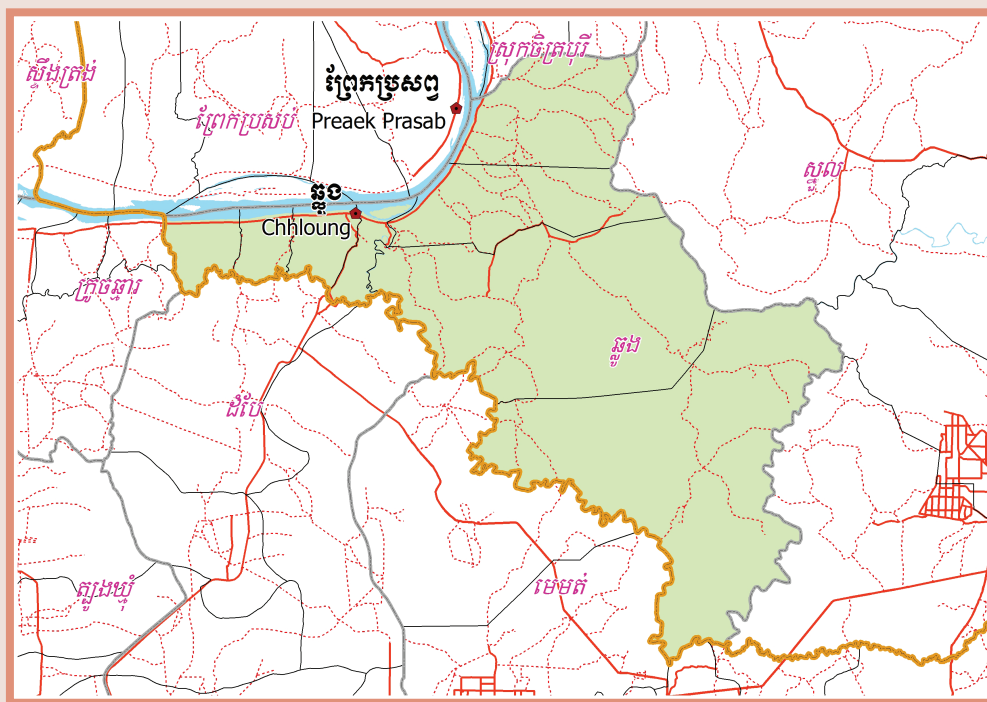


A decorative horizontal line featuring a central flower-like motif flanked by symmetrical, flowing scrollwork or leaf-like patterns on both sides.



October 2009

Chhloung District Data Book 2009

District Code Nr: 1001

Kracheh Province

Table of Contents

List of Abbreviations	i
Glossary.....	ii
Preface	vi
Introduction	vii
SECTION A: GEOGRAPHY	1
1 Administration and Infrastructure.....	3
2 Land Use and Natural Resources.....	5
3 Geography	7
3.1 Land Area	7
3.2 Distances between Offices	7
SECTION B: DISTRICT PROFILE	9
1 General Information	11
1.1 Population of the District.....	11
1.2 Occupations	12
1.3 Property	14
2 Infrastructure and Economy.....	16
2.1 Roads in meters over 3 years.....	16
2.2 Sewerage Pipes in meters over 3 years.....	16
2.3 Drainage and Bridges	16
2.4 Services in the District	16
2.5 Agriculture.....	17
3 Social Aspects	27
3.1 Education	27
3.2 Health.....	33
3.3 Water and Sanitation	35
3.4 Vulnerable groups.....	39
3.5 Migration	41
4 Natural Resources and Environment (NRE).....	42
4.1 Families involved with NRE issues over 3 years	42
4.2 Percentage of Families involved with Natural Resource issues, by Commune, for 2008	42
4.3 Percentage Houses with access to Garbage collection and Families affected by environmental Pollution, by Commune, for 2008	43
4.4 Percentage Families using chemical Fertilizer and chemical Pesticides, by Commune, for 2008 ..	43
5 Administration and Security	43

5.1	Birth Registration across 3 years.....	43
5.2	Number of unregistered Infants born in 2008, by Commune	43
5.3	Registered criminal Cases over 3 years	44
5.4	Registered criminal Cases per 10,000 people, by Commune, for 2008.....	44
5.5	Number of registered Land Disputes, by Commune, in 2008	44
6	Gender	45
6.1	Registered Domestic Violence over 3 years.....	45
6.2	Percentage of registered cases of Families experiencing domestic Violence, by Commune, in 2008	45
6.3	Women's involvement over 3 years.....	45
6.4	Percentage of Female Participants in Civil Society and of 18-60 year women with uncertain Jobs, by Commune, in 2008	46
6.5	Female-headed Households over 3 years.....	46
6.6	Percentage female-headed Households and with Children of less than 5 years old, by Commune, in 2008	46
7	Indigenous People in the District	47
7.1	Ethnic Minorities in the District over 3 years.....	47
7.2	Other Minorities in the District over 3 years.....	47
	SECTION C: PLANS AND PROJECTS	49
8	Priorities and Plans	51
8.1	Priorities of Commune Councils for 2009 in the District by Sector	51
8.2	Temporary Agreements by Commune, for 2009	59
8.3	Outputs, estimated and actual costs of C/S Fund Projects between 2005 and 2008, by Commune	68
8.4	Total Expenditure on C/S Fund Projects by sector and commune between 2005 and 2008.....	70
8.5	Actual 2009 C/S Fund projects by Commune	70
9	District level Projects from 2006 to 2009	71
9.1	District Initiative Infrastructure Projects from 2006 to 2009	71
9.2	District Initiative Service Projects from 2006 to 2009	72
9.3	Inter Commune Council Projects in 2008 and 2009	73
9.4	Other Projects in 2008 and 2009	73
	SECTION D: SERVICES AND ORGANIZATIONS	75
10	Infrastructure.....	77
10.1	Length of and Expenditure on Roads in 2008, by District	77
10.2	Scale of and Expenditure on Irrigation in 2008, by District.....	77
10.3	Power Supply in 2008, by District	77
11	Health Facilities.....	78

11.1 Health Facilities in the Province, by Operational District.....	78
11.2 Health Facilities and Staff in the province, by Operational District.....	78
11.3 Deliveries in 2007 in the Province, by Operational District.....	79
12 Education	80
12.1 Schools, Classes, Students, Staff, for for all levels, for 2007/2008 by District.....	80
12.2 Characteristics of Schools and School Principals for 2007/2008 by Commune	80
12.3 Enrolment by Level of Education, 2006/2007 by Commune	81
12.4 Enrolment by Level of Education, 2007/2008 by Commune	81
12.5 Aspects of Enrolment for 2007/2008 by Commune.....	81
12.6 School Buildings for all schools in the District for 2007/2008, by Commune	82
12.7 Conditions of Classrooms and Existence of Separate School Office and Library, by Commune	82
12.8 Community Participation and Financing across all schools in the District for 2007/2008 by Commune	83
12.9 Percentage Student Flow Rates and Graduation by level 2006/2007, by Commune	83
13 Staff and Resources at the District	84
13.1 District Councilors elected in 2009	84
13.2 Committees of the Council.....	84
13.3 Board of Governors.....	85
13.4 Offices under Sala Krong, Sala Srok and Sala Khan	85
13.5 Municipality/District/Khan line offices.....	85
13.6 Properties and Equipment of District Administration	85
13.7 Registered Revenue of the District Administration in 2008	86
13.8 Services in the District	87
13.9 Civil Society Organizations active in the District.....	87
13.10 Private Sector Organizations.....	88
SECTION E: POVERTY DATA	89
14 Data on Poverty	91
14.1 Predicted Poverty Rates for 2009, by commune	91
14.2 Poverty data from survey.....	91

List of Abbreviations

#	Number
AGR	Agriculture
BR	Birth Registration
C. Pilot	Piloted Commune
C/S	Commune / Sangkat
CBO	Community-Based Organization
CDB	Commune Database
CDPD	Commune Development and Planning Database
CIP	Commune Investment plan
CLTS	Community Led-Total Sanitation
Comm.	Commune
Com Cov	Commune Covered
CPA	Complementary Package of Activities
CPS	Community Preschool
CCWC	Commune Committees for Women and Children
DANIDA	Danish International Development Agency
DDLG	Democratic Development and Local Governance Project (EC-UNDP)
DFID	Department For International Development (UK)
DIP	District Initiative Project
DIS	District Information System
District PDRD	District Office of Rural Development
District WP	District Work Plan
DIW	District Integration Workshop
DoLA	Department of Local Administration
Dr	Doctor
DWRM	District Office of Water Resource and Meterology
ECD	Early Childhood education (part of PE)
EMIS	Education Management Information System
Event IC	Celebration of International Days
FDH	Former District Hospital
GTZ	German Society for Technical Cooperation (Gesellschaft für Technische Zusammenarbeit GmbH)
Ha	Hectare
HC	Health Center
HC (NB)	Health Center (no building)
HH	Headed Household
HSI	Intervention for Health
HP	Health Post
HW	Hand Washing
ICC	Inter Commune Council
IFAD	International Fund for Agricultural Development
IND	Industry
Inter-commune	Inter-Commune Project Management Committee or Inter-commune project
IO	International Organization
LASED	Land Allocation for Socio-Economic Development
LGCR	Local Governance for Children's Rights
M&E	Monitoring and Evaluation
MA	Medical Assistant
MoEYS	Ministry of Education, Youth and Sports
MoH	Ministry of Health

MoP	Ministry of Planning
MPA	Minimum Package of Activities
MW1	Primary Midwives
MW2	Secondary Midwives
n/a	Not available
NCD	National Contracts Database
NCDD	National Committee for Sub-National Democratic Development
NGO	Non-Governmental Organization
NRML	Natural Resources Management and Livelihood
NU1	Primary Nurse
NU2	Secondary Nurse
OD	Operational District
ODF	Open Defecation Free
Ope. Costs	Operational Costs
Others	Other Staff
PBW	Public Works
PDoEYS	Provincial Department of Education, Youth and Sport
PDRD	Provincial Department of Rural Development
PDWRM	Provincial Department of Water Resource and Meteorology
PE	Parenting Education
PHAST	Participatory Hygiene and Sanitation Transformation
PHD	Provincial Health Department
PID	Project Information Database
PMC	Project Management Committee
Pop 04-05	Population Covered 2004 or 2005
PSDD	Project to Support Democratic Development through Decentralization and Deconcentration
RRD	Rural Road Development
RH	Referral Hospital
RILGP	Rural Investment and Local Governance Project
RPRP	Rural Poverty Reduction Program
RuLIP	Rural Livelihoods Improvement Program
SIDA	Swedish International Development Cooperation Agency
SPPA	Senior Provincial Program Advisor
TBA	Traditional Birth Attendant
UNDP	United Nations Development Project
UNICEF	United Nations Children's Fund
Vil	Village
Vil Cov	Village Covered
VIL-HC	Distance from Village to Health Center
WASH	Water, Sanitation and Hygiene
WRM	Water Resource and Meteorology

Glossary

C/S Fund: The Commune/Sangkat Fund is established and managed by the Government of Cambodia to provide financial support for development projects and administrative costs of Commune/Sangkat Councils. The amount is determined as a percentage of the National Budget (for 2009: 2.8% over the 2008 budget) and is expected to increase gradually over the years. The total 2009 budget under this fund is \$ 27,643,902 (of which \$ 19,272,170 is for Development Projects and \$ 8,371,731 for Administration). Under the Rural Investment and Local Governance Project the World Bank currently reimburses the costs of development projects if these meet the Bank's criteria.

CDB: the Commune Data Base is a national database, compiled by the Ministry of Planning, on the basis of detailed questionnaires, completed at village and commune level, which are then sent to the Departments of Planning for data entry. The most recent round of data collection took place at the end of 2008 (and is reflected in the District Data Books). Commune, District and Provincial Profiles can be generated from this database and should be available from provincial Departments of Planning.

CDPD: the Commune Development and Planning Database is a database maintained by Departments of Planning and Ministry of Planning, recording proposed activities as determined and prioritized by Commune and Sangkat Councils; the Temporary Agreements between these councils and supporting agencies, as decided at District Integration Workshops and details on projects that actually take place at commune, district and provincial levels.

CIP: The Commune Investment Plan is a rolling three-year plan, developed and decided by the Commune or Sangkat Council. It sets priorities and identifies the projects proposed for the years to come.

Commune and Sangkat (C/S): the Communes (in rural areas) and Sangkats (in urban areas) are the lowest and smallest units of local government. Councils are elected directly, once in five years, for the 1417 Communes and 204 Sangkats. In the C/S there are 14,119 villages, which have Village Chiefs, but don't constitute a formal level of local government.

DIP: the District Initiative Project is jointly supported by the MDLF (Multi-Donor Livelihood Facility (supporting the NRM&L Program)) and PSDD. In 2009 it covers 106 districts, 60% of the total in the country, with a budget of \$ 3.2 million. It is focused on capacity development in planning, democratic development, public competitive procurement, financial management and service delivery.

DIS: The District Information System is a national database maintained by NCDD, recording resources, staff, revenue, infrastructure and equipment available in the 193 Districts and Khans throughout the country. The last update took place in July 2009.

District, Municipality and Khan constitutes the third level of Government in Cambodia. There are 159 rural Districts, 26 Municipalities and 8 Khans of Phnom Penh Capital. They all have Councils which were, for the first time, elected in May 2009, by the Commune/Sangkat Councilors. These councils have a mandate for 5 years.

DIW: District Integration Workshops are held between July and October, to bring Commune/Sangkat Councils, looking for support for their projects, together with the governmental and non-governmental agencies that may provide support.

ICC: Inter Communes Council projects are executed in 10 provinces under the Democratic and Decentralized Local Governance Project (DDLG). This five year project (2006-2010) is executed by Ministry of Interior and funded by the European Commission and UNDP. The project focuses on improving dialogue partnership and accountability; create a network of Commune Councils at the provincial and national level and support and contribute to local area development for poverty reduction. The work under the ICC component supports investments and services formulated through inter-commune dialogue and planning.

MEDiCAM: A non-profit and non-partisan membership organization for NGOs active in Cambodia's health sector. It is the primary networking agency for health-related NGOs.

NCDD: the National Committee for sub-National Democratic Development is the inter-ministerial body charged with the implementation of the Organic Law (a key legislative document, adopted in 2008, outlining the envisaged decentralization). NCDD also channels substantial financial assistance by a number of Development Partners, to projects and programs at various levels. This amounted to over \$ 91 million in 2008. More information at: www.ncdd.gov.kh. This website also provides access to reports, manuals, legal documents, details on projects and more.

OD: the Operational Districts are the districts as defined and used by the Ministry of Health. These do not coincide with the 193 (Administrative) Districts and Khans, as used by all other RGC agencies. The Operational Districts are usually larger, and so there are 77 Operational Districts against 193 administrative Districts and Khans. However they do fit within the boundaries of administrative provinces.

PID: The Project Information Database is the database maintained by NCDD at national and sub national level, to follow all aspects of projects by Commune and Sangkat Councils, including the C/S Fund projects

Provincial Investment Fund (PIF)

The Provincial Investment Fund is allocated to all Provinces and Municipalities according to a population based formula. Part of the fund is earmarked for support to planning activities of the Provincial / Municipal Department of Planning; and to gender mainstreaming activities of the Provincial Department of Women's Affairs. The remaining "un-earmarked PIF" is allocated by PRDC to sectoral technical departments against established criteria and in response to proposals with prioritisation taking into account: priorities formulated by the CS Councils and aggregated by District into District Priority Activities Matrices (DPAM); alignment with national planning and poverty alleviation criteria, complementarity with other planned activities; and performance of the Department concerned in implementation of activities in previous years. With this provisional allocation, the Department then programs activities through the District Integration Process. Finally, the agreed activities, plus support costs amounting to no more than 25% of the total, are included in a sub-contract signed between PRDC and the Department, pursuant to the overall PSDD contract signed between NCDD and PRDC. Total budget has been around \$ 2 million per year.

Province: the 23 Provinces and Phnom Penh Capital City represent the 2nd layer of government. They vary in size, from very small, like Kep (approx. 36,000 people) and Pailin (approx. 70,000 people), or large but with small populations, like Mondulkiri (over 60,000 people), and Ratanakiri (over 153,000) to densely populated and large, like Kampong Cham (over 1.7 million people) and Kandal (approx. 1.4 Million people).

PSDD: the Project to Support Democratic Development through Decentralization and Deconcentration is funded by DFID (UK), SIDA (Sweden) and UNDP and runs from 2006 till the end of 2010 (including a one year extension). Annual budgets range from \$ 11 million to over \$ 18 million. The project provides core technical support to NCDD and to the provinces, financial support to the C/S Fund, District Initiative, Provincial Investment Fund and capacity building support through training, studies and advisory services.

RILGP: The Rural Investment and Local Governance Project is a World Bank funded project that provides substantial support to C/S Fund projects and to developing the required infrastructure, policies, systems and skills. It started in 2003 with a Loan for \$ 22 million for 2003-2007 and was then extended with a Grant of \$ 36 million for the period of 2007-2010. Discussions about a possible RILGP 2 are taking place between RGC and the World Bank.

RPRP: the Rural Poverty Reduction Project is a seven year project from 2004 till 2010, funded by IFAD and UNDP and implemented through the Ministry of Agriculture, Forestry and Fishery, supported by the Ministry of Interior and facilitated by NCDD. The project is active in the provinces Prey Veng and Svay Rieng and focuses on 120,600 households below poverty line. The objective is poverty reduction with the active participation of the poor through improved livelihoods, Strengthened capacity, Sustainable farming systems and natural resource management, new and/or rehabilitated infrastructure development, increase accessibly to technology, services and markets for their economic and social development.

RULIP: the Rural Livelihoods Improvement Project is implemented by the Ministry of Agriculture Forestry and Fisheries (MAFF)' Project Support Unit- PSU, with the NCDD playing the role of cooperating agency. Funded by IFAD and UNDP, the project will run till 2014. The target group consists of poor households who have little or even no land, few livestock or other assets and often many dependents. The main goal of the project is to directly or indirectly improve the livelihood systems, food security and incomes of a total of 33,900 rural poor, ethnic minority and female headed households in targeted village of Kratie, Preah Vihear and Ratanakiri provinces in a sustainable manner.

Seth Koma: The UNICEF funded Seth Koma program focuses on measurable action for children and women. During 2006 -2010 it is implemented in six provinces. Government and UNICEF pursue a set of inter-related goals, addressing critical stages of the life cycle of the child: a) Mothers have safe pregnancies and deliveries and healthy newborns; b) best possible start in life of infant; c) Children enter schools at the right age of six years; d) Children are protected from exploitation, abuse, violence, discrimination and other risks; and e) Youth and adolescents acquire life skills, express their views, participate in the decisions.

Preface

The Government of Cambodia attaches great importance to optimal use of scarce resources and to participatory planning and management at all levels. The Organic Law which was adopted in 2008 provides the legal context for further steps towards improving and decentralizing planning, management and monitoring, and towards greater accountability and transparency of institutions at sub-national levels.

The Government has established elected Councils at the sub-national levels, and we will progressively give them the responsibilities, together with the human and financial resources, to deliver a wide range of public services. They will be more democratic, more efficient, more transparent and accountable, better at addressing gender and other inequalities, and at fighting corruption. We recognize that development does not come from government alone; it needs the involvement of citizens, civil society and the private sector, and the new system will facilitate this.

A central element in this process is the availability of information on any aspect of development to all concerned parties. The newly elected Councillors at District and Khan level, line departments operating at these levels, but also NGOs, Development Partners, Commune Councillors and citizens throughout Cambodia need information on problems and requirements, resources and opportunities, services and agencies, plans and projects. They will need such information to better understand the present situation, set targets for the future, monitor progress, know what others are doing and to apply resources wisely and this is the reason the District Data books will be so valuable.

The District Data Books are a major step towards full transparency and towards informed planning and decision-making. They provide all available data at District, Khan, Commune and Sangkat level in easily accessible formats, in Khmer and English, through over 16,000 printed copies, CD-ROMs and the NCDD website.

This is the first time in Cambodia (and possibly in South East Asia) that such detailed information is made so widely available and NCDD should be commended for the hard work that has gone into this. We also thank the Ministry of Planning, which provided the detailed data of the Commune Data Base, the sectoral ministries and provincial authorities who contributed data and the Development Partners who provided financial support.

It is our sincere hope that the publication of the District Data Books will strengthen capacities, especially at district levels, for evidence-based development planning. We also hope that this information will deepen the understanding among Ministries, Provincial Authorities, Development Partners, NGOs and research agencies of the realities at commune and district levels.

We call upon all to use and distribute this information, complement or correct where appropriate and to contribute new data in the years to come.

Sar KHENG

Deputy Prime Minister, Minister of Interior and Chairman of NCDD

Introduction

Purpose

The purpose of the District Data Books is to bring together information on any aspect of life and development of Districts, Khans, Communes and Sangkat, together and make this widely available. The primary targets are the newly elected District Councilors, district level line departments, provincial agencies, Development Partners and NGOs operating at this level. They need detailed knowledge on current living conditions, natural resources, infrastructure, agriculture and other economic activities, current service levels, past and planned projects and available resources.

While much information exists on many of the above aspects, it is often hard to access that information and much is lost to reports, databases and statistics that are not widely shared. Data are often only available in one language and often out-of-date, and many reports cover only one sector or region.

We found that these problems are especially acute at the district level. Now that Districts are becoming a much more significant level of local government and development planning, there is an urgent need for wide-ranging data to be used for setting base-lines, planning and prioritizing, monitoring and learning.

Approach

We have attempted to identify and compile all available statistics, reports, maps and other data at district and/or commune level. From this we have selected information that is available for all or most districts, reasonably reliable and up-to-date, sufficiently detailed and of possible interest to development planners, decision makers, agencies and citizens.

The major sources of the information in these District Data Books are:

- a) The Commune Data Base information over the years 2006 to 2009 (the most recent data were collected late last 2008), as compiled by the Ministry of Planning
- b) Detailed information directly collected from the Ministry of Health, the Ministry of Education, Youth and Sports and (for maps) the Ministry of Land Management, Urban Planning and Construction
- c) The Project Information Database (PID) at NCDD (up-to-date)
- d) The Commune Development and Planning Database (CDPD) (up to date)
- e) The District Information System (DIS) (updated per Mid 2009)
- f) Direct data collection at provincial and district level on private sector, irrigation, roads, and electricity, through provincial agencies
- g) Medical data collected from MEDiCAM
- h) The ID Poor Project – for poverty data on a number of provinces and districts
- i) NCDD's work on predictive poverty rates
- j) Specific projects for outputs, plans and budgets (Seth Koma, RILGP, RPRP and ICC)

Limitations of the data

We are fully aware that the data we collected are not always complete, consistent or correct. While we have rejected information that was wrong or very incomplete, we decided not to aim for statistical and scientific perfection, but to include information that is useful, relevant

and comprehensive. We also accepted different sources for the same data as this may encourage discussion on the quality of the respective data.

We strongly encourage anyone who notes errors or incompleteness in these data to contact us and to share their data. We hope that the next round of producing such District Data Books can draw on wider sources and more complete data.

We encourage the District Administrations, who receive these data also in digital format, not only to use these for their planning and monitoring, but also to start correcting and updating these data and to share new data with NCDD for future use.

Contents

The information in the following pages is organized in five sections:

- a) **Geographical data:** this section provides maps on infrastructure and administration and on land use and natural resources management. These maps are also provided in large format to all Districts and Khans.
- b) **District Profile:** this presents wide ranging data, covering 2006 – 2009, at district and commune level, extracted from the Commune Data Base, but edited for better understanding.
- c) **Plans and Projects:** this section presents development priorities determined by Commune and Sangkat Councils, Temporary Agreements, outputs and expenditure of major projects at Commune and District level over 2006 – 2008 and plans and budgets for 2009.
- d) **Services and Organizations:** this section provides details on key infrastructure (roads, electricity, irrigation systems) and services in health and education at district and commune level. It also provides an inventory of resources at the District Administration, NGOs operating in the district and private sector agencies active in the district.
- e) **Poverty Data:** this section provides predicted poverty rates for 2009 for all districts and communes and detailed poverty data compiled and processed by the ID Poor project for those that have been covered by this project.

The future

It is our hope that this is the start of a longer-term process. We hope that a next edition of these District Data Books will offer more comprehensive, correct and up-to-date information. We hope that the District Administrations will not only start using this information, but also improve and update it. For this they are all provided with the full data set in digital format.

We invite agencies, projects and experts to send reports, statistics and maps that could be used for a next version to us and we invite all users of the District Data Books to inform us about errors, updates and inconsistencies. Please contact us through info@ncdd.gov.kh

We now invite you to browse through this data book. You may open this randomly or use the table of contents and go to the aspects that have your special interest.

We hope that you will be informed, surprised and assisted. We hope, above all, that this information will lead to a deeper understanding of causes and effects of poverty, to purposeful decisions on how to tackle those causes and to greater transparency in using scarce resources for the benefit of all.

Martin de Graaf
Program Advisor, PSDD/NCD

SECTION A: GEOGRAPHY

1 Administration and Infrastructure

Please see separate folder containing A3 maps.

2 Land Use and Natural Resources

Please see separate folder containing A3 maps

3 Geography

3.1 Land Area

Total Land Area (ha)	Forest Land Area (ha)		Cultivation Land Area (ha)	Construction Land Area (ha)	Other Land Area (ha)
	Total	Flooded Forest Area			
104700	90042	245	5309	9349	0

3.2 Distances between Offices

Location	Distance (Km)
From District Office to C/S Office of Chhloung	1
From District Office to C/S Office of Damrei Phong	18
From District Office to C/S Office of Han Chey	3
From District Office to C/S Office of Kampong Damrei	26
From District Office to C/S Office of Kanhchor	10
From District Office to C/S Office of Khsach Andaet	12
From District Office to C/S Office of Pongro	8
From District Office to C/S Office of Preaek Saman	7

SECTION B: DISTRICT PROFILE¹

¹ All data in this section come from the Commune Database (CDB) unless otherwise specified. These include primarily new CDB data, collected late 2008, and some data from earlier years. Please note that percentages are rounded to the nearest whole number.

1 General Information

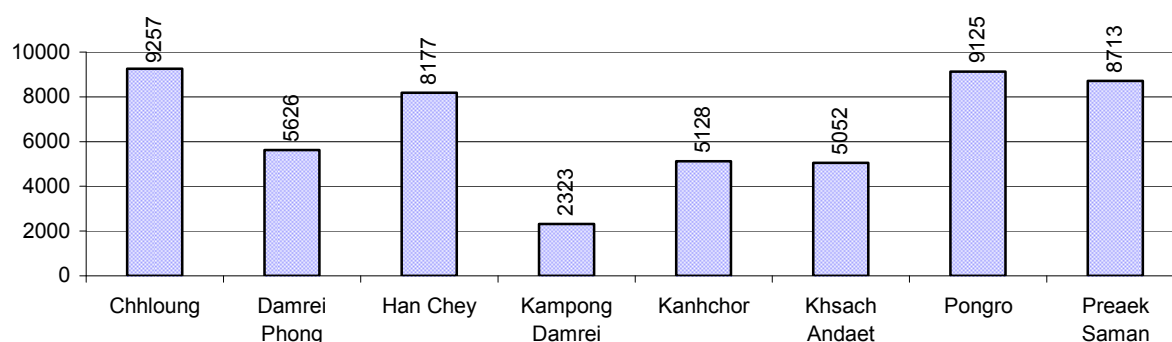
1.1 Population of the District

1.1.1 Total Population

Number of families	2005	2006	2007	2008
Total number of families	9,640 families	9,849 families	10,069 families	10,502 families
Increase (+)/Decrease (-) in nr of families		2%	2%	4%
Total population	49,279 pers	52,889 pers	52,088 pers	53,401 pers
Increase (+)/Decrease (-) in nr of people		7%	-2%	3%
Number of female Headed Households (HH)	1,283 families	1,308 families	1,355 families	1,414 families

Note: Percentages of population and increase/decrease are calculated on basis of the previous year. A negative sign in front of the percentage indicates a decrease in population.

1.1.2 Population, by Commune, in 2008



1.1.3 Population, by Age Group, over 3 years

Population by age group	2006	2007	2008	
	%	%	%	Number
Age 0-5 years (as percentage of the population)	14%	14%	14%	7,390 persons
Male 0-5 yrs	49%	49%	48%	3,568 persons
Female 0-5 yrs	51%	51%	52%	3,822 persons
Age 6-17 (as percentage of the population)	29%	29%	30%	16,135 persons
Male 6-17 yrs	50%	52%	49%	7,959 persons
Female 6-17 yrs	50%	48%	51%	8,176 persons
Age 18-60 (as percentage of the population)	49%	49%	48%	25,775 persons
Male 18-60 yrs	48%	48%	48%	12,447 persons
Female 18-60 yrs	52%	52%	52%	13,328 persons
Age 61 above (as percentage of the population)	8%	8%	8%	4,101 persons
Male 61	47%	46%	47%	1,939 persons
Female 61	53%	54%	53%	2,162 persons

Note: The overall percentage for each age group is calculated on the basis of the total population. The gender distribution of each group is calculated on the basis of the population within that particular age group.

1.2 Occupations

1.2.1 Percentage of families with a particular Occupation over 3 years

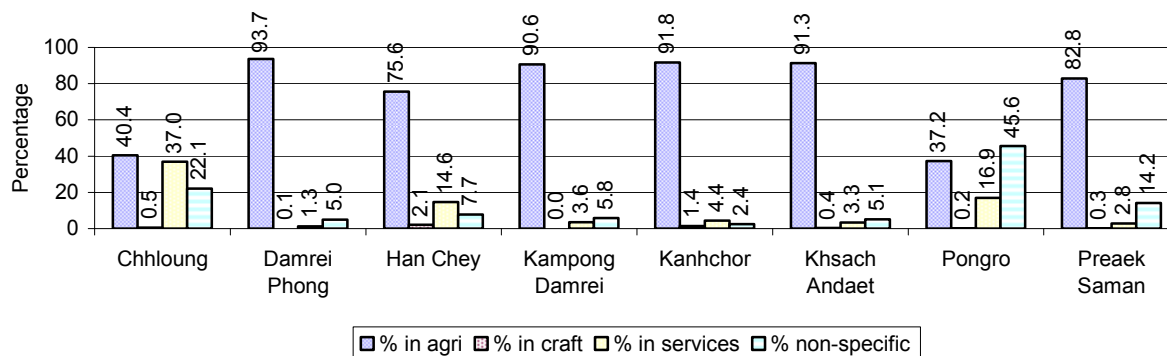
This table shows the percentage of the population who have a particular occupation (job), for example the percentage of the population in the district who are rice farmers, furniture crafter, trader, etc.

Description	2006	2007	2008	
	%	%	%	Number
Families whose main occupation is agriculture	70%	76%	72%	7,566 Families
Families whose primary occupation is rice farming	52%	59%	55%	5,821 Families
Families whose primary occupation is cultivating long-term crops	3%	2%	3%	334 Families
Families whose primary occupation is cultivating short-term crops	8%	8%	8%	842 Families
Families whose primary occupation is cultivating vegetable	1%	2%	1%	148 Families
Families whose primary occupation is fisherman	3%	3%	2%	247 Families
Families whose primary occupation is livestock farmer	2%	1%	1%	106 Families
Families whose primary occupation is NTFP collection	1%	2%	1%	68 Families
Families whose main occupation is craft work	1%	1%	1%	68 Families
Families, whose main occupation is in furniture craft, wooden, rattan, vine, bamboo	0%	0%	0%	19 Families
Families whose main occupation is in metal, aluminum, glass goods production	0%	0%	0%	6 Families
Families whose main occupation is food production	0%	0%	0%	35 Families
Families whose main occupation is tire, plastics and rubber goods production	0%	0%	0%	2 Families
Families whose main occupation is textile, clothing goods production	0%	0%	0%	0 Families
Families whose main occupation is in other production, not listed above	0%	0%	0%	6 Families
Families whose main occupation is services	6%	16%	12%	1,209 Families
Families whose main occupation is trade	2%	11%	7%	738 Families
Families whose main occupation is repair	1%	3%	3%	266 Families
Families whose main occupation is providing transport services	1%	2%	1%	147 Families
Families whose main occupation is providing other services	0%	0%	1%	58 Families
Families whose main occupation is not clear (or multi)	24%	7%	16%	1,659 Families

Note: The occupation percentages are calculated on the basis of the total number of families.

1.2.2 Percentage Families that work in one of four occupational sectors, by Commune in 2008

This table indicates the percentage of families involved in one of four occupation types: agriculture, craft, services or non-specific (other). Please note agriculture includes forestry activities such as cutting down trees and gathering gum from the trees.



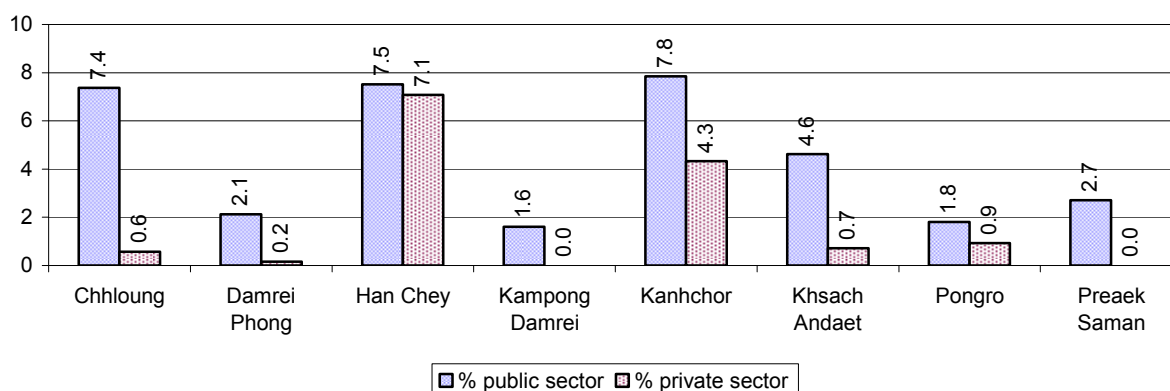
Note: Calculated on the basis of the total number of families within a commune.

1.2.3 Percentage of Families with public Sector, private Sector or uncertain Jobs, over 3 years

Description	2006	2007	2008	
	%	%	%	Number
Families that have a family member who is a government official, staff or worker	4%	4%	4%	470 families
Families that have a family member who is a private sector staff or worker	2%	3%	2%	188 families
Number of people aged 18-60 with uncertain/irregular jobs	6%	6%	3%	773 persons

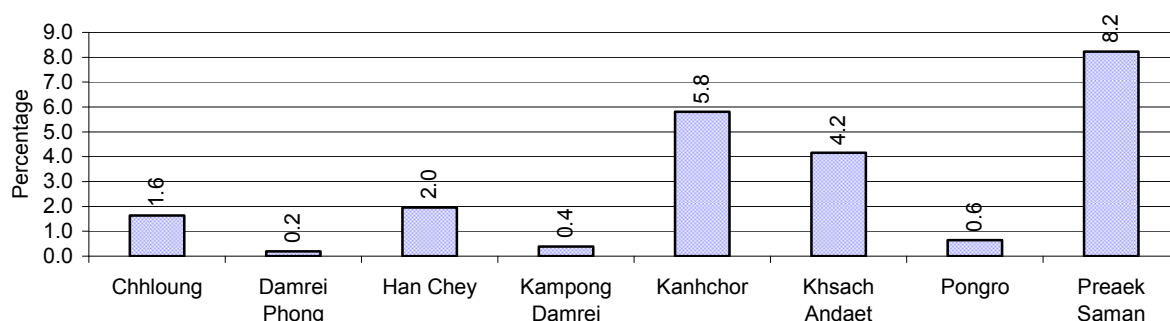
Note: In the first two rows percentages are calculated on the basis of the total number of families. In the third row the percentage is calculated on the basis of the total number of people aged 18-60 years.

1.2.4 Percentage of Families with public or private Sector Jobs, by Commune in 2008



Note: Calculated on the basis of the total number of families in the commune

1.2.5 Percentage of People aged 18-60 years with uncertain/irregular Jobs, by Commune, in 2008.



1.3 Property

1.3.1 Housing types and facilities over 3 years

This table shows the percentage of people living in a certain type of house. It also indicates how many houses have electricity or battery powered lights and how many have TV.

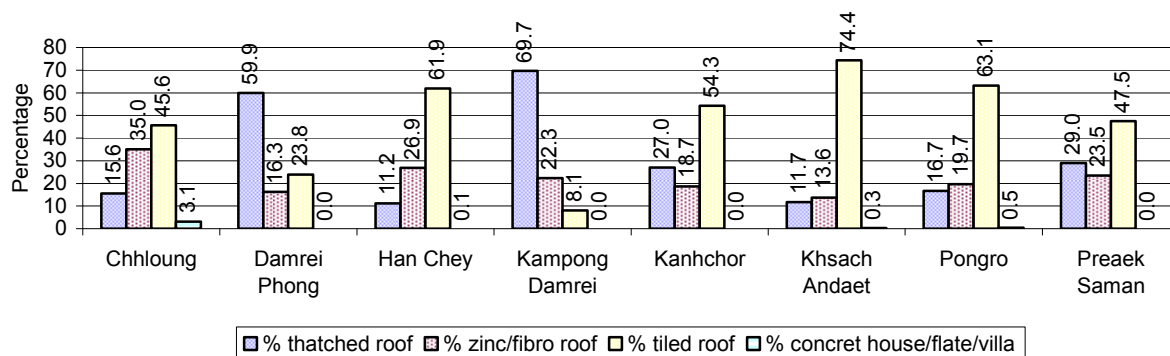
House Type	2006 %	2007 %	2008	
			%	Number
House with thatched roof	31 %	31 %	26 %	2,396 houses
House with zinc/fibro roof	19 %	20 %	22 %	2,054 houses
House with tiled roof	49 %	48 %	51 %	4,712 houses
Flats/apartments (with many families living)	0 %	0 %	0 %	0 houses
Concrete house or flat (with one family living)	1 %	1 %	1 %	55 houses
Villa house	0 %	0 %	0 %	3 houses
Houses with electricity	7 %	9 %	16 %	1,440 houses
Houses with battery light	63 %	64 %	66 %	6,102 houses
Houses with TV	43 %	47 %	55 %	5,116 houses

Note: Calculated against the total number of houses

1.3.2 Families living on public Land or without a permanent House

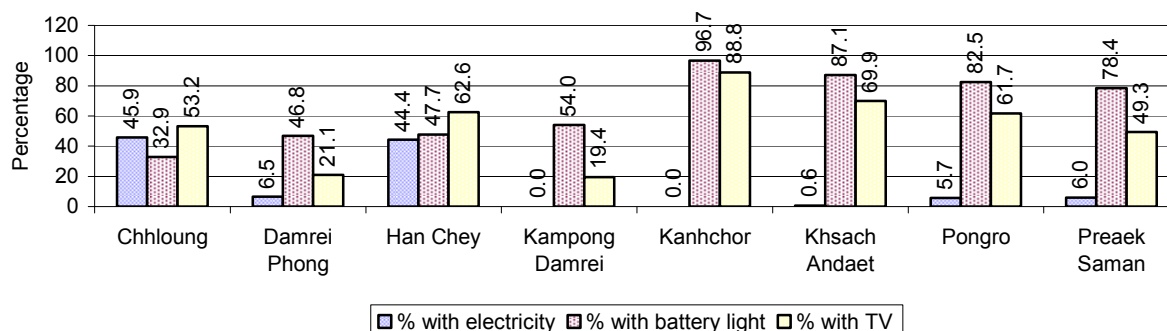
Living situation	2006	2007	2008
Families living in a house on public land	284 families	40 families	42 families
People, without permanent housing	19 person(s)	18 person(s)	15 person(s)

1.3.3 Percentage of Population living in a particular type of House, by Commune, in 2008



Note: Calculated against the total number of houses in each commune

1.3.4 Percentage of Houses with Electricity, Battery Lights and/or TVs, by Commune, in 2008



Note: Calculated against the total number of houses in each commune

1.3.5 Types of Vehicles and their ratio to Families across 3 years

This table shows the number of families per vehicle in the district. The last column shows the total number of each type of vehicle in the district for 2008.

Description	2006 ratio	2007 ratio	2008	
			Ratio	Number
Bicycle and bicycle with trailer	2	2	2	5,306
Ox-carts and horse-carts	4	4	4	2,460
Motorbike/with trailer	4	4	3	3,485
Motor tri-cycle	N/A	3,356	3,501	3
Large Transportation				
Total number of cars/trucks	40	38	33	323
Locally made vehicles	128	106	90	117
Trucks for goods transport	109	129	109	96
Buses/mini buses for passengers	328	272	239	44
Family cars	189	180	159	66
Agriculture machinery				
Tractors used for plowing	448	420	477	22
Power-tillage used for plowing	126	106	84	125
Other type of machinery				
Other type of machinery	657	530	1,167	9
Water transportation				
Row boats	8	9	8	1,283
Total number of motor boats				
Motor boats used for fishing	22	23	26	410
Motor boats used for passengers	25	27	29	359
Motor boats used for goods transporting	1,231	1,259	1,167	9
Motor boats used for goods transporting	170	197	250	42

Note: Ratio of families to a particular type of vehicle is the result of the total number of families divided by total number of that type of vehicle. Other types of vehicles, such as bulldozer, excavator, rollers etc. are not listed.

2 Infrastructure and Economy

2.1 Roads in meters over 3 years

Description	2006	2007	2008
Bituminous road	0 m	5,700 m	0 m
DBST, Macadam road	13,000 m	13,000 m	18,600 m
Concrete road	0 m	0 m	0 m
Laterite road	32,500 m	38,125 m	15,700 m
Constructed earth road	9,200 m	12,446 m	5,214 m
Un-constructed earth road	40,650 m	24,500 m	15,060 m

2.2 Sewerage Pipes in meters over 3 years

Description	Sewage pipe length		
	2006	2007	2008
Total length of sewage pipe, diameter 30-50 cm	0 m	40 m	0 m
Length of newly constructed sewage pipe, diameter 30-50 cm	5 m	0 m	0 m
Length of sewage pipe, diameter 30-50 cm needs repair/rehabilitation	0 m	0 m	0 m
Total length of sewage pipe, diameter of pipe 60-100 cm	80 m	125 m	0 m
Length of newly constructed sewage pipe, diameter 60-100 cm	130 m	117 m	0 m
Length of sewage pipe, diameter 60-100 cm needs repair/rehabilitation	0 m	0 m	0 m
Sewage pipe, diameter of pipe over 100 cm	45 m	12 m	0 m
Length of newly constructed sewage pipe, diameter over 100 cm	30 m	20 m	0 m
Length of sewage pipe, diameter over 100 cm needs repair/rehabilitation	0 m	0 m	0 m

2.3 Drainage and Bridges

Construction Type	2006		2007		2008	
	place(s)	Length	place(s)	Length	place(s)	Length
Single pipe culvert	122	110m	86	186 m	83	144 m
Double-pipe culvert	5	18m	1	6 m	3	18 m
Box pipe culvert	1	6m	4	36m	0	0 m
Wooden bridge	12	114m	10	112m	6	73 m
Concrete bridge	1	12m	6	0m	0	0 m
Bale bridge	6	361m	5	241m	5	241 m
Spillway construction	0	0m	0	0m	0	0 m

2.4 Services in the District

Descriptions	Number of places by year		
	2006	2007	2008
Public			
Electricity generating stations	2	4	2
Health clinics	0	0	5
Private			
Bicycle and motorcycle repair places	60	57	49
Agricultural machinery, tools and equipment repair places	17	11	17
Electronic tool repair places	8	10	18
Battery-charging services	42	46	42
Handicraft places, wooden furniture and forest by-products	31	37	20
Other handicraft places (excluding furniture)	15	4	7
Small-scale services (hairstylist, phone service, massage,	67	73	91

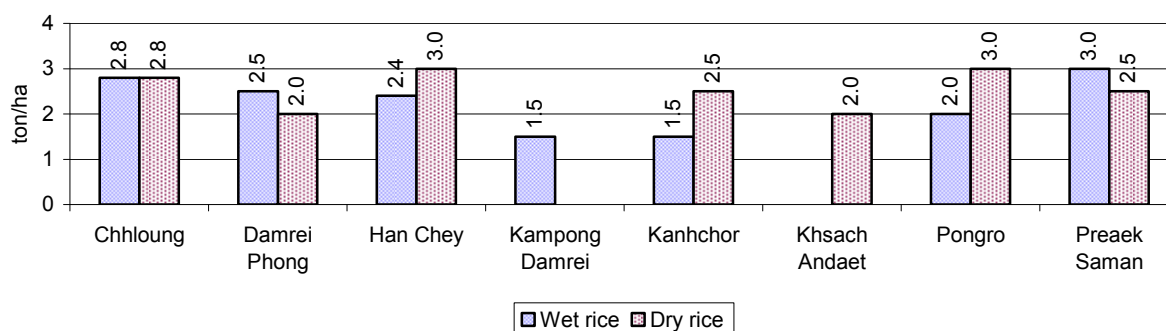
Descriptions	Number of places by year		
	2006	2007	2008
Karaoke, etc)			
Small-scale food shop businesses (Food, groceries, drink shop, etc)	23	33	104
Small-scale rice mills	150	192	201
Medium or large-scale rice mills	0	0	0
Small-scale markets	6	4	13
Large-scale market	0	0	0
Alcohol refinery places	62	85	83
Pharmacies and small drug stores	14	10	9
Hotels	0	0	0
Guest houses	2	3	7
Restaurants	0	2	2
Gasoline stations	0	0	0

2.5 Agriculture

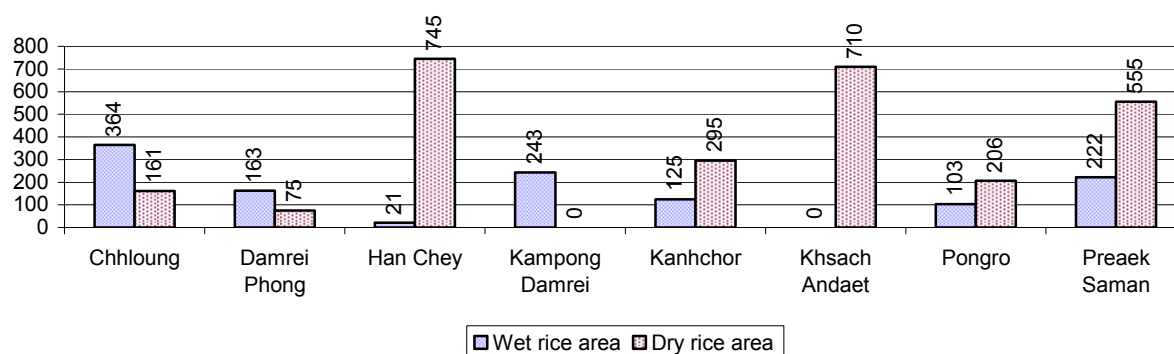
2.5.1 Rice cultivation in the District over 3 years

Description	2006	2007	2008
Total dry rice land area	3,013 ha	3,185 ha	4,247 ha
Actual dry rice cultivation area	2,899 ha	2,897 ha	2,747 ha
% actual cultivation to total land	96%	91%	65%
Total dry rice production	7,138 tonne(s)	7,009 tonne(s)	6,985 tonne(s)
Average dry rice yield	2.5 tonne(s)/ha	2.4 tonne(s)/ha	2.5 tonne(s)/ha
Total wet rice land area	1,433 ha	1,435 ha	1,622 ha
Actual wet rice cultivation area	1,325 ha	1,332 ha	1,241 ha
% actual cultivation to total land	92 %	93%	77%
Total wet rice production	2,877.14 tonne(s)	3,101.66 tonne(s)	2,783.39 tonne(s)
Average wet rice yield	2.2 tonne(s)/ha	2.3 tonne(s)/ha	2.2 tonne(s)/ha
Total intensive rice land area	0 ha	0 ha	16 ha
Actual intensive rice cultivation area	- ha	- ha	- ha
Average intensive rice yield	- tonne(s)/ha	- tonne(s)/ha	- tonne(s)/ha
Actual upland rice cultivation area	297 ha	20 ha	53 ha
Total upland rice production	416 tonne(s)	14 tonne(s)	66 tonne(s)
Average upland rice yield	1.4 tonne(s)/ha	0.7 tonne(s)/ha	1.3 tonne(s)/ha

2.5.2 Estimated wet and dry Season Rice Yield in tonne(s)/Ha, by Commune, in 2008



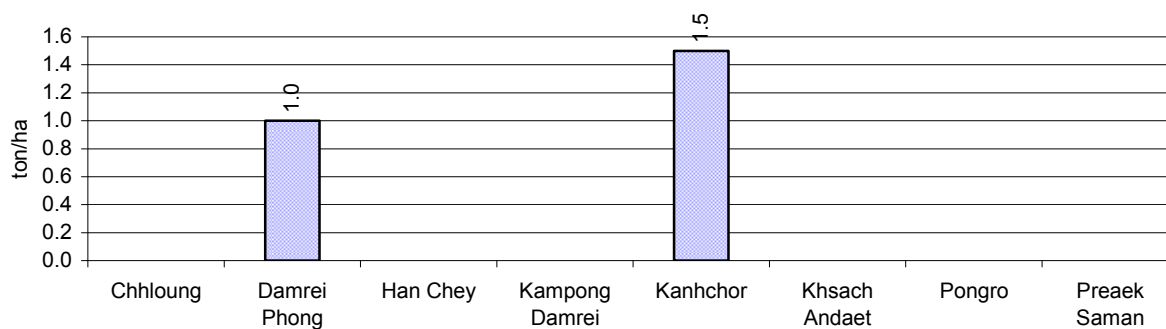
2.5.3 Cultivated wet and dry Season Rice areas in Ha, by Commune, in 2008



2.5.4 Estimated intensive Rice Yields in tonnes/Ha, by Commune, for 2008

There were no estimated intensive rice yields in this District in 2008

2.5.5 Estimated upland Rice Yield in tonnes/Ha, by Commune, for 2008

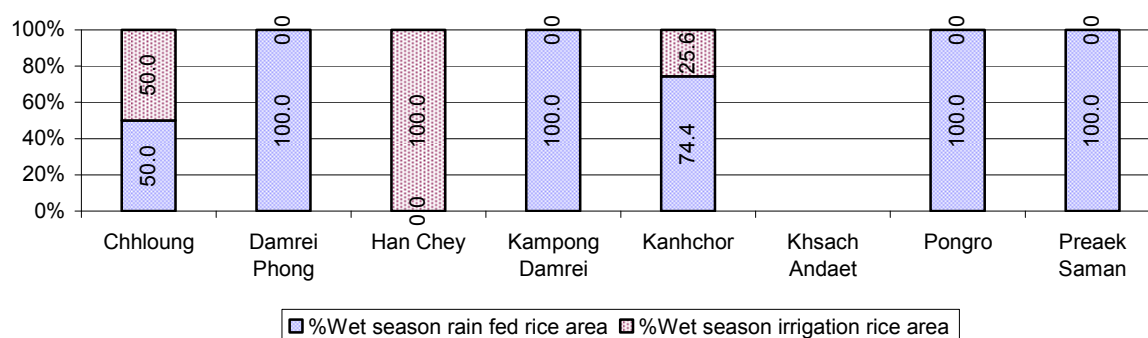


2.5.6 Wet season Rice irrigation across 3 years

Description		2006	2007	2008	
		%	%	%	Number
Total area of wet season rain fed rice land		46%	61%	81 %	1,006 ha
Percentage of wet season rice land that is irrigated; and for 2008 area in Ha		54 %	39 %	19 %	235 ha
Where	Area irrigated from canal/dam	30 %	27 %	36 %	85 ha
	Area irrigated from river, stream, lake, natural pond	53 %	57 %	28 %	66 ha
	Area irrigated from drilled well	0 %	0 %	36 %	84 ha
	Area irrigated from dug pond	17 %	16 %	0 %	0 ha

2.5.7 Water sources for wet Season Rice Cultivation, by Commune, in 2008

This chart shows the percentage of wet season rice cultivation receiving water from rain (natural) and from irrigation.



2.5.8 Access to Irrigation

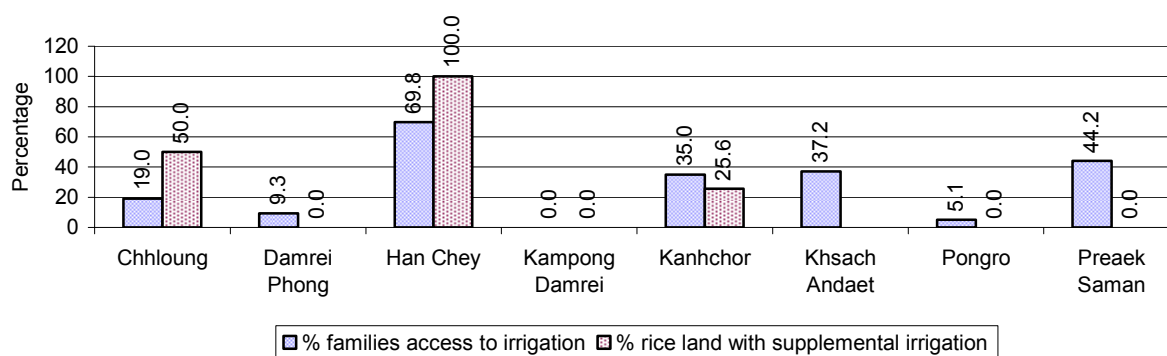
Description	2006 %	2007 %	2008	
			%	Number
Families who have access to irrigation water	39%	30%	33%	1,896 families
Families who have irrigation wells	1%	1%	1%	72 families

Note: Calculated against the total number of families are rice farmers

2.5.9 Number of Irrigation Wells over 3 years

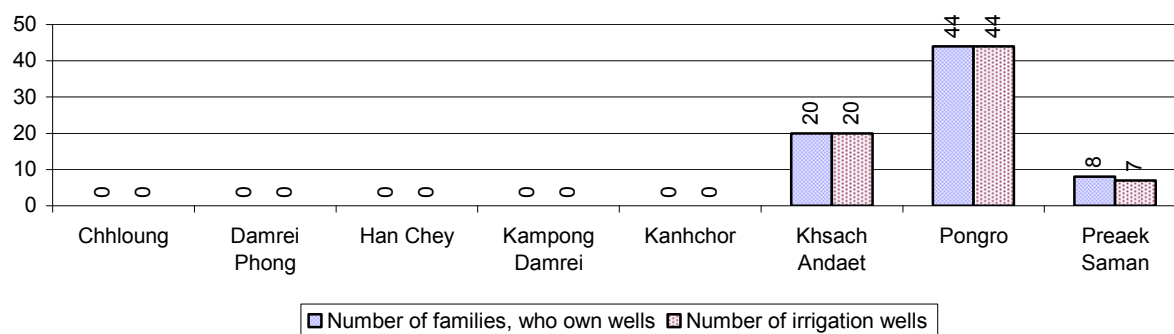
Description	2006	2007	2008
Number of irrigation wells	64 wells	66 wells	71 wells

2.5.10 Percentage of Families with access to (supplemental) Irrigation for wet Season Rice cultivation, by Commune, in 2008



Note: % of families, with access to irrigation is calculated against the total number of families, whose main occupation is rice farming. Irrigated wet rice land area is calculated against the total actual wet rice land cultivated areas

2.5.11 Irrigation Wells, by Commune, in 2008

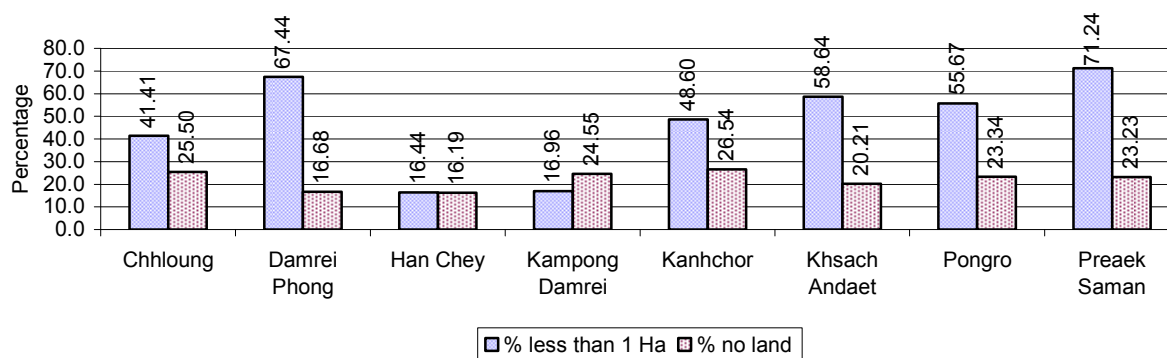


2.5.12 Farmers owning less than one hectare of Rice Land

Description	2006 %	2007 %	2008	
			%	Number
Families who have less than one hectare of rice land	50%	52%	53%	3,065 families
Families who do not own any rice land	27%	19%	21%	1,235 families

Note: Calculated on basis of total number of families who are rice farming

2.5.13 Percentage of Farmers with less than one Hectare or no Rice Land, by Commune, in 2008

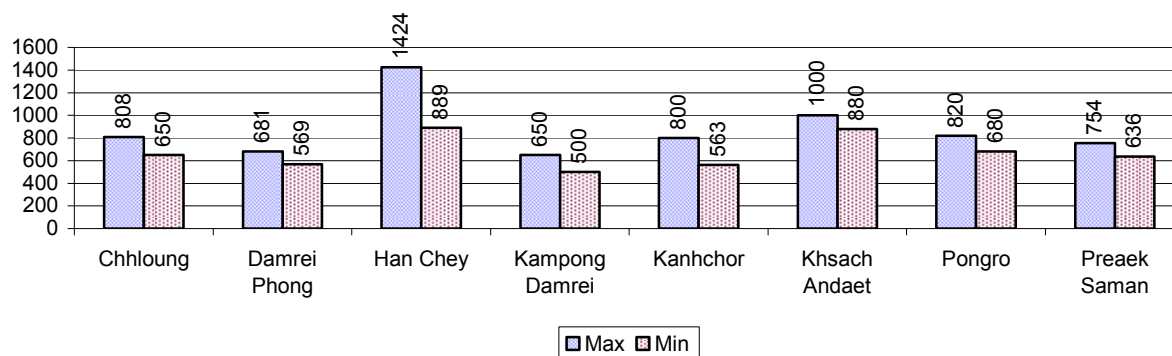


Note: Calculated on basis of total number of families who are rice farming

2.5.14 Average farm-gate Prices of Rice, over 3 years

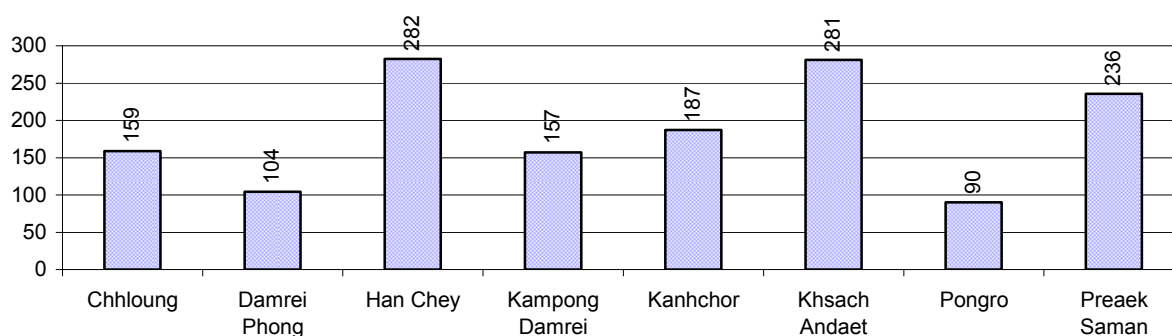
Description	2006	2007	2008
Maximum average farm gate price	611 Riels/Kg	810 Riels/Kg	867 Riels/Kg
Minimum average farm gate price	477 Riels/Kg	638 Riels/Kg	671 Riels/Kg
Average farm gate price	544 Riels/Kg	724 Riels/Kg	769 Riels/Kg
Average rice production per person	197 Kg/person	194 Kg/person	185 Kg/person

2.5.15 Minimum and maximum farm-gate Prices of Rice in Riel/kg, by Commune, in 2008



2.5.16 Production of Paddy in Kgs/Person, by Commune, in 2008

This table shows how much paddy (harvested rice) is produced in a year in a commune, in kgs per person.

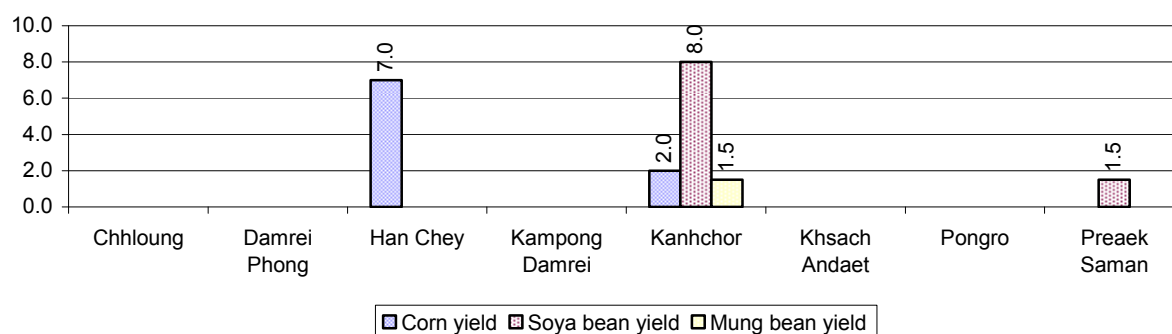


2.5.17 Production of other Crops, over 3 years

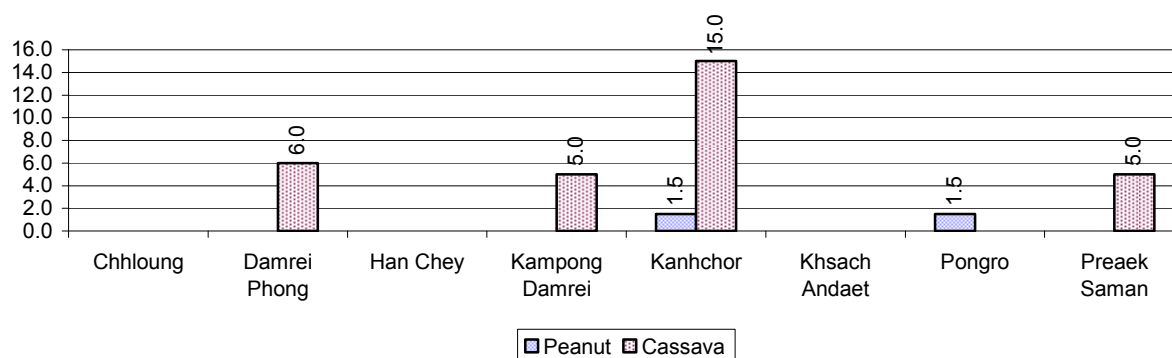
Crops	2006	2007	2008
Corn cultivation area	45 ha	98 ha	110 ha
Estimated corn yield	4.5 tonne(s)/ha	3.5 tonne(s)/ha	4.5 tonne(s)/ha
Estimated corn production	203 tonne(s)	343 tonne(s)	493 tonne(s)
Soya bean cultivation area	107 ha	120 ha	238 ha
Estimated Soya bean yield	2.5 tonne(s)/ha	2.0 tonne(s)/ha	4.8 tonne(s)/ha
Estimated Soya bean production	268 tonne(s)	240 tonne(s)	1,131 tonne(s)
Mungbean cultivation area	2 ha	2 ha	4 ha
Estimated Mungbean yield	1.5 tonne(s)/ha	1.5 tonne(s)/ha	1.5 tonne(s)/ha
Estimated Mungbean production	3 tonne(s)	3 tonne(s)	6 tonne(s)
Peanut cultivation area	13 ha	15 ha	19 ha
Estimated Peanut yield	1.5 tonne(s)/ha	1.5 tonne(s)/ha	1.5 tonne(s)/ha
Estimated Peanut production	20 tonne(s)	23 tonne(s)	29 tonne(s)
Cassava cultivation area	164 ha	141 ha	877 ha
Estimated Cassava yield	7.5 tonne(s)/ha	3.3 tonne(s)/ha	7.8 tonne(s)/ha
Estimated Cassava production	1,230 tonne(s)	458 tonne(s)	6,797 tonne(s)
Sweet potatoes cultivation area	25 ha	55 ha	51 ha
Estimated Sweet potatoes yield	5.7 tonne(s)/ha	7.6 tonne(s)/ha	5.7 tonne(s)/ha
Estimated Sweet potatoes	143 tonne(s)	415 tonne(s)	289 tonne(s)

Crops	2006	2007	2008
production			
Sesame cultivation area	385 ha	338 ha	241 ha
Estimated Sesame yield	0.6 tonne(s)/ha	0.6 tonne(s)/ha	0.6 tonne(s)/ha
Estimated Sesame production	246 tonne(s)	210 tonne(s)	149 tonne(s)

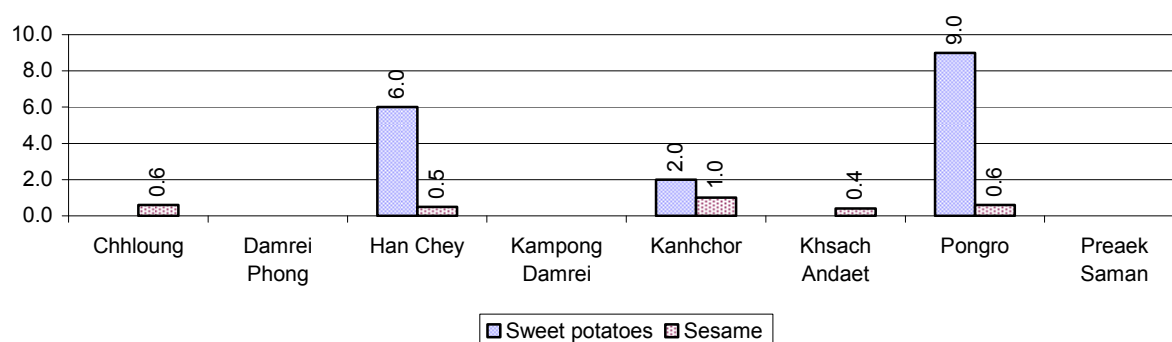
2.5.18 Yields of Corn, Soya beans and Mungbeans in tonne(s)/ha, by Commune, in 2008



2.5.19 Yields of Peanuts and Cassava in tonne(s)/ha by Commune, in 2008



2.5.20 Yields of Sweet Potatoes and Sesame in tonne(s)/ha, by Commune, in 2008



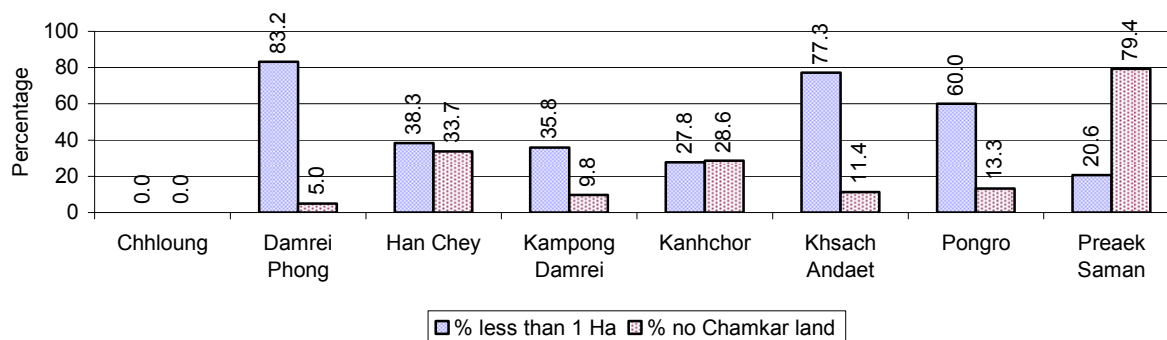
2.5.21 Percentage Farmers who own less than 1 Ha or no Chamkar land

Description	2006 %	2007 %	2008	
			%	Number
Families, who own less than 1ha of Chamkar land	38%	32%	42%	553 families
Families, with no Chamkar land	35%	24%	30%	398 families

Note 1: Calculated as a percentage of the total number of families whose main occupation is Chamkar (not rice) farming

Note 2: Chamkar land is no-rice land, i.e. other crops

2.5.22 Percentage Farmers owning less than 1 ha or no Chamkar land, by Commune, in 2008



Note: Percentage is calculated among families, who Chamkar farm as a main occupation, not the total population of the commune.

2.5.23 Percentage of Families raising Cattle/Buffalo, over 3 years

Description	2006 %	2007 %	2008	
			%	Number
Families raising cattle/buffalo	44%	44%	43%	4,548 families
Families raising cattle/buffalo as labor forces	30%	28%	30%	3,182 families

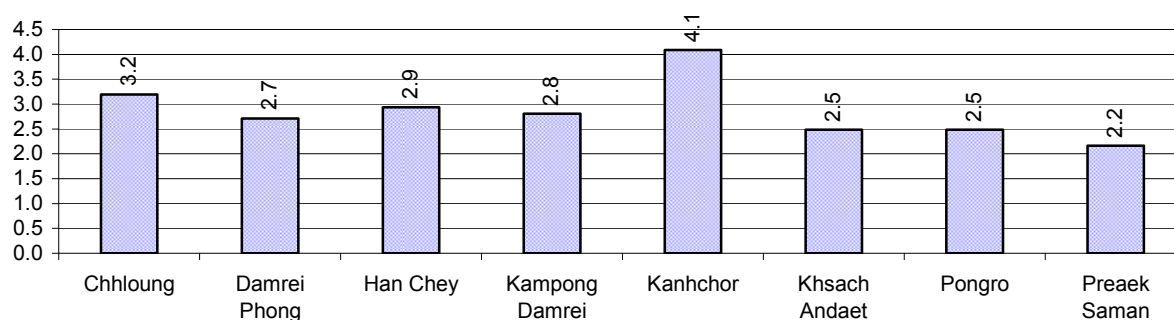
Note: Calculated against the total number of families.

2.5.24 Number of Cattle/buffalo being raised, over 3 years

Description	2006	2007	2008
Total number of cattle/buffalo	12,305 head(s)	12,208 head(s)	12,767 head(s)
Average cattle/buffalo per families	2.9 head(s)/families	2.8 head(s)/families	3 head(s)/families

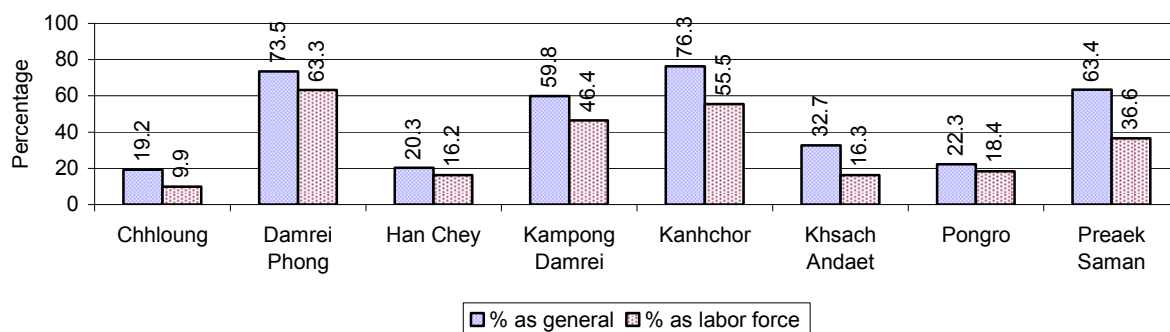
Note: Calculated by dividing total number of cattle/buffalo by total number of cattle/buffalo raising families

2.5.25 Average number of Cattle/Buffalo per Family, by Commune, in 2008



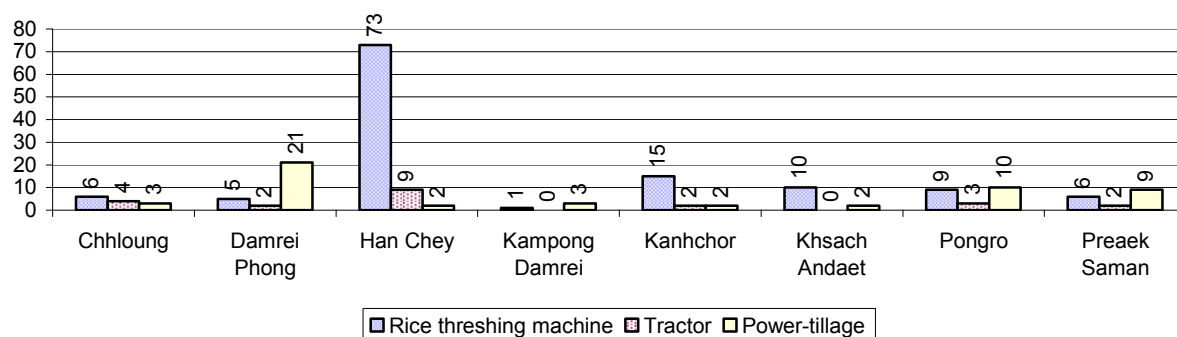
Note: Calculated by dividing total number of cattle/buffalo by total number of cattle/buffalo raising families

2.5.26 Percentage Families raising Cattle/Buffalo, for general and labor purposes in 2008, by Commune



Note: Calculated using the total number of families raising cattle/buffalo against the total number of families.

2.5.27 Type and number of agricultural Machines, by Commune, in 2008

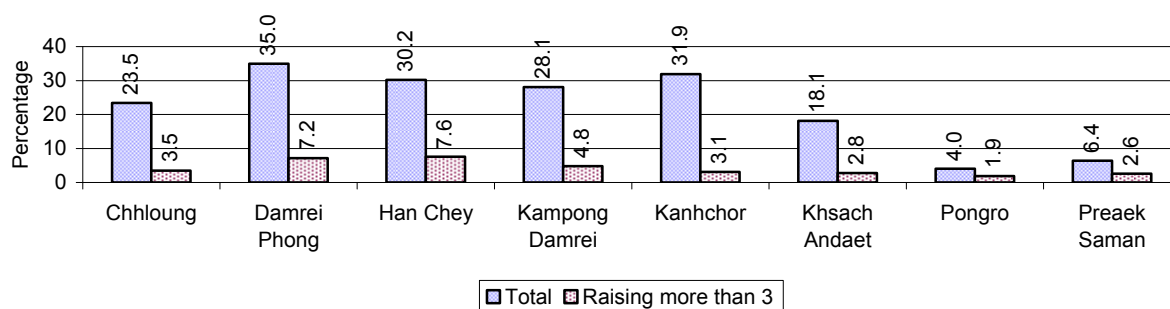


2.5.28 Livestock-producing Households over 3 years

Description	2006 %	2007 %	2008	
			%	Number
Total number of families raising pigs	29%	22%	20%	2,102 families
number of families raising more than 3 pigs	5%	4%	4%	427 families
Total number of families raising chickens	74%	75%	77%	8,056 families
number of families raising more than 3 chickens	62%	57%	66%	6,888 families
Total number of families raising ducks	15%	13%	13%	1,350 families
number of families raising more than 5 ducks	11%	10%	10%	1,059 families
Total number of families raising goats or sheep	0%	0%	0%	16 families
Total number of families raising horses	1%	1%	1%	59 families

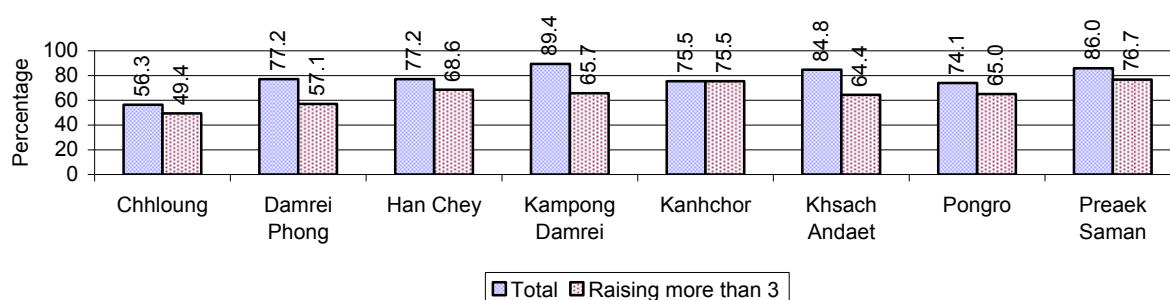
Note: Calculated against the total number of families

2.5.29 Percentage Families raising Pigs, by Commune, in 2008



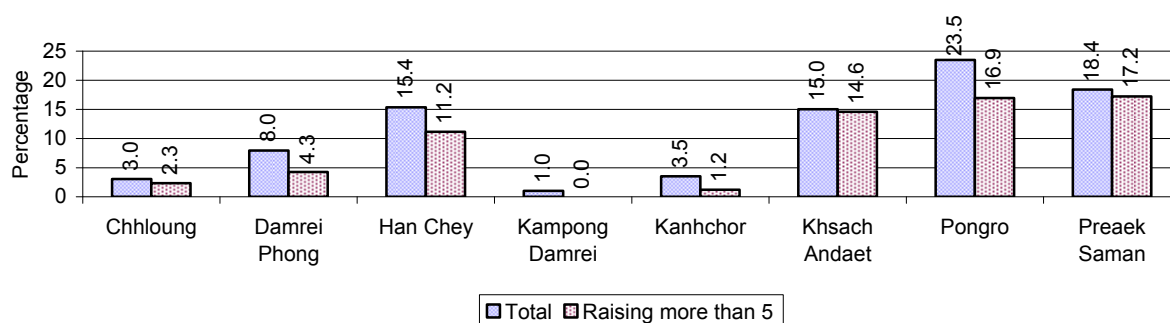
Note: Calculated against the total number of families in the commune

2.5.30 Percentage Families raising Chickens, by Commune, in 2008



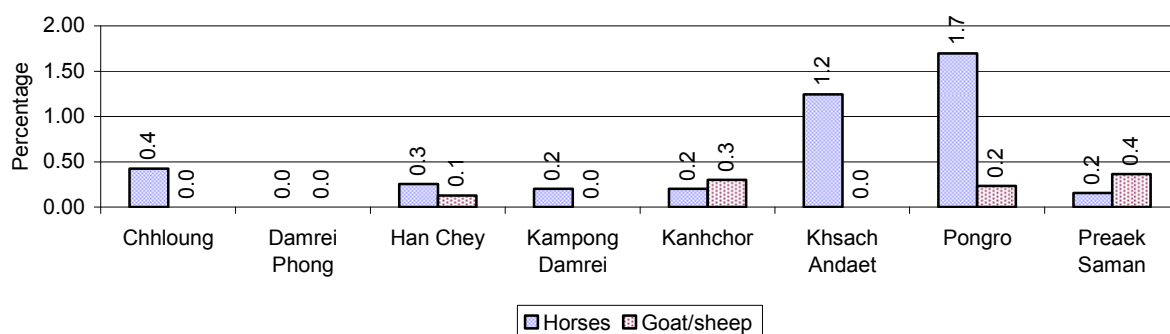
Note: Calculated against the total number of families in the commune

2.5.31 Percentage Families raising Ducks, by Commune, in 2008



Note: Calculated against the total number of families in the commune

2.5.32 Percentage Families raising Horses, Goats or Sheep, by Commune, in 2008

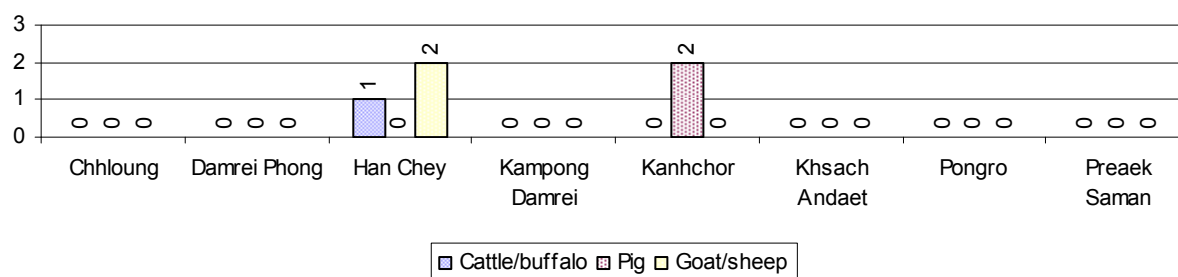


Note: Calculated against the total number of families in the commune

2.5.33 Livestock Farms over 3 years

Description	2006	2007	2008
Number of cattle/buffalo farms	5 farm(s)	1 farm(s)	1 farm(s)
Number of pig farms	22 farm(s)	0 farm(s)	2 farm(s)
Number of goat/sheep farms	3 farm(s)	0 farm(s)	2 farm(s)
Number of chicken farms	0 farm(s)	0 farm(s)	0 farm(s)
Number of duck farms	0 farm(s)	0 farm(s)	0 farm(s)

2.5.34 Number Livestock Farms, by Commune in 2008



Note: Number of farms are recorded by the village chief, not by counting number of livestock in each farm

2.5.35 Number Chicken and Duck Farms, by Commune, for 2008

There were no farms of this type in this District in 2008

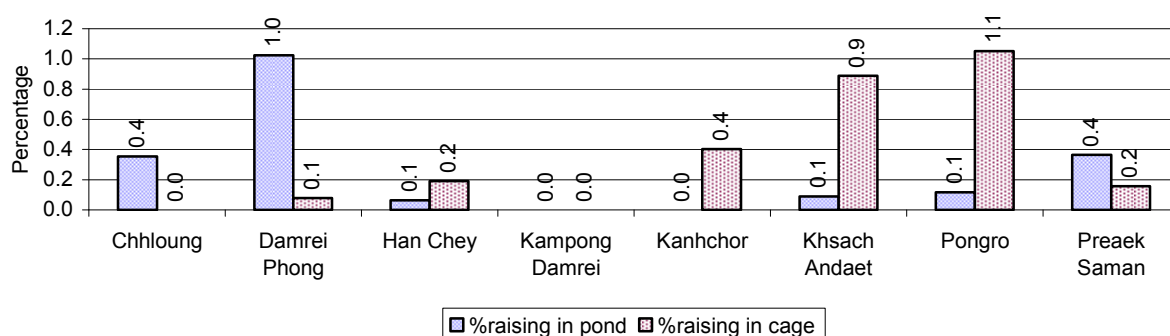
Note: Number of farm places recorded by village chief, not by counting number of livestock in each farm

2.5.36 Families raising Fish over 3 years

Description	2006	2007	2008
Total number of families raising fish	60 families	83 families	68 families
% families raising fish	1%	1%	1%
Number families raising fish in pond	17 families	28 families	29 families
% families raising fish in pond	0%	0 %	0%
Number fish pond	29 pond(s)	34 pond(s)	34 pond(s)
No. of ponds per family	1.7 pond/families	1.2 pond/families	1.2 pond/families
Number of families raising fish in cage	43 families	55 families	39 families
%families raising fish in cage	0 %	1 %	0%
Number of fish cage	47 cage(s)	59 cage(s)	43 cage(s)
No. of fish cage per family	1.1 cage /families	1.1 cage /families	1.1 cage /families

Note: % of families raising fish or fish in ponds or cages is calculated a percentage of the total number of families.

2.5.37 Percentage of Families raising Fish, by Commune, in 2008



Note: Calculated as a percentage of the total number of families in the commune.

2.5.38 Shrimp and Prawn Farming over 3 years

Description	2006	2007	2008
Number of families raising shrimps	0 families	0 families	0 families
% Families raising shrimps	0%	0%	0%
Number of shrimp ponds	0 pond	0 pond	0 pond
Total area raising shrimps	0 ha	0 ha	0 ha
Area per family	-ha/families	-ha/families	-ha/families
Number of families raising prawns	0 families	0 families	0 families
% families raising prawns	0%	0%	0%
Number prawn ponds	0 pond	0 pond	0 pond
Ponds per families	- pond/families	-pond/families	-pond/families
Number of prawn cages	0 cage	0 cage	0 cage
Cages per families	0 cage /families	0 cage /families	0 cage /families

Note: Percentage of families raising either prawns or shrimp is calculated against the number of families, who do aquaculture farming, NOT the total population.

2.5.39 Numbers of Families raising Shrimps and number of Shrimp Ponds, by Commune, in 2008

There were none of these in this District in 2008

2.5.40 Number of Families raising Prawn and Number of Prawn Ponds/Cages, by Commune, in 2008

There were none of these in this District in 2008

3 Social Aspects**3.1 Education****3.1.1 Kindergarten in the District over 3 years**

Description	2006	2007	2008
Number of community kindergarten schools	0 school(s)	0 school(s)	0 school(s)
Number of community kindergarten class rooms	0 room(s)	0 room(s)	0 room(s)
Number of community kindergarten classes	0 class(es)	0 class(es)	0 class(es)
Number of community kindergarten teachers	0 person(s)	0 person(s)	0 person(s)
Number of women community kindergarten teachers	0 women	0 women	0 women
Number of state and private kindergarten schools	3 school(s)	3 school(s)	3 school(s)
Number of state and private kindergarten class rooms	6 room(s)	27 room(s)	5 room(s)
Number of state and private kindergarten classes	6 class(es)	6 class(es)	6 class(es)
Number of state and private kindergarten teachers	9 person(s)	8 person(s)	9 person(s)
Number of women state and private kindergarten teachers	9 women	8 women	9 women

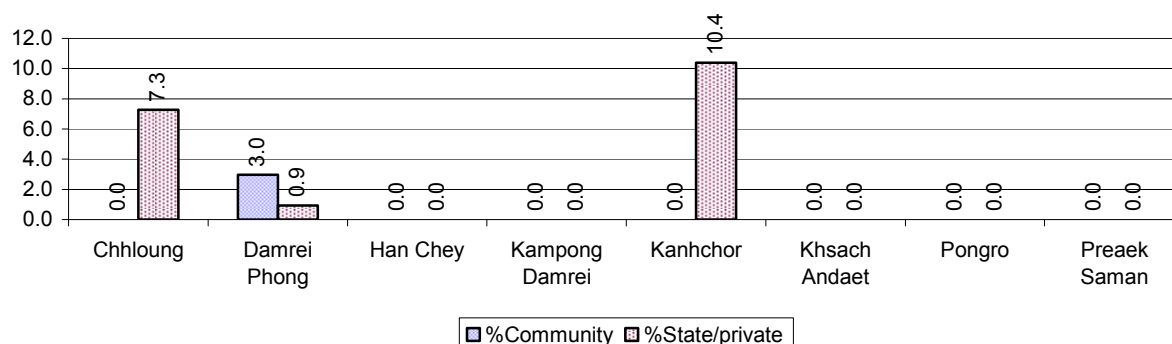
3.1.2 Percentage enrolment at Kindergarten level over 3 years

This table shows the percentage of the total 3-5 year old population attending kindergarten.

Description	2006 %	2007 %	2008	
			%	Number
Total percentage of children, 3-5 yrs, go to kindergarten	6%	3%	3%	131 person(s)
Percentage of children, 3-5 yrs, go community kindergarten	5%	0%	0%	16 person(s)
Percentage children, 3-5 yrs, go state/private kindergarten	1%	2%	2%	115 person(s)

Note: Calculated against the total for that age group

3.1.3 Percentage of Children 3-5 yrs attending Kindergarten, by Commune, in 2008



3.1.4 Basic Education over 3 years

Primary School

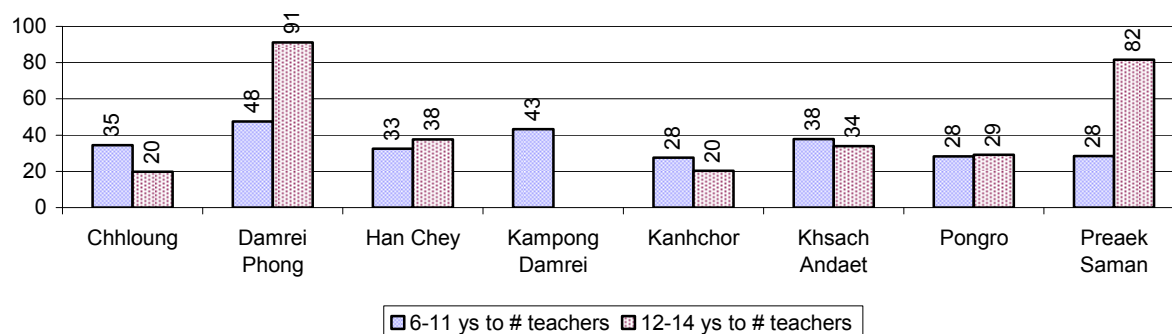
Description	2006	2007	2008
Number of primary schools	38 school(s)	33 school(s)	35 school(s)
Number of primary school rooms	185 room(s)	192 room(s)	196 room(s)
Number of primary classes	266 class(es)	252 class(es)	230 class(es)
Number of primary teachers	284 person(s)	281 person(s)	256 person(s)
Ratio of children 6-11 yrs to school	201	233	239
Ratio of children 6-11 yrs to school room	41	40	43
Ratio of children 6-11 yrs to class	29	31	36
Ratio of children 6-11 yrs to teacher	27	27	33

Note: According to education norm, children 6-11 yrs should attend primary school, while 12-14 yrs should be in lower secondary school, but in reality this varies.

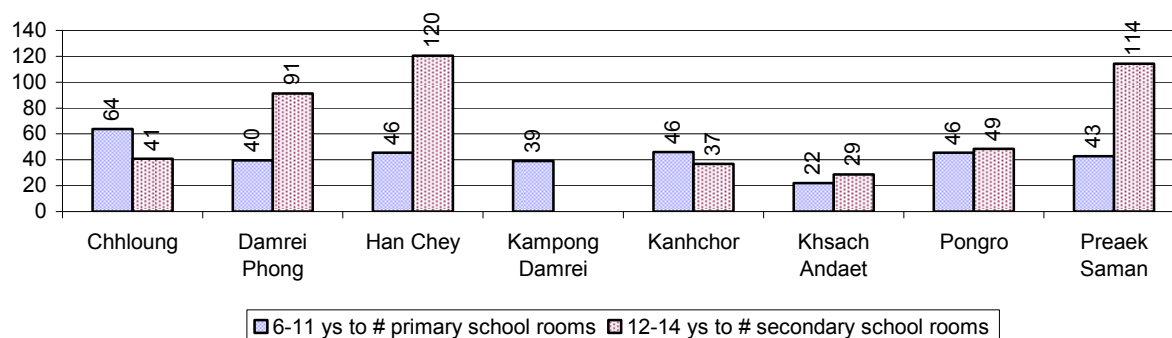
Lower Secondary School

Description	2006	2007	2008
Number of lower secondary schools	7 school(s)	7 school(s)	7 school(s)
Number of lower secondary school rooms	56 room(s)	60 room(s)	69 room(s)
Number of lower secondary classes	41 class(es)	55 class(es)	68 class(es)
Number of lower secondary teachers	110 person(s)	122 person(s)	116 person(s)
Ratio children 12-14 yrs to school	574	547	557
Ratio of children 12-14 yrs to school room	72	64	57
Ratio of children 12-14 yrs to class	98	70	57
Ratio of children 12-14 yrs to teacher	37	31	34

3.1.5 Ratio of 6-11 year old and 12-14 year old Children to number of Teachers, by Commune, in 2008



3.1.6 Ratio of 6-11 year old and 12-14 year old Children to number of School Rooms, by Commune, in 2008



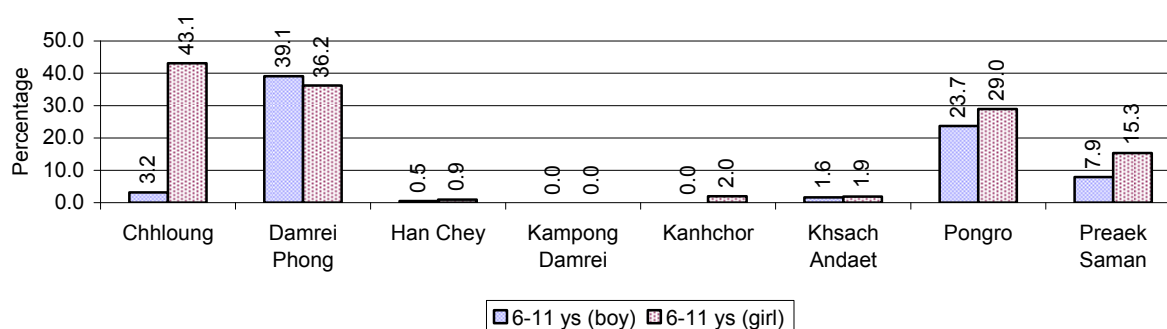
3.1.7 Enrolment status at Primary Level over 3 years

Description	2006 %	2007 %	2008	
			%	Number
Total children aged 6-11 years old	14%	15%	16%	8,373 person(s)
Total children aged 6-11 who are in school	86%	92%	84%	7,069 person(s)
Total children aged 6-11 who are not in school	14%	8%	16%	1,304 person(s)
Total girls aged 6-11 years old	14%	13%	16%	4,282 person(s)
Total girls aged 6-11 who are in school	85%	91%	79%	3,403 person(s)
Total girls aged 6-11 who are not in school	15%	9%	21%	879 person(s)
Total boys aged 6-11 years old	15%	16%	16%	4,091 person(s)
Total boys aged 6-11 who are in school	86%	92%	90%	3,666 person(s)
Total boys aged 6-11 who are not in school	14%	8%	10%	425 person(s)

Note 1: Percentage is calculated on the basis of the total number of children within 6-11 year age group for the first 3 rows and for the total girls and the total boys aged 6-11 yrs.

Note 2: Number of girls aged 6-11 who are in & not in school is calculated against the total number of girls aged 6-11 yrs. Number boys, 6-11 yrs who are in & not in school are calculated against the total number of boys aged 6-11 yrs.

3.1.8 Percentage of 6-11 year old Children not in School, by Commune, in 2008



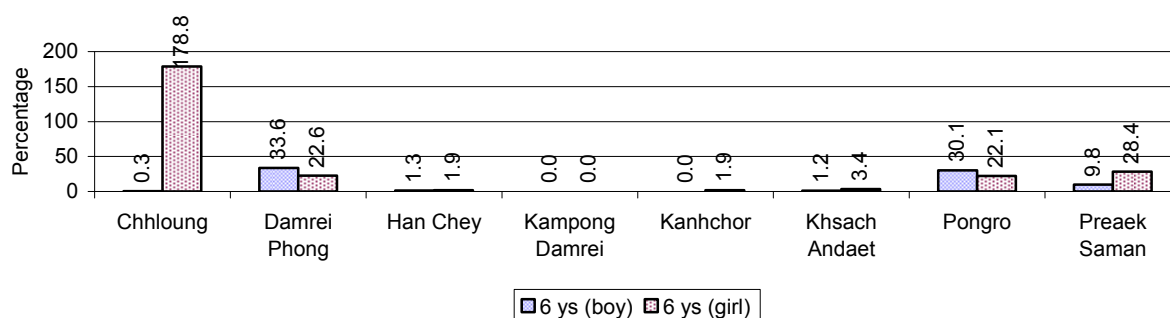
Note: calculated on the basis of the total number of children within 6-11 year age group in the commune.

3.1.9 Enrolment of 6 year old Children over 3 years

Description	2006 %	2007 %	2008	
			%	Number
Total % and number of children aged 6 years old	4%	4%	5%	2,860 person(s)
Total % of children aged 6 years old in school	84%	92%	77%	2,194 person(s)
Total % of children aged 6 years old not in school	16%	8%	23%	666 person(s)

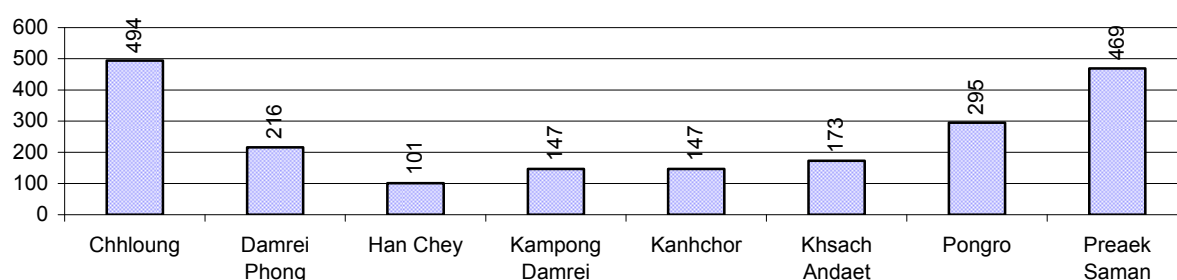
Note: First row calculated as a percentage of total population. Second and third row calculated as a percentage of the total number of 6 year olds.

3.1.10 Percentage of 6 year old Children not in School, by Commune, in 2008



Note: Calculated as a percentage of total 6 year old population

3.1.11 Number of 5 year old Children in each Commune in 2008

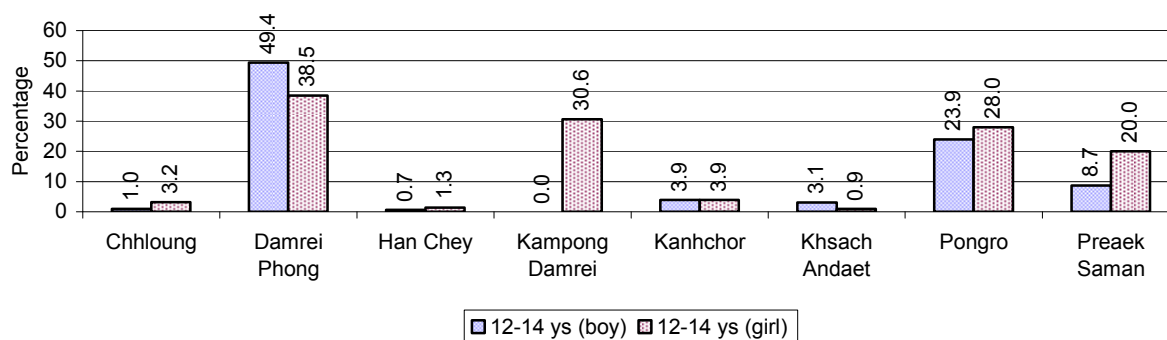


3.1.12 Enrolment at Lower Secondary Level over 3 years

Description	2006 %	2007 %	2008	
			%	Number
Total children aged 12-14 years old	8%	7%	7%	3,899 person(s)
Children aged 12-14 years old in school	77%	89%	87%	3,394 person(s)
Children aged 12-14 years old not in school	23%	11%	13%	505 person(s)
Total girls aged 12-14 years old	7%	7%	7%	1,901 person(s)
Girls aged 12-14 years old in school	75%	87%	86%	1,631 person(s)
Girls aged 12-14 years old not in school	25%	13%	14%	270 person(s)
Total boys aged 12-14 years old	8%	8%	8%	1,998 person(s)
Boys aged 12-14 years old in school	79%	90%	88%	1,763 person(s)
Boys aged 12-14 years old not in school	21%	10%	12%	235 person(s)

Note: Percentage is calculated on the basis of number of the total number of children within 12-14 yrs group, except for the first row of each section which is calculated on the basis of the total population.

3.1.13 Percentage of 12-14 year olds not in School, by Commune, in 2008



Note: Calculated as a percentage of the total 12-14 year old population in each commune

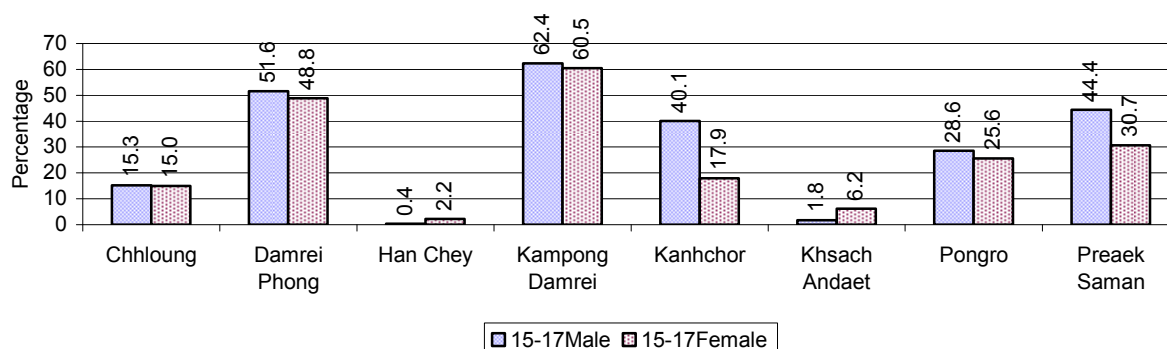
3.1.14 Upper Secondary Schools over 3 years

Description	2006	2007	2008
Number of upper secondary schools	4 school(s)	1 school(s)	1 school(s)
Number of upper secondary school rooms	36 room(s)	36 room(s)	27 room(s)
Number of upper secondary classes	25 class(es)	22 class(es)	24 class(es)
Number of upper secondary teachers	36 person(s)	36 person(s)	37 person(s)
Ratio of 15-17 yr olds to number of school	949	3,772	3,863
Ratio of 15-17 yr olds to number of school room	105	105	143
Ratio of 15-17 yr olds to number of classes	152	171	161
Ratio of 15-17 yr olds to number of teacher	105	105	104

3.1.15 Enrolment of 15-17 year old teenagers over 3 years

Description	2006	2007	2008
Number of teenage, 15-17 years old	3,797 person(s)	3,772 person(s)	3,863 person(s)
Number of teenage, 15-17 years old, who are not studying	1,210 person(s)	844 person(s)	926 person(s)
Percentage of teenage, 15-17 years old not studying	32%	22%	24%

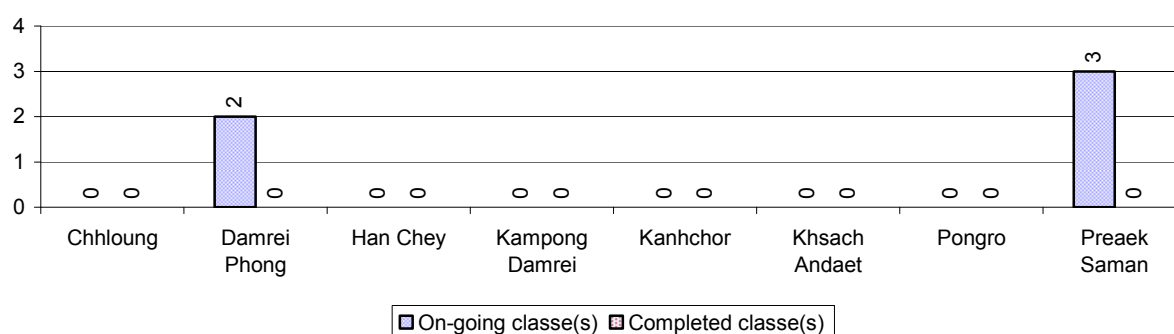
3.1.16 Percentage of 15-17 year old Teenagers not at School, by Commune, in 2008



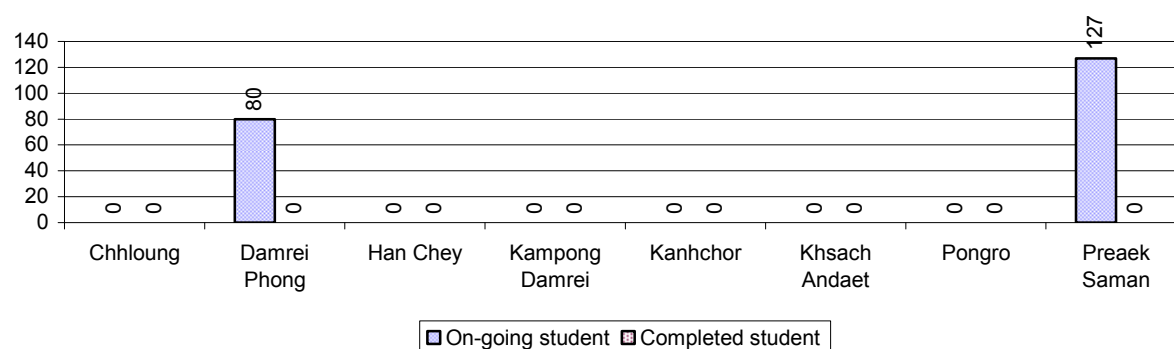
3.1.17 Literacy Classes as of 2008

Literacy classes	Organized by:		Other Program(s)	Total
	PDoEYS	NGOs		
Number of On-going literacy classes	5 class(es)	0 class(es)	0 class(es)	5 class(es)
Number of literacy students in on-going classes	207 person(s)	0 person(s)	0 person(s)	207 person(s)
Completed literacy class(es)	0 classes	0 classes	0 classes	0 classes
Number of literacy students that have completed literacy classes	0 person(s)	0 person(s)	0 person(s)	0 person(s)
Number of students that passed	0 person(s)	0 person(s)	0 person(s)	0 person(s)

3.1.18 Number of on-going and completed Literacy Classes, by Commune, in 2008



3.1.19 Students of on-going & completed Literacy Classes, by Commune, in 2008

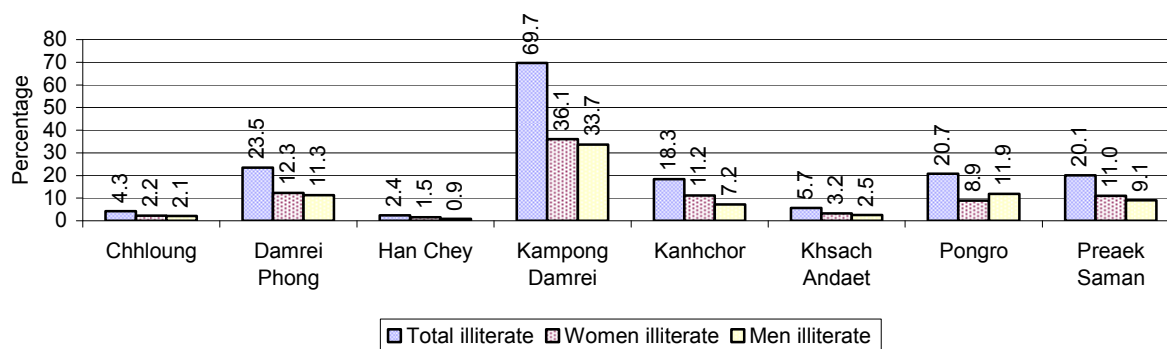


3.1.20 Percentage of illiterate People between 15-60, over 3 years

Illiteracy Status	2006 %	2007 %	2008	
			%	Number
Illiterate people, 15-60 years old	16%	16%	15%	4,554 person(s)
Illiterate females, 15-60 years old	8%	8%	8%	2,362 person(s)
Illiterate people, 15-17 years old	9%	9%	9%	361 person(s)
Illiterate females, 15-17 years old	5%	4%	5%	175 person(s)
Illiterate people, 18-24 years old	11%	11%	12%	666 person(s)
Illiterate females, 18-24 years old	6%	5%	6%	337 person(s)
Illiterate people, 25-60 years old	19%	19%	18%	3,527 person(s)
Illiterate females, 25-60 years old	10%	9%	9%	1,850 person(s)

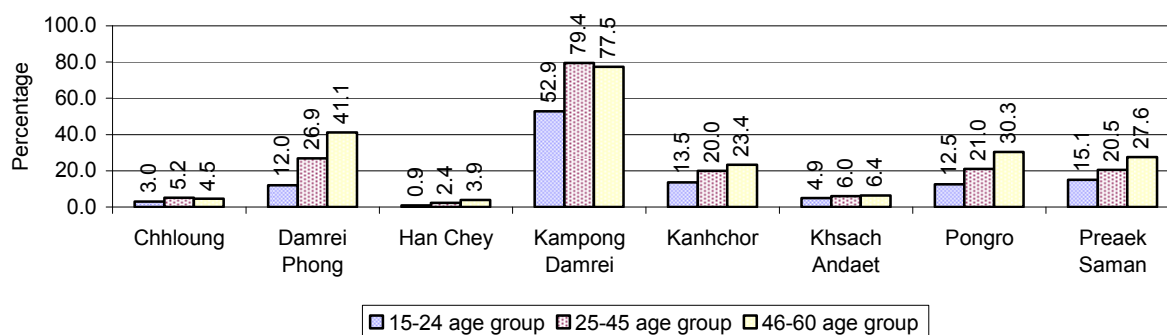
Note: Percentage is calculated on the basis of number of people in age each group.

3.1.21 Percentage illiterate People among 15-60 yrs old, by Commune, in 2008



Note: Percentages are calculated on the basis of number of people in that age group.

3.1.22 Percentage illiterate People for 15-24 yrs, 25-45 yrs and 46-60 yrs, by Commune, in 2008



Note: Percentage of illiterate people in each age group is calculated on the basis of number of people in that age group.

3.2 Health

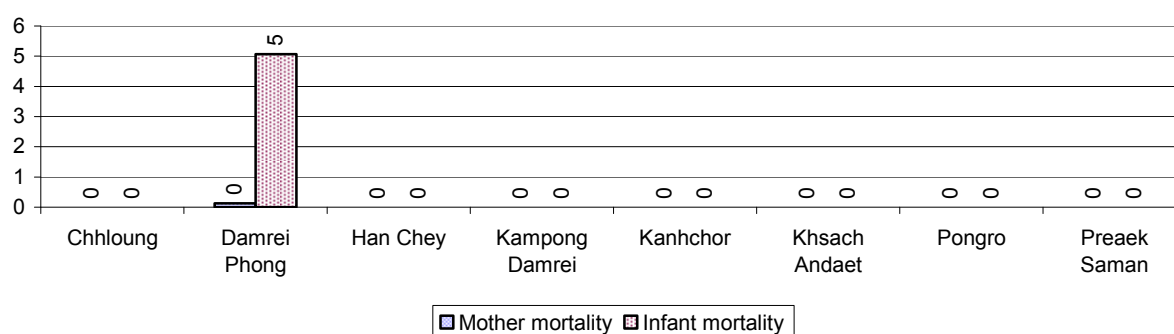
3.2.1 Health Situation of Women and Children, over 3 years

Description	2006	2007	2008
Number families with a birth during the year	714 families	735 families	664 families
Number of women who had their baby delivered by a TBA	488 person(s)	459 person(s)	364 person(s)
Percentage of women who had their baby delivered by a TBA	68 %	62 %	55 %
Number of women who had their baby delivered by a midwife	226 person(s)	276 person(s)	300 person(s)
Percentage of women had their baby delivered by a midwife	32 %	38 %	45 %
Number of mothers who died within 1 month of giving birth	5 person(s)	0 person(s)	1 person(s)
Mothers who died within 1 month of giving birth per 100,000 families having a delivery	700	0	151
Number of infants born during the year	711 person(s)	735 person(s)	664 person(s)
Number of Infants who died within 1 month	21 person(s)	15 person(s)	4 person(s)
Infants mortality within 1 month per 1,000 births	30	20	6

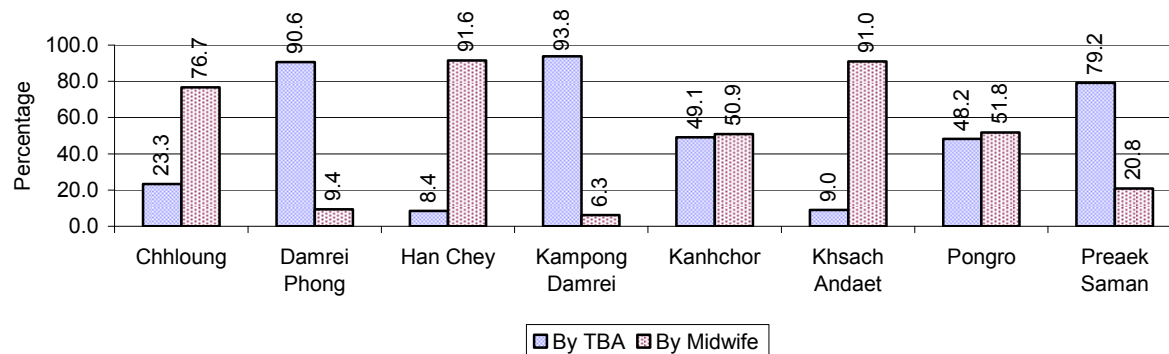
Description	2006	2007	2008
Number of children who died below the age of 5.	30 person(s)	47 person(s)	12 person(s)
Number of infants, aged 9-12 months, born during the year	474 person(s)	361 person(s)	324 person(s)
Nr. infants, aged 9-12 months, not receiving full immunization	34 person(s)	51 person(s)	47 person(s)
% of 9-12 months infants, not receiving full immunization	7 %	14 %	15 %

Note: TBA = Traditional Birth Attendant

3.2.2 Mothers dying within 0 days to 1 month of giving Birth and Infants dying within 1 month in 2008, by Commune

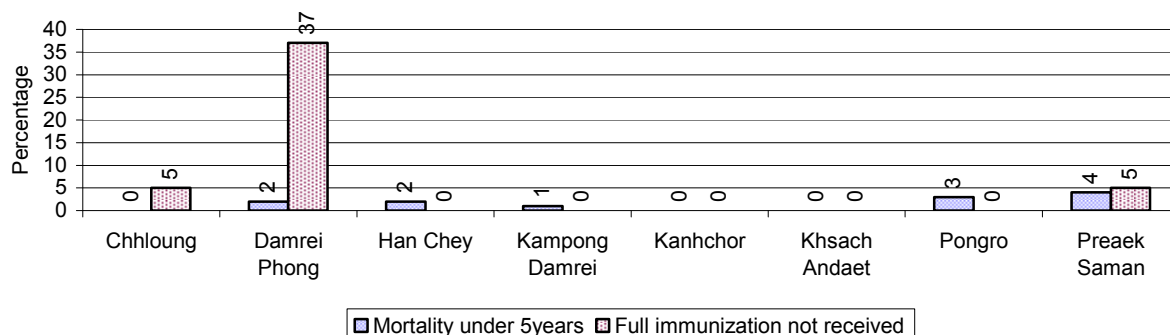


3.2.3 Percentage of Women delivering with a TBA or Midwife, by Commune



Note: Calculated as a percentage of total deliveries

3.2.4 Percentage of Children dying below 5 & of 9-12 months not receiving full Immunization, by Commune, in 2008



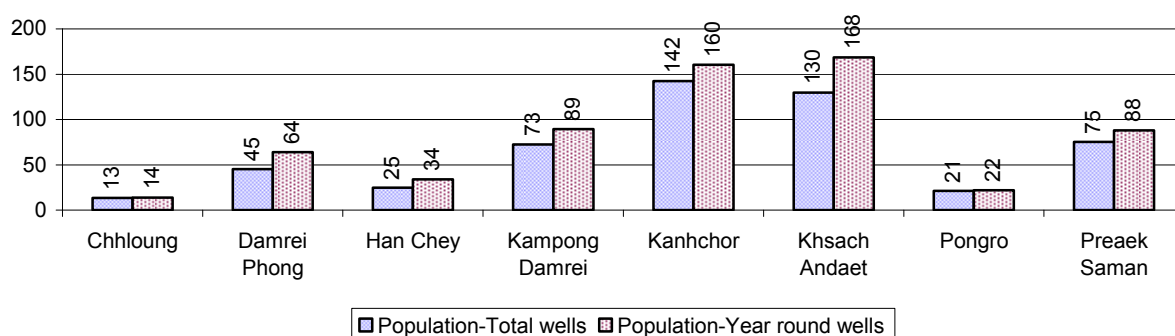
Note: Mortality rate calculated as a percentage of the total 5 year old population. Lack of immunization received calculated as a percentage of the total number 9-12 months olds there are

3.3 Water and Sanitation

3.3.1 Number of different types of Wells over 3 years

Type of wells	Number of wells by year		
	2006	2007	2008
<i>Total number of pumped or mixed wells</i>	1,505	1,128	1,229
Year-round usable pumped or mixed wells	1,179	900	1,094
Dry season unusable pump or mixed wells	326	228	135
Pump or mixed wells needing repair/rehabilitation	122	158	129
<i>Total number of ring wells</i>	523	387	568
Year-round usable ring wells	472	316	506
Dry season unusable ring wells	51	71	62
Ring wells needing repair/rehabilitation	75	75	81
<i>Total number of unprotected dug wells</i>	44	53	60
Year-round usable unprotected dug wells	30	42	43
Dry season unusable unprotected dug wells	14	11	17

3.3.2 Ratio of People to Wells, by Commune, in 2008

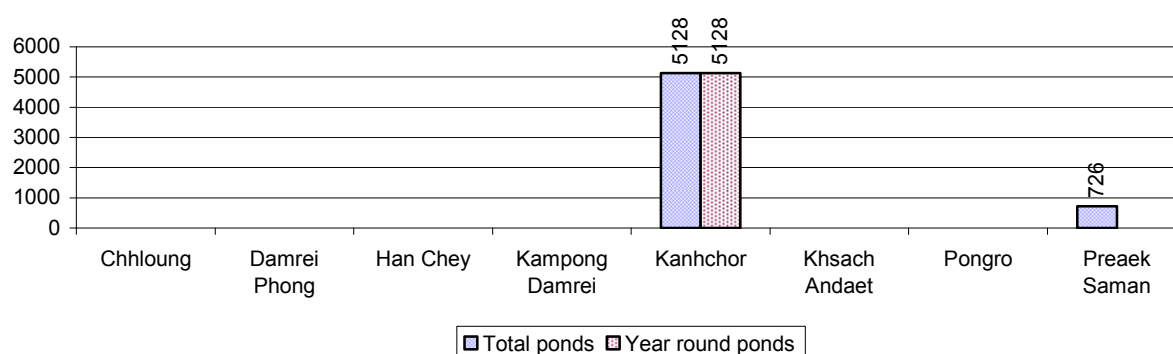


Note: Year-round wells excluding unprotected wells

3.3.3 Potable Ponds over 3 years

Type of Pond	2006	2007	2008
<i>Total number of normal-type ponds</i>	11 pond	13 pond	13 pond
Year-round usable normal-type ponds	0 pond	1 pond	1 pond
Dry season unusable normal-type ponds	11 pond	12 pond	12 pond
Normal-type ponds needing repair/rehabilitation	11 pond	1 pond	1 pond
<i>Total number of filter ponds</i>	0 pond	0 pond	0 pond
Year-round usable filter ponds	0 pond	0 pond	0 pond
Filter ponds, dry season unusable	0 pond	0 pond	0 pond
Filter ponds needing repair/rehabilitate	0 pond	1 pond	1 pond

3.3.4 Ratio of People to normal Ponds, by Commune in 2008



3.3.5 Ratio of People to Filter Ponds, by Commune, in 2008

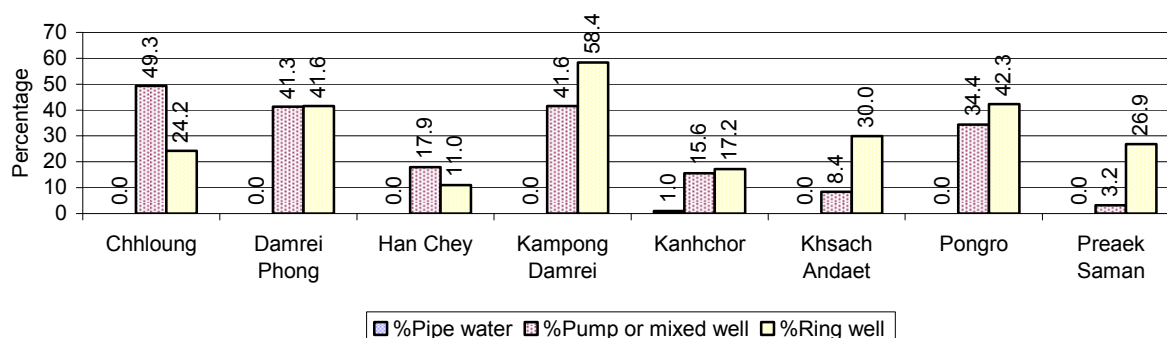
There were no filter ponds in this District in 2008

3.3.6 Source of potable Water for Households, over 3 years

Water sources	2006	2007	2008	
	%	%	%	Number
Families using water from purification system	7%	2 %	0 %	10 families
Families using water from pump, mixed wells	30%	25 %	25 %	2,608 families
Families using water from ring wells and open dug wells	25%	27 %	29 %	3,081 families
Families using water from pond	0%	0 %	0 %	26 families
Families using water from rain water storage	2%	1 %	1 %	131 families
Families using water from rivers, lakes, natural ponds and reservoirs	37%	45 %	44 %	4,646 families

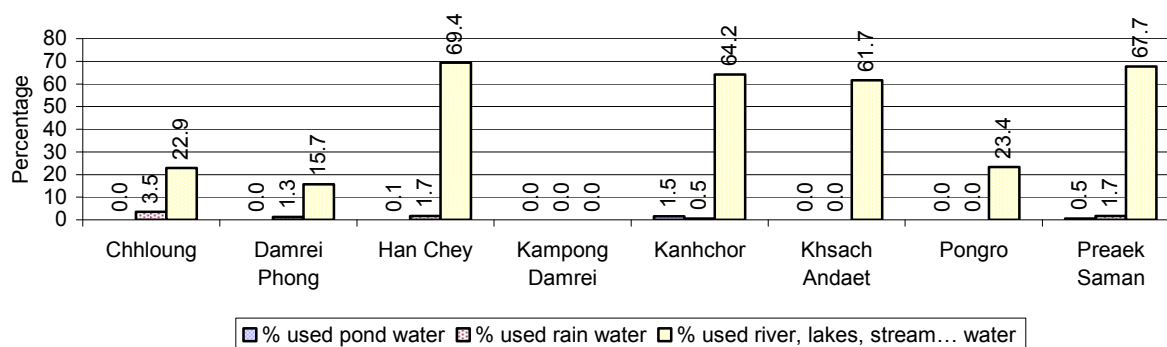
Note: Calculated as a percentage of the total number of families.

3.3.7 Percentage Families using different Water Sources, by Commune, in 2008



Note: Calculated as a percentage of the total number of families in each commune

3.3.8 Percentage Families using Water from Rain Water Storage, Ponds and natural Sources (rivers/lakes/natural ponds/reservoirs), by Commune, 2008



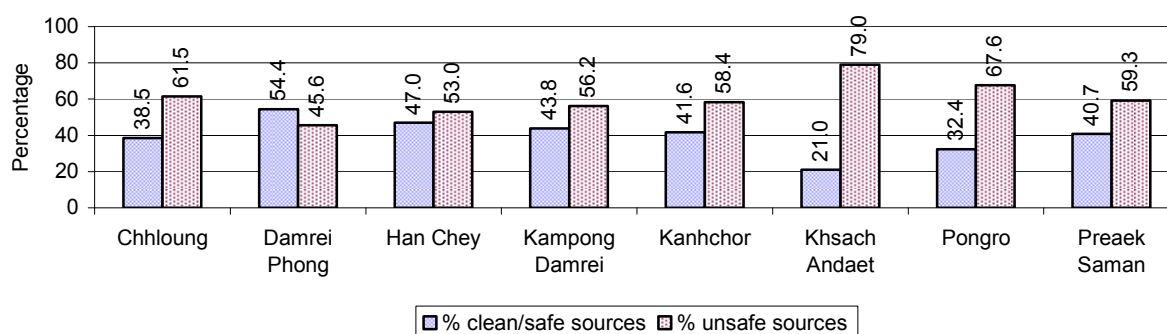
Note: Calculated as a percentage of the total number of families in each commune

3.3.9 Drinking Water Sources in the dry Season over 3 years

Percentage Families that get drinking water from:	2006 %	2007 %	2008	
			%	Number
from clean/safe sources	37 %	28 %	40 %	4,178 families
from unsafe sources	63 %	72 %	60 %	6,324 families

Note: Calculated as a percentage of the total number of families.

3.3.10 Percentage Families using safe and unsafe Water Sources in the dry Season, by Commune, in 2008



Note: Calculated as a percentage of the total number of families in each commune.

3.3.11 Drinking Water Purification by Households, over 3 years

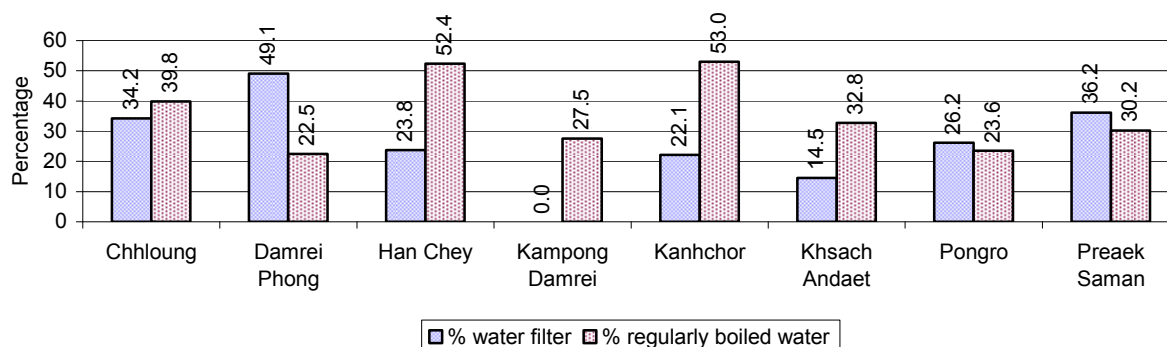
This table shows the different ways families make water safe for drinking.

Families, who:	2006	2007	2008	
	%	%	%	Number
Filter water for drinking	16%	26%	29 %	3,007 families
Boil water for drinking	37%	36%	35 %	3,688 families

Note: Calculated as a percentage of the total number of families

3.3.12 Percentage Families filtering Water or regularly boiling Water, by Commune, in 2008

This graph shows the different ways families make drinking water safe.



Note: Calculated on as a percentage of the total number of families in each commune.

3.3.13 Families' access to Water, over 3 years

Families access to water	2006	2007	2008	
	%	%	%	Number
Families with water at home or in less than 150m	44%	59%	59 %	6,203 families
Families with water 150m or more away from home	16%	18%	22 %	2,357 families

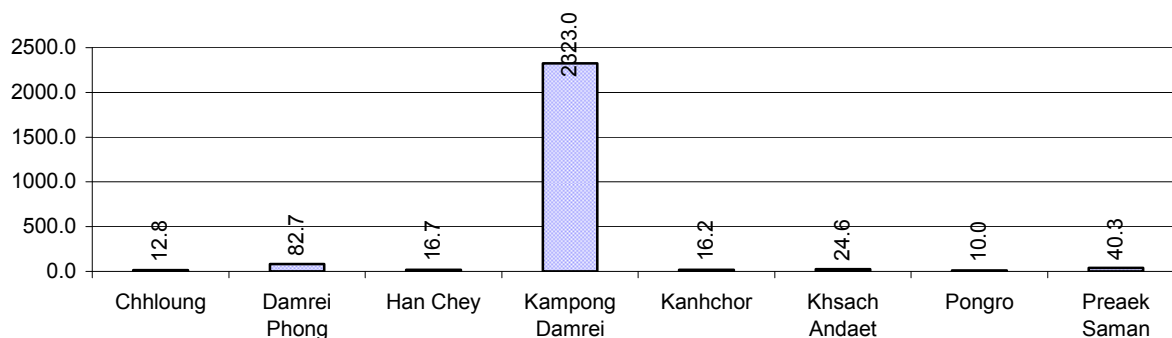
Note: Calculated as a percentage of the total number of families

3.3.14 Ratio of people to Latrines over 3 years

Description	2006	2007	2008	
	Ratio	Ratio	Ratio	Number
Ratio of people to latrines	19.8	19.3	18.2	2,932.0

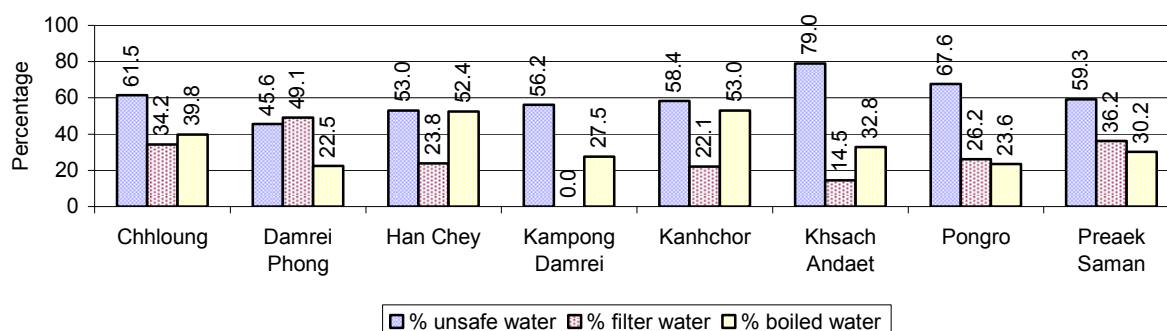
Note: Ratio calculated by dividing the number of houses with latrines by the total population

3.3.15 Ratio of People to Latrines, by Commune, in 2008



Note: Ratio calculated by dividing the number of houses with latrines by the total population in a Commune.

3.3.16 Percentage of Families drinking boiled, filtered or unsafe Water, by Commune, in 2008



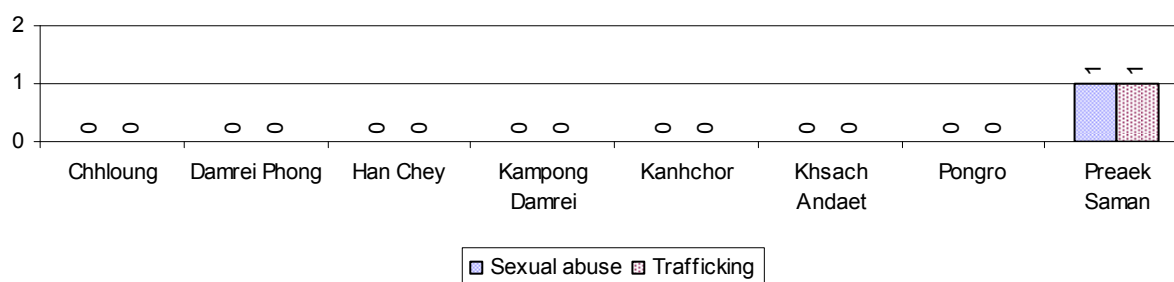
Note: Calculated as a percentage of the total number of families in each commune.

3.4 Vulnerable groups

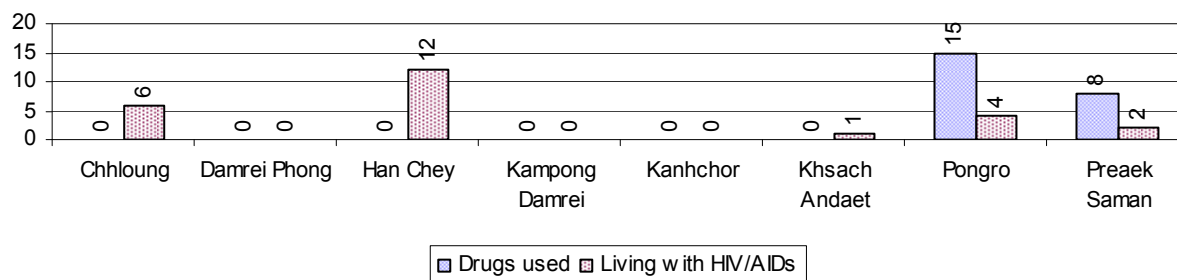
3.4.1 Vulnerable Groups in need of special Protection over 3 years

Vulnerable groups	2006	2007	2008
Victims of sexual abuse	1 person(s)	0 person(s)	1 person(s)
Victims of human trafficking	0 person(s)	1 person(s)	1 person(s)
Families with family member(s) using drugs	0 families	0 families	23 families
Families with family member(s) living with HIV/AIDS	13 families	25 families	25 families
Children under 18 yrs old whose parent died of AIDS	69 person(s)	32 person(s)	26 person(s)
Orphaned/abandoned children under 18 yrs old (all cases)	338 person(s)	549 person(s)	520 person(s)
Elderly persons without guardian	86 person(s)	93 person(s)	81 person(s)
Disabled people able to earn an income	43 person(s)	46 person(s)	42 person(s)
Disabled people unable to earn an income	35 person(s)	52 person(s)	33 person(s)
Disabled people under 18 yrs old	27 person(s)	21 person(s)	17 person(s)
Victims of natural disasters	553 families	381 families	397 families
Victims of land mines and unexploded weapons	9 person(s)	9 person(s)	5 person(s)

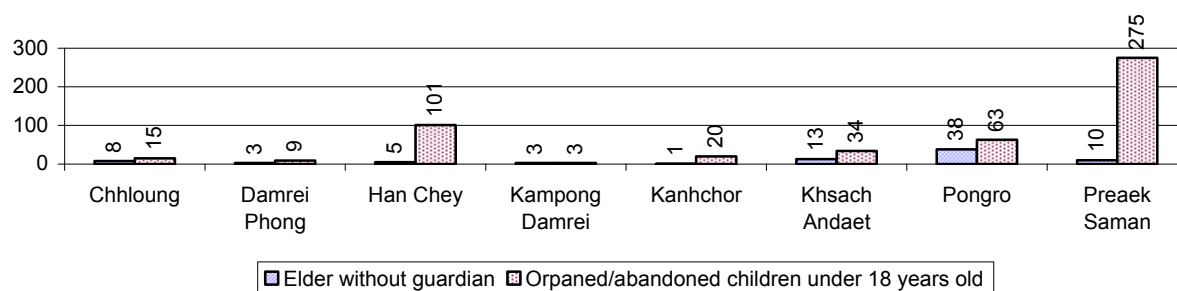
3.4.2 Registered Victims of sexual Abuse or Trafficking, by Commune, for 2008



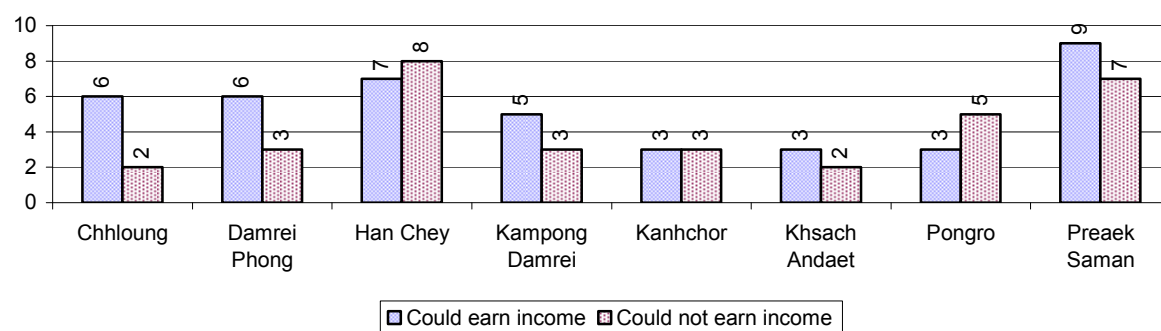
3.4.3 Registered Families with Member(s) using Drugs or living with HIV/AIDS, by Commune, for 2008



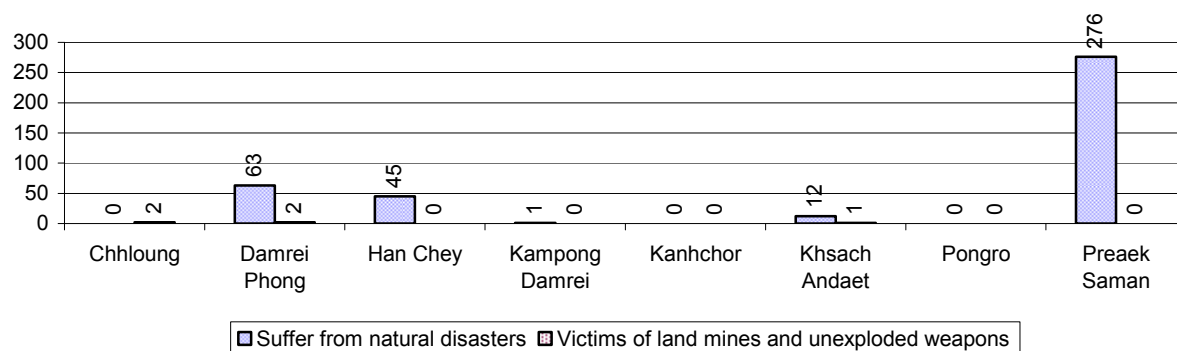
3.4.4 Elderly Persons without a Guardian and orphaned/abandoned Children under 18 years old, by Commune, for 2008



3.4.5 Number of disabled People who could or could not earn an Income, by Commune, for 2008



3.4.6 Number of Families who suffered from natural Disasters, and number of Victims of Land Mines and unexploded Weapons, by Commune, in 2008



3.5 Migration

3.5.1 Migration over 3 years

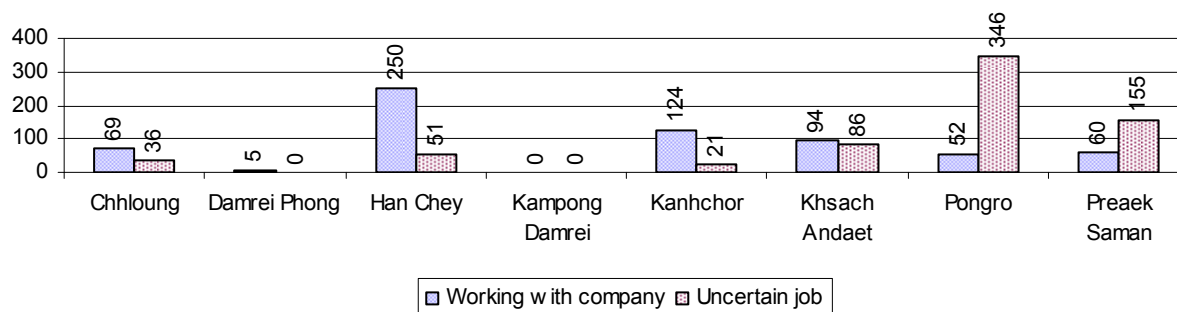
Description	2006	2007	2008
Number of families permanently in-migrated	72 families	103 families	62 families
Total number of people	300 person(s)	423 person(s)	272 person(s)
Total number of female	150 person(s)	242 person(s)	114 person(s)
Number of families permanently out-migrated	28 families	53 families	21 families
Total number of people	117 person(s)	215 person(s)	90 person(s)
Total number of female	61 person(s)	136 person(s)	55 person(s)
Number of families staying temporarily	46 families	33 families	62 families
Total number of people	170 person(s)	131 person(s)	224 person(s)
Total number of female	76 person(s)	64 person(s)	125 person(s)

3.5.2 Job Migration

Description	2006	2007	2008
Number of people migrated to work with company/factory	2%	2%	3% 654 persons
Number of people migrated to work, but have uncertain jobs	3%	3%	3% 695 persons

Note: Calculated as a percentage of the total population of 18-60 year olds

3.5.3 Number of People working outside their home Villages in a Company/Factory or with an uncertain Job in 2008

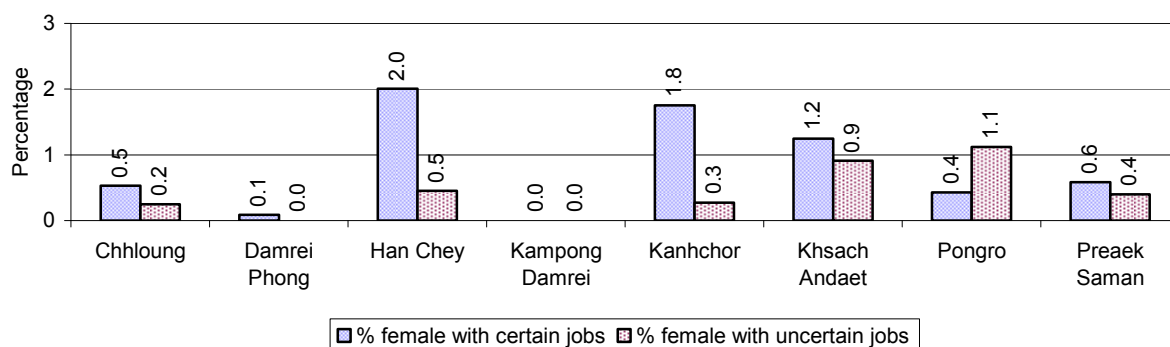


3.5.4 Female migration over 3 years

Description	2006 %	2007 %	2008	
			%	Number
Total number of migrants	2.3%	2.6%	2.5%	1,349 person(s)
Number of female migrants	1.2%	1.4%	1.3%	718 person(s)
Total number of migrants, who go to work with company/factory (with certain jobs)	1.0%	1.1%	1.2%	654 person(s)
Number of female migrants with certain jobs	0.7%	0.8%	0.9%	461 person(s)
Total number of migrants with uncertain jobs	1.3%	1.4%	1.3%	695 person(s)
Number of female migrants with uncertain jobs	0.4%	0.5%	0.5%	257 person(s)

Note: Calculated as a percentage of the total population

3.5.5 Percentage female Migrants with certain and uncertain Jobs, by Commune, in 2008



Note: Calculated as a percentage of the total population of the commune

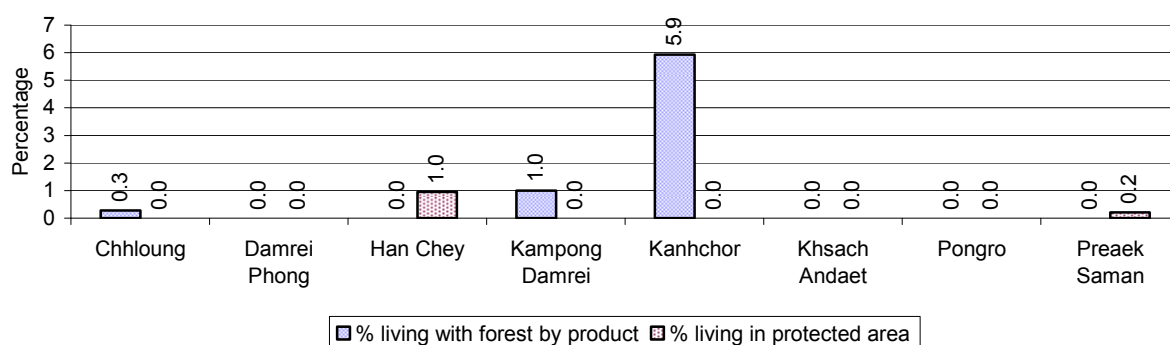
4 Natural Resources and Environment (NRE)

4.1 Families involved with NRE issues over 3 years

Description	2006 %	2007 %	2008	
			%	Number
Families living with forest by products	1 %	2 %	1 %	68 families
Families living in a protected area	3 %	0 %	0 %	19 families
Houses with access to garbage collection service	1 %	0 %	0 %	2 families
Families affected by environmental pollution	1 %	1 %	1 %	74 families
Families using chemical fertilizer	31 %	33 %	33 %	3,440 families
Families using chemical pesticide	36 %	34 %	33 %	3,420 families

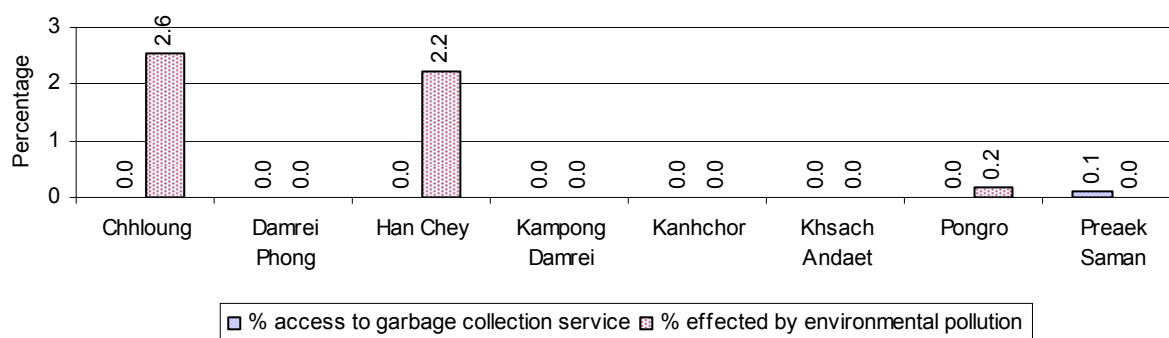
Note: Calculated as a percentage of the total number of families

4.2 Percentage of Families involved with Natural Resource issues, by Commune, for 2008



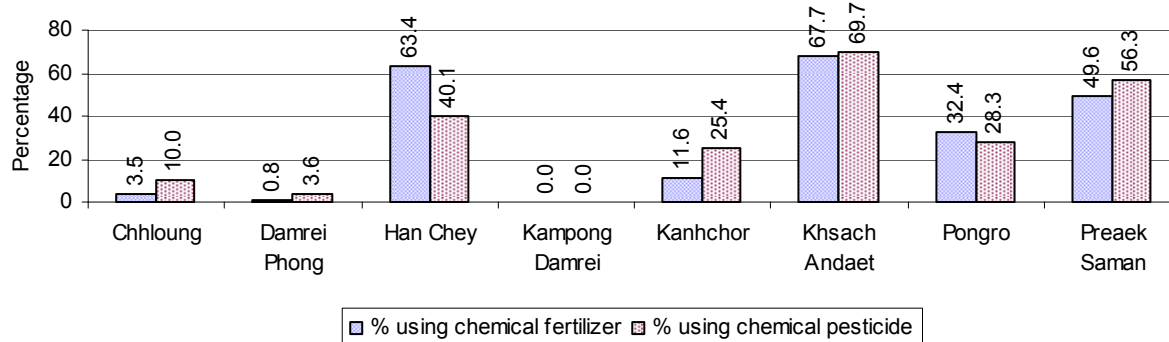
Note: Calculated as a percentage of the number of families in each commune

4.3 Percentage Houses with access to Garbage collection and Families affected by environmental Pollution, by Commune, for 2008



Note: Garbage collection is calculated as a percentage of the total number of houses in each commune and families affected by environmental pollution is calculated as a percentage of the total number of families in each commune.

4.4 Percentage Families using chemical Fertilizer and chemical Pesticides, by Commune, for 2008



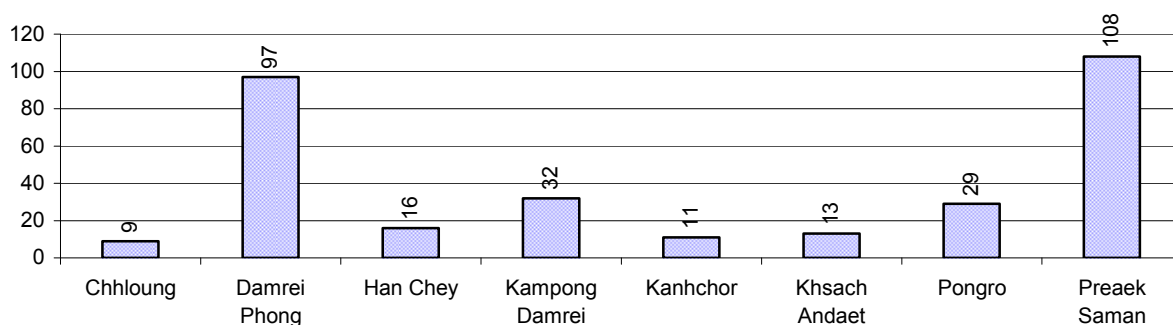
Note: Calculated as a percentage of the total number of families in each commune

5 Administration and Security

5.1 Birth Registration across 3 years

Description	2006	2007	2008
Number of infants to be registered	690 person(s)	720 person(s)	660 person(s)
Number of unregistered infants the year	245 person(s)	295 person(s)	315 person(s)
Percentage of infants unregistered	36 %	41 %	48 %

5.2 Number of unregistered Infants born in 2008, by Commune

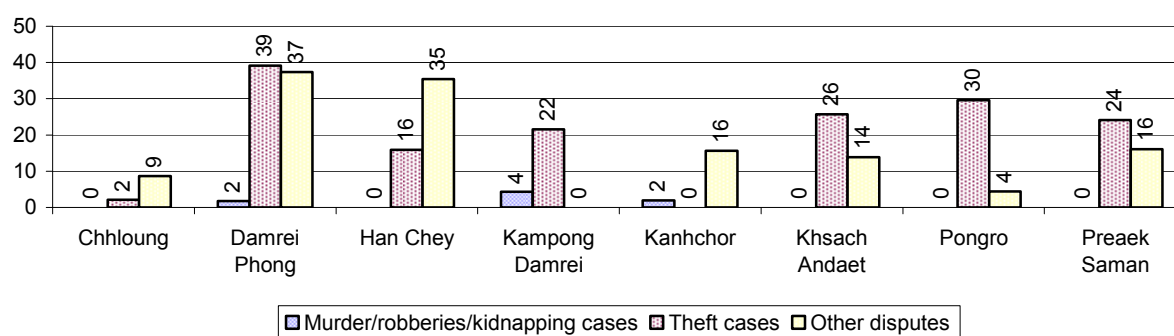


5.3 Registered criminal Cases over 3 years

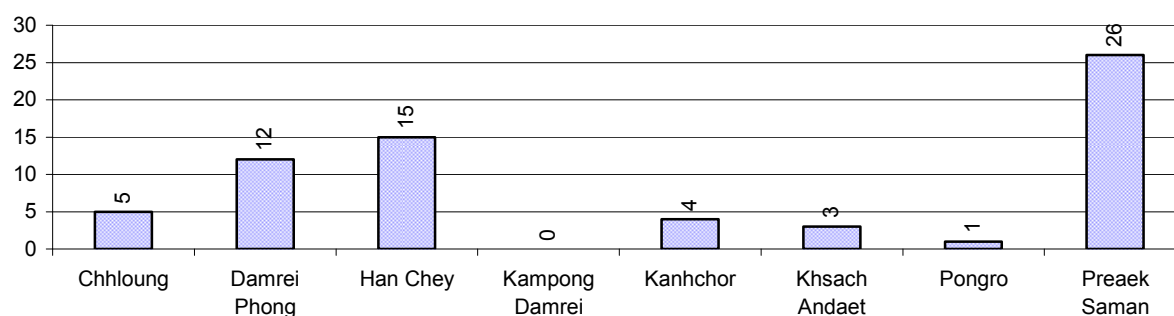
Description	2006	2007	2008
Murders, robberies and kidnapping cases	3 case(s)	3 case(s)	3 case(s)
Theft cases	71 case(s)	80 case(s)	103 case(s)
land dispute cases	71 case(s)	68 case(s)	66 case(s)
Other disputes cases	75 case(s)	77 case(s)	91 case(s)

Note: this reflects only registered criminal cases

5.4 Registered criminal Cases per 10,000 people, by Commune, for 2008



5.5 Number of registered Land Disputes, by Commune, in 2008

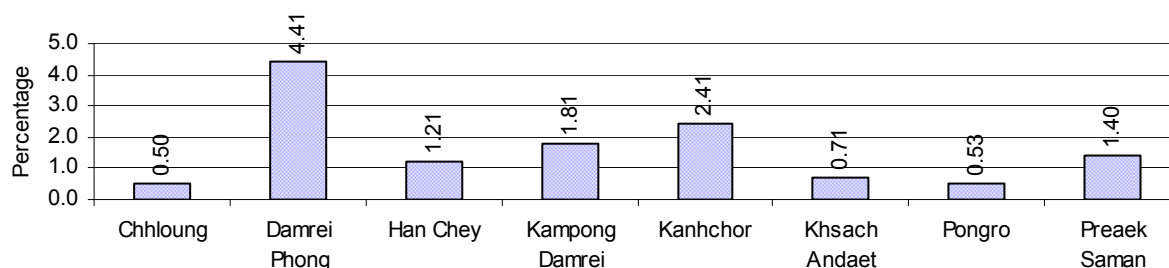


6 Gender

6.1 Registered Domestic Violence over 3 years

Description		2006	2007	2008
Families experiencing domestic violence		160 families	168 families	159 families(s)
% families experiencing domestic violence		2 %	2 %	2 %
Domestic violence cases reported by village chiefs		176 case(s)	180 case(s)	100 case(s)
Type	Physical violence	48 case(s)	39 case(s)	21 case(s)
	Sexual violence	2 case(s)	1 case(s)	0 case(s)
	Mental violence	79 case(s)	102 case(s)	40 case(s)
	Household economic violence	47 case(s)	38 case(s)	39 case(s)
Number of administrative decisions on domestic violence		62 case(s)	77 case(s)	98 case(s)
% of administrative decisions on domestic violence		35 %	43 %	98 %

6.2 Percentage of registered cases of Families experiencing domestic Violence, by Commune, in 2008



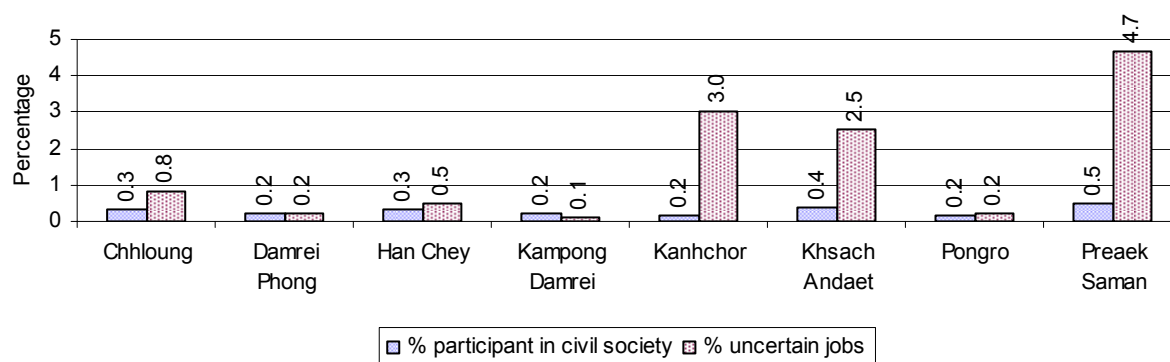
Note: Calculated as a percentage of the total number of families in each commune

6.3 Women's involvement over 3 years

Description	2006 %	2007 %	2008	
			%	Number
People participating in civil society	1%	1%	1%	294 person(s)
Women participating in civil society	0%	0%	0%	160 person(s)
People, 18-60 yrs, with uncertain/irregular jobs	6%	6%	3%	773 person(s)
Women, 18-60 yrs, with uncertain/irregular jobs	3%	3%	2%	396 person(s)

Note: Participation can be in NGOs, CBOs, credit groups, women's unions, parties and other civil society organizations. The first section is calculated as a percentage of the total population. The second section is calculated as a percentage of the total 18-60 year old population.

6.4 Percentage of Female Participants in Civil Society and of 18-60 year women with uncertain Jobs, by Commune, in 2008



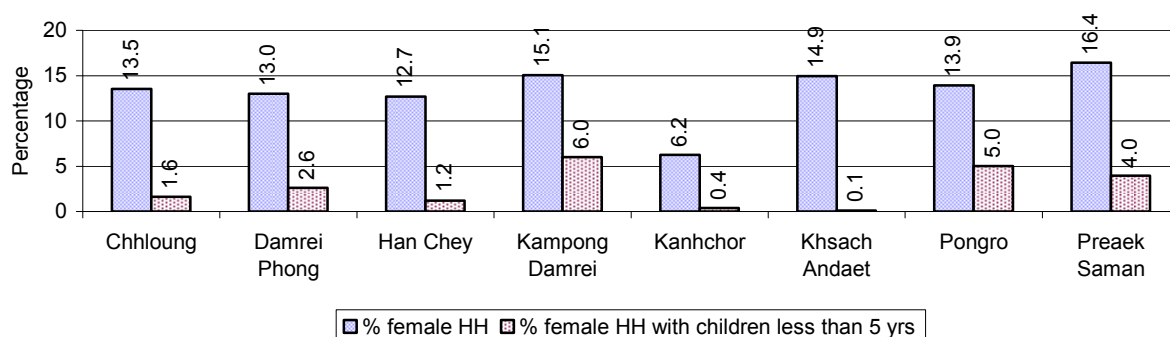
Note: Percentage of female participants in civil society is calculated as a percentage of the total population per commune. The percentage of 18-60 years old women with uncertain jobs is calculated as a percentage of the total 18-60 year old population per commune.

6.5 Female-headed Households over 3 years

Families with:	2006	2007	2008	
	%	%	%	Number
Households in which a woman is the family head	13%	13%	13%	1,414 families
Households in which a woman is the family head with children of less than 5 yrs	3%	3%	3%	272 families

Note: Calculated as a percentage of the total number of families

6.6 Percentage female-headed Households and with Children of less than 5 years old, by Commune, in 2008



Note: Calculated as a percentage of the total number of families in each commune

HH: Headed Household

7 Indigenous People in the District

7.1 Ethnic Minorities in the District over 3 years

Race of indigenous	2006		2007		2008	
	# families	# population	# families	# population	# families	# population
Phnong	0 families	0 person(s)	0 families	0 person(s)	0 families	0 person(s)
Kouy	0 families	0 person(s)	0 families	0 person(s)	0 families	0 person(s)
Stieng	0 families	0 person(s)	0 families	0 person(s)	0 families	0 person(s)
Mil	0 families	0 person(s)	0 families	0 person(s)	0 families	0 person(s)
Kroal	0 families	0 person(s)	0 families	0 person(s)	0 families	0 person(s)
Thmorn	0 families	0 person(s)	0 families	0 person(s)	0 families	0 person(s)
Khaonh	0 families	0 person(s)	0 families	0 person(s)	0 families	0 person(s)
Tompouonn	0 families	0 person(s)	0 families	0 person(s)	0 families	0 person(s)
Charay	0 families	0 person(s)	0 families	0 person(s)	0 families	0 person(s)
Kroeung	0 families	0 person(s)	0 families	0 person(s)	0 families	0 person(s)
Kavet	0 families	0 person(s)	0 families	0 person(s)	0 families	0 person(s)
Saouch	0 families	0 person(s)	0 families	0 person(s)	0 families	0 person(s)
Lun	0 families	0 person(s)	0 families	0 person(s)	0 families	0 person(s)
Kachak	0 families	0 person(s)	0 families	0 person(s)	0 families	0 person(s)
Praov	0 families	0 person(s)	0 families	0 person(s)	0 families	0 person(s)
Others	0 families	0 person(s)	0 families	0 person(s)	0 families	0 person(s)
Total	0 families	0 person(s)	0 families	0 person(s)	0 families	0 person(s)

Note: "Others" refer to other ethnic groups which are not listed.

7.2 Other Minorities in the District over 3 years

Minority	2006		2007		2008	
	# families	# population	# families	# population	# families	# population
Khmer Islamic	2,243 families	13,059 person(s)	2,462 families	10,411 person(s)	2,134 families	9,784 person(s)
Vietnamese	71 families	648 person(s)	71 families	648 person(s)	70 families	657 person(s)
Laos	0 families	0 person(s)	0 families	0 person(s)	0 families	0 person(s)

Note: Number of indigenous and minority population are additional data, so some village may not recorded.

SECTION C: PLANS AND PROJECTS

8 Priorities and Plans

8.1 Priorities of Commune Councils for 2009 in the District by Sector

The District Priority Activity Matrix (DPAM) data are taken from the CDPD. The DPAM is used for the District Integration Workshop (DIW), to show what kind of projects the commune has proposed in their Commune Investment Plan (CIP) for 2009. Donors, departments and other agencies then consider which projects they want to support and which projects they are not interested in. This results in Temporary Agreements between the Commune Council and the Supporter (NGO, Department, private donor, etc), as shown in table 8.2

No.	Project Name	Chhloung	Damrei Phong	Han Chey	Kampong Damrei	Kanhchor	Khsach Andaet	Pongro	Preaek Saman	Req.Project
		100101	100102	100103	100104	100105	100106	100107	100108	Total
Economic										
1	Compost fertilizer training	60 training	2 training				5 training		5 training	4
2	Chemical and pesticide application training	12 training		1 training	3 training		5 training		5 training	5
3	Vegetable growing training		88 family	41 family			20 family		5 Garden	4
4	Rice field demonstration		4 training					2 training		2
5	Mushroom growing training		4 training							1
6	Crop variety demos training		2 time							1
7	Rice cultivation technique training	12 training	2 training		9 training		5 training	8 training	5 training	6
8	Animal vaccination request	24 time		2 time	3 time	8 time		1200 Head	5 time	7
9	Village veterinary training		2 training		6 training			8 training		3
10	Pig raising training		4 training							1
11	Chicken raising training			40 family		16 training				2
12	Cow raising training	24 training				16 training			5 training	3
13	Agriculture association activation		20 Team							1
14	Agricultural marketing		2 time							1
15	Rice seed request			1000 Kg	1000 Kg	2000 Kg			4 T	4
16	Fruit trees seedling request		3000 Tree							1
17	Calf for raising request				10 Head			3 Head		2
18	Sow for raising request							15 Head		1
19	Chicken request							300 Head		1
20	Goat raising request								500 Head	1
21	Family fish pond construction	30 Pond			2 Pond	20 Pond	80 family	20 family		5
22	Fish raising training		53 family						2 training	2

District Data Book 2009: Development Plans and Projects

No.	Project Name	Chhloung	Damrei Phong	Han Chey	Kampong Damrei	Kanhchor	Khsach Andaet	Pongro	Preaek Saman	Req.Project
		100101	100102	100103	100104	100105	100106	100107	100108	Total
23	Fish raising day demonstration		3 time							1
24	Laterite/natural gravel road construction	0 km								1
25	Culvert construction				4 place					1
26	Bridger construction	1 place	2 place		2 place				4 place	5
27	Earth road repairing		5 km	2 km	54 km	4 km				7
28	Laterite/natural gravel road repairing	6 km	2 km	4 km		1 km	1 km	2 km	9 km	8
29	Canal construction					950 m	200 m		3450 m	3
30	Dam construction			1 place			2 place		1 place	4
31	Water gate construction						2 place			1
32	Irrigation pond construction					1 place				1
33	Canal repairing	1500 m		700 m	2100 m	350 m		500 m	6000 m	10
34	Dam repairing		1 place		3 place	2 place		1 place	5 place	7
35	Water gate repairing								1 place	1
36	Reservoirs repairing				5 place			100 m		2
37	Irrigation pond repairing						500 m			1
38	Cash credit		2 person	16 family	3 Team		5 time			4
39	Cow bank	2750 Head					20 Head			2
40	Livestock bank		17 Head						200 Head	2
41	Saving group association strengthening		16 time							1
42	Development of natural tourism area					1 place				1
Social										
1	Family planning							10 time		1
2	Antenatal care						10 time	10 time		2
3	Reproductive health awareness education	12 time	32 training	8 time	9 time	8 time	5 time		8 training	8
4	Reproductive health training for VHV	2 time								1
5	HIV/AIDS awareness education			8 training	3 training	32 time		10 time	5 time	5
6	Health/hygiene education								5 training	1

District Data Book 2009: Development Plans and Projects

No.	Project Name	Chhloung	Damrei Phong	Han Chey	Kampong Damrei	Kanhchor	Khsach Andaet	Pongro	Preaek Saman	Req.Project
		100101	100102	100103	100104	100105	100106	100107	100108	Total
	for local people									
7	Transmitted disease education and prevention			4 time						1
8	Health education on water use hygiene		16 training							1
9	Transmitting disease prevention education	12 time								1
10	Children immunization provision	12 time								1
11	Mobile health clinic provision								5 time	1
12	Health local service provision for women-children				3 time					1
13	TBA training				1 training					1
14	Mosquito nets distribution/treatment							239 mosqui-net		1
15	Malaria awareness education							5 time		1
16	Health center drug supply	6 time				16 time				3
17	Nutrition support					24 time				1
18	Latrine construction	240 toilet						658 toilet	700 toilet	3
19	Sanitation education	12 training			9 training					2
20	Village health post construction		2 building						1 building	2
21	Patient transportation means established		1 set							1
22	Maternity building construction		1 building							1
23	Water filter equipment supply	900 Container					1000 tank	13 tank		3
24	Family wate jars provision		40 tank							1
25	Pump wells construction					12 well			14 well	2
26	Ring wells construction	6 well	17 well	5 well	10 well				13 well	6
27	Ring wells repairing		10 well							1

District Data Book 2009: Development Plans and Projects

No.	Project Name	Chhloung	Damrei Phong	Han Chey	Kampong Damrei	Kanhchor	Khsach Andaet	Pongro	Preaek Saman	Req.Project
		100101	100102	100103	100104	100105	100106	100107	100108	Total
28	Literacy class		8 class		9 class				1 class	3
29	Literacy teacher training		8 person							1
30	Village library construction				3 building					1
31	Literacy class materials support		2 time							1
32	Junior high school construction			1 building						1
33	School renovation			1 building						1
34	School yard earth elevation			1 place						1
35	School building		1 building		2 building				5 building	3
36	Primary school creation/construction	1 building		1 building		1 building		1 building		4
37	Kindergarten school construction/repair	1 building	1 building	1 building			1 building	1 building		5
38	Teacher/volunteer teacher need		2 person		2 person					2
39	School materials support to poor pupils		100 set							1
40	Scholarship provision to poor pupils						5 time	1 time		2
41	Dormitory construction for teacher/pupils		1 building				1 building			2
42	Engine/car repairing skill training				9 training					1
43	Agricultural products processing/craft technique		2 time							1
44	Artificial limbs/handcart provision/repair		2 person							1
45	Skill training for disabled person			1 training						1
46	Food/materials support to disabled family	4 time								1
47	Flood refuge mound/temporary shelter provision	2 place		1 place		2 place		1 place	1 place	6

District Data Book 2009: Development Plans and Projects

No.	Project Name	Chhloung	Damrei Phong	Han Chey	Kampong Damrei	Kanhchor	Khsach Andaet	Pongro	Preaek Saman	Req.Project
		100101	100102	100103	100104	100105	100106	100107	100108	Total
48	Widows family assistance/support	24 time								1
49	Vulnerable people aid/support			1 set						1
50	House for the poor construction/repairing								10 family	1
NREM										
1	Environmental awareness and law education	12 time		2 time				2 time	5 time	4
2	Fishery law education			2 time	3 time	8 time	5 time		5 time	5
3	Forestry law education								5 time	1
4	Education on importance of the forests				9 training			2 training	5 time	3
5	Wildlife protection law education								5 time	1
6	Education on the effect of polluted water								5 time	1
7	Tree plantation project			400 Tree		8 time			2000 Tree	3
8	Flooded forest rehabilitation/planting					8 time			8000 Tree	2
9	Illegal fishing prevention	24 time	5 time	3 time	3 time	40 time	15 time		5 time	8
10	Strengthening fishery community	1 Fishing Community			2 time					2
11	Natural water ways/reservoirs rehabilitation/conservation		5 time			1 place	1 place	1 place	1 place	7
12	Flooded forest clearance prevention		5 time					5 time		2
13	Fish raising community support							1 Fishing Community		1
14	Community forestry activities support				3 Fishing Community	1 Forestry Community				3
15	Forest protection strengthening		5 time		300 piece					3
16	Wildlife hunting prevention				3 time					1

District Data Book 2009: Development Plans and Projects

No.	Project Name	Chhloung	Damrei Phong	Han Chey	Kampong Damrei	Kanhchor	Khsach Andaet	Pongro	Preaek Saman	Req.Project
		100101	100102	100103	100104	100105	100106	100107	100108	Total
	strengthening									
17	Sewage culvert system construction/rehabilitation	53 piece			1 place		25 place		2 place	4
18	Waste dumping creation/improvement							2 place		1
19	New sewage system construction	1 m								1
20	Sewage canal construction/rehabilitation	1650 m						4500 m		2
21	Drainage canal construction/rehabilitation			2 Line						1
Administration and Security										
1	Civil registration encouragement		5 time	2 time				5 time		3
2	CC capacity strengthening							1 training		1
3	Commune office construction/renovation				1 building					1
4	Boat/motor boat request					8 boat				1
5	Land law dissemination	6 time	2 training	2 time	3 training		5 time		5 time	6
6	Provision of land titles/certificates	504 doc	16 time	280 doc		800 doc	1000 doc	2 time	5 time	7
7	Land use planning	6 time	3 time	2 time			5 time			4
8	Village/commune border identification		20 Tree					6 Tree		2
9	Land conflict resolution committee strengthening		2 training							1
10	Social land concession project		700 family		9 training	80 family	357 family		5 time	5
11	People guard activities formation/strengthening		3 time	4 Team						2
12	Local security strengthening	12 time								1
13	Gambling control/elimination activation	24 time			9 training				5 time	3
14	Stealing elimination	12 time			3 time				5 time	3

District Data Book 2009: Development Plans and Projects

No.	Project Name	Chhloung	Damrei Phong	Han Chey	Kampong Damrei	Kanhchor	Khsach Andaet	Pongro	Preaek Saman	Req.Project
		100101	100102	100103	100104	100105	100106	100107	100108	Total
	activation									
15	Drug business/use prevention							10 time		1
16	Abused/violated/illegal acts quelled activation						10 time			1
17	Police post construction/renovation							1 building		1
18	Tough group control activation			8 time						1
19	Traffic sign installation							5 piece		1
20	Flood rescue capacity building/strengthening	12 set					10 set	2 training	50 set	6
21	Law/regulation dissemination						5 time			1
22	Human right and related law education	12 time								1
23	Local community establishment/strengthening								1 Fishing Community	1
24	Water pump group establishment	12 set							5 set	3
25	Poor household listing preparation/support	1 time			1 time				1 time	3
26	Market/local craft community formation		12 Team							1
Gender										
1	Gender mainstreaming among local people			2 training			10 time			2
2	Women & Children FP strengthening		2 training							1
3	Gender FP strengthening							5 time	2 training	2
4	Gender network meeting support/activation	12 time								1
5	Women leadership strengthening/capacity building	2 training								1

District Data Book 2009: Development Plans and Projects

No.	Project Name	Chhloung	Damrei Phong	Han Chey	Kampong Damrei	Kanhchor	Khsach Andaet	Pongro	Preaek Saman	Req.Project
		100101	100102	100103	100104	100105	100106	100107	100108	Total
6	Woman and children's rights dissemination				3 time				5 time	2
7	Women and men roles/rights dissemination								10 time	1
8	Women international day organizing				1 time				1 time	2
9	Women vocational training			1 training					5 training	2
10	Tailor skill training	12 training	1 training			16 training				3
11	Weaving skill training/weaving craft creation								5 training	1
12	Food cooking/processing skill training	6 training	1 training			16 training	5 training			4
13	Law against domestic violence dissemination	24 training	16 training	4 time	9 time	8 time		2 training	5 training	7
14	Rescue children & women from violence			1 training			1 place			2
15	Law against trafficking dissemination						5 time	10 time	10 time	3
16	Trafficking of women/children control activity strengthening				9 time					1
17	Swindle trick of broker prevention education								5 time	1

Source: CDPD – District Priority Matrix

8.2 Temporary Agreements by Commune, for 2009²

At the District Integration Workshop (DIW) the Supporters (donors, agencies, private donors, NGOs, etc.) identify which projects/activities they would like to support or they put forward their own projects to be implemented in a particular commune. Once there is agreement between Commune Councils and Supporters on specific projects a **Temporary Agreement** is signed by the commune and the Supporter to show their mutual commitment to the identified projects/activities.

It is important to keep in mind that such Temporary Agreements do not necessarily result in implementation.

8.2.1 Temporary Agreements for 2009 as per DIW 2008 for Commune: Chhloung

Commune GIS	Commune	Temporary Agreements				Supporter	Funding Source	Listed in CIP befor DIW
		Project Name	Quantity	Unit	Est.Cost (K.Riels)			
Social								
100101	Chhloung	Disaster respond preparedness	1	time	2222	Khmer Women Welfare Association		<input type="checkbox"/>
100101	Chhloung	HIV/AIDS carriers home based care	5	time	1200	Khmer Women Welfare Association		<input type="checkbox"/>
100101	Chhloung	Malaria day organizing at community level	1	time	60	Partners for Development		<input type="checkbox"/>
100101	Chhloung	Provincial level workshop on health education	1	time	80	Partners for Development		<input type="checkbox"/>
100101	Chhloung	Malaria education at school, 4-5 grade pupils group	1	time	40	Partners for Development		<input type="checkbox"/>
100101	Chhloung	Malaria education at school	1	time	200	Partners for Development		<input type="checkbox"/>
100101	Chhloung	Teacher refresher training	1	time	40000	Partners for Development		<input type="checkbox"/>
100101	Chhloung	Training of provincial and district education staffs	1	training	200	Partners for Development		<input type="checkbox"/>
100101	Chhloung	Teachers monitoring and pupils knowledge assessment	2	time	200	Partners for Development		<input type="checkbox"/>
100101	Chhloung	HIV/AIDS transmitted prevention building construction	1	place	4000	Department of Health		<input type="checkbox"/>
Gender								
100101	Chhloung	Gender network meeting support/activation	1	time	140	Department of Women	PIF	✓
100101	Chhloung	Women leadership strengthening/capacity building	1	training	140	Department of Women	PIF	✓

² Not all the data from the CDPD has been translated to English, this has resulted in some cells in the TA tables being blank.

8.2.2 Temporary Agreements for 2009 as per DIW 2008 for Commune: Damrei Phong

Commune GIS	Commune	Temporary Agreements				Supporter	Funding Source	Listed in CIP before DIW
		Project Name	Quantity	Unit	Est.Cost (K.Riels)			
Economic								
100102	Damrei Phong	Chicken raising supply	20	family	2000	Cambodian Rural Development Team		<input type="checkbox"/>
100102	Damrei Phong	Rice cultivation technique training	16	training	1200	Cambodian Rural Development Team		✓
100102	Damrei Phong	Mushroom growing training	40	family	1200	Cambodian Rural Development Team		✓
100102	Damrei Phong	Rice seed supply	40	family	600	Cambodian Rural Development Team		<input type="checkbox"/>
100102	Damrei Phong	Chicken raising training	20	family	1000	Cambodian Rural Development Team		<input type="checkbox"/>
100102	Damrei Phong	Vegetable growing training	8	training	600	Cambodian Rural Development Team		✓
100102	Damrei Phong	Saving group formation	16	Team	16000	Cambodian Rural Development Team		<input type="checkbox"/>
100102	Damrei Phong	Bio gas stove construction	12	family	12000	Cambodian Rural Development Team		<input type="checkbox"/>
100102	Damrei Phong	Irrigated system from Prek water resources	5	set	2000	Cambodian Rural Development Team		<input type="checkbox"/>
100102	Damrei Phong	Fish raising training	4	training	600	Cambodian Rural Development Team		✓
100102	Damrei Phong	Red worm raising training	8	training	4000	Cambodian Rural Development Team		<input type="checkbox"/>
100102	Damrei Phong	Fish pond support	8	family	1500	Cambodian Rural Development Team		<input type="checkbox"/>
100102	Damrei Phong	Agriculture association activation	16	Team	2000	Cambodian Rural Development Team		✓
100102	Damrei Phong	Saving group association strengthening	4	time	120	Cambodia Community Development Organization		✓
Social								
100102	Damrei Phong	Maternity building construction	1	building	4000	Department of Health		✓
100102	Damrei	KMeragBag¼GagTwks¥attamRKYSar	50	tank	10000	Cambodian Rural		✓

District Data Book 2009: Development Plans and Projects

Commune GIS	Commune	Temporary Agreements				Supporter	Funding Source	Listed in CIP before DIW
		Project Name	Quantity	Unit	Est.Cost (K.Riels)			
	Phong					Development Team		
100102	Damrei Phong	Ring wells construction	8	well	1500	Cambodian Rural Development Team		✓
100102	Damrei Phong	Ring wells repair	10	well	6000	Department of Rural Development		✓
100102	Damrei Phong	Ring wells repair	15	well	6000	Cambodian Rural Development Team		✓
100102	Damrei Phong	Small fund for malaria control	4	time	2400			□
100102	Damrei Phong	Malaria combat planning formulation	4	time	1200	Partners for Development		□
100102	Damrei Phong	Latrine construction	20	family	8000	Cambodian Rural Development Team		□
100102	Damrei Phong	HIV/AIDS carriers home based care	12	time	16000	Khmer Women Welfare Association		□
NREM								
100102	Damrei Phong	Forest protection strengthening	1	time	2400	Cambodia Community Development Organization		✓
100102	Damrei Phong	Forestry law dissemination	1	time	2400			□
100102	Damrei Phong	Forest protection strengthening	1	time	2000	Cambodia Community Development Organization		□
100102	Damrei Phong	Wildlife hunting control	1	time	2000	Cambodia Community Development Organization		□
100102	Damrei Phong	Environmental awareness education	3	training	1200	Cambodian Rural Development Team		□
Administration and Security								
100102	Damrei Phong	Land use planning	1	time	1200	Department of Land Management, Urban Planning & Construction	PIF	✓
100102	Damrei Phong	Social land concession project support	45	family	6000	Department of Land Management, Urban Planning & Construction	PIF	✓
Gender								

Commune GIS	Commune	Temporary Agreements				Supporter	Funding Source	Listed in CIP before DIW
		Project Name	Quantity	Unit	Est.Cost (K.Riels)			
100102	Damrei Phong	Law against domestic violence dissemination	1	training	120	Department of Women	PIF	✓
100102	Damrei Phong	Women & Children FP strengthening	1	training	120	Department of Women	PIF	✓

8.2.3 Temporary Agreements for 2009 as per DIW 2008 for Commune: Han Chey

Commune GIS	Commune	Temporary Agreements				Supporter	Funding Source	Listed in CIP before DIW
		Project Name	Quantity	Unit	Est.Cost (K.Riels)			
Economic								
100103	Han Chey	Income generation and saving program	80	family	40000	Khmer Women Welfare Association		<input type="checkbox"/>
Social								
100103	Han Chey	HIV/AIDS education and HIV positive people health care	10	time	16000	Khmer Women Welfare Association		<input type="checkbox"/>
100103	Han Chey	Provincial level workshop on health education	1	time	600	Partners for Development		<input type="checkbox"/>
100103	Han Chey	Malaria education to 5 grade school pupils	1	time	600	Partners for Development		<input type="checkbox"/>
100103	Han Chey	Malaria education at school	111	person	111	Partners for Development		<input type="checkbox"/>
100103	Han Chey	Target trained teachers refresher training	35	person	4000	Partners for Development		<input type="checkbox"/>
100103	Han Chey	Training of provincial and district education staffs	111	person	111	Partners for Development		<input type="checkbox"/>
100103	Han Chey	Trained teacher monitoring and pupils knowledge assessment	35	person	2300	Partners for Development		<input type="checkbox"/>
Gender								
100103	Han Chey	Women vocational training	0	training	0	Department of Women		✓
100103	Han Chey	Law against domestic violence dissemination	0	time	0	Department of Women		✓
100103	Han Chey	Gender mainstreaming among local people	0	training	0	Department of Women		✓

8.2.4 Temporary Agreements for 2009 as per DIW 2008 for Commune: Kampong Damrei

Commune GIS	Commune	Temporary Agreements				Supporter	Funding Source	Listed in CIP before DIW
		Project Name	Quantity	Unit	Est.Cost (K.Riels)			
Economic								
100104	Kampong Damrei	Saving group strengthening	2	Team	600	Cambodia Community Development Organization		<input type="checkbox"/>
100104	Kampong Damrei	Earth road repair	2	km	0	Department of Rural Development		✓
Social								
100104	Kampong Damrei	Malaria awareness education at school	0		0	Partners for Development		<input type="checkbox"/>
100104	Kampong Damrei	Malaria awareness trainer strengthening	4	person	504	Partners for Development		<input type="checkbox"/>
100104	Kampong Damrei	Malarial training impact monitoring	4	person	265	Partners for Development		<input type="checkbox"/>
NREM								
100104	Kampong Damrei	Saving group formation and NTFP group strengthening	4	time	4000	Cambodia Community Development Organization		<input type="checkbox"/>
100104	Kampong Damrei	Forest protection strengthening	2	training	2000	Cambodia Community Development Organization		<input type="checkbox"/>
100104	Kampong Damrei	Forest protection strengthening	2	time	2000	Cambodia Community Development Organization		✓
100104	Kampong Damrei	Community forestry activities support	1	Fishing Community	8000	Cambodia Community Development Organization		✓
100104	Kampong Damrei	Community forestry activities support	1	Forestry Community	24000	Cambodia Community Development Organization		✓
Administration and Security								
100104	Kampong Damrei	Commune land use planning formulation	1	place	12000	Department of Land Management, Urban Planning & Construction		<input type="checkbox"/>
100104	Kampong Damrei	Social land concession project support	1	place	6000	Department of Land Management, Urban Planning & Construction		✓
Gender								

Commune GIS	Commune	Temporary Agreements				Supporter	Funding Source	Listed in CIP before DIW
		Project Name	Quantity	Unit	Est.Cost (K.Riels)			
100104	Kampong Damrei	Brainstorming forum with commune leaders and gender focal point on local gender mainstreaming	2	person	140	Department of Women		<input type="checkbox"/>
100104	Kampong Damrei	Local leaders and CWCC focal point meeting on Gender mainstreaming in CIP	1	training	140	Department of Women		<input type="checkbox"/>

8.2.5 Temporary Agreements for 2009 as per DIW 2008 for Commune: Kanhchor

Commune GIS	Commune	Temporary Agreements				Supporter	Fundi ng Sourc e	Listed in CIP befor DIW
		Project Name	Quantity	Unit	Est.Cost (K.Riels)			
Economic								
100105	Kanhchor	Phnom Lok tourist attraction potential study	1	place	140	Department of Tourism		<input type="checkbox"/>
Social								
100105	Kanhchor	Malaria awareness education at school for teachers and pupils	2	training	0	Partners for Development		<input type="checkbox"/>
100105	Kanhchor	Malaria awareness trainer strengthening	4	person	140	Partners for Development		<input type="checkbox"/>
100105	Kanhchor	Malarial training impact monitoring	4	person	265	Partners for Development		<input type="checkbox"/>
Administration and Security								
100105	Kanhchor	Khmer rouge trial dissemination	1	training	400	Association for Development and Human Rights of Cambodia		<input type="checkbox"/>
100105	Kanhchor	Social land concession project support	0	family	6000	Department of Land Management, Urban Planning & Construction		✓
Gender								
100105	Kanhchor	Brainstorming forum with local leaders and gender focal point on local gender mainstreaming	2	person	140	Department of Women		<input type="checkbox"/>
100105	Kanhchor	Local leaders and CWCC focal point meeting on Gender mainstreaming in CIP	2	person	140	Department of Women		<input type="checkbox"/>

8.2.6 Temporary Agreements for 2009 as per DIW 2008 for Commune: Khsach Andaet

Commune GIS	Commune	Temporary Agreements				Supporter	Funding Source	Listed in CIP befor DIW
		Project Name	Quantity	Unit	Est.Cost (K.Riels)			
Economic								
100106	Khsach Andaet	Vegetable growing training	1	Team	1800	Department of Women		✓
Social								
100106	Khsach Andaet	Malaria awareness trainer strengthening	4	person	504	Partners for Development		<input type="checkbox"/>
100106	Khsach Andaet	Teacher follow up monitoring after training session	4	person	265	Partners for Development		<input type="checkbox"/>
100106	Khsach Andaet	Malaria awareness education at school for children	0		0	Partners for Development		<input type="checkbox"/>
Gender								
100106	Khsach Andaet	Gender mainstreaming among local people	2	person	140	Department of Women		✓
100106	Khsach Andaet	Law against trafficking dissemination	2	time	800	Department of Social and Veteran Affairs and Youth Rehabilitation		✓
100106	Khsach Andaet	Gender mainstreaming among local people	2	person	140	Department of Women		✓

8.2.7 Temporary Agreements for 2009 as per DIW 2008 for Commune: Pongro

Commune GIS	Commune	Temporary Agreements				Supporter	Funding Source	Listed in CIP before DIW
		Project Name	Quantity	Unit	Est.Cost (K.Riels)			
Social								
100107	Pongro	Malaria awareness dissemination to community	1	time	600	Partners for Development		<input type="checkbox"/>
100107	Pongro	Malaria awareness education at school for children	0		0	Partners for Development		<input type="checkbox"/>
100107	Pongro	Malaria awareness trainer strengthening	4	person	502	Partners for Development		<input type="checkbox"/>
100107	Pongro	Training results monitoring	4	person	265	Partners for Development		<input type="checkbox"/>
100107	Pongro	HIV/AIDS awareness education	1	time	16000	Khmer Women Welfare Association		✓

Commune GIS	Commune	Temporary Agreements				Supporter	Funding Source	Listed in CIP befor DIW
		Project Name	Quantity	Unit	Est.Cost (K.Riels)			
Gender								
100107	Pongro	Women rights dissemination	0		0	Association for Development and Human Rights of Cambodia		<input type="checkbox"/>
100107	Pongro	Law against trafficking dissemination	2	person	140	Department of Women		✓
100107	Pongro	Law against trafficking dissemination	2	time	60	Department of Social and Veteran Affairs and Youth Rehabilitation		✓
100107	Pongro	Gender FP strengthening	2	person	140	Department of Women		✓

8.2.8 Temporary Agreements for 2009 as per DIW 2008 for Commune: Preaek Saman

Commune GIS	Commune	Temporary Agreements				Supporter	Funding Source	Listed in CIP befor DIW
		Project Name	Quantity	Unit	Est.Cost (K.Riels)			
Economic								
100108	Preaek Saman	Income generation program	80	family	40000	Khmer Women Welfare Association		<input type="checkbox"/>
100108	Preaek Saman	Dam repairing	1	place	190000	Department of Water Resources and Meteorology		✓
100108	Preaek Saman	Vegetable growing training	1	Team	1800	Department of Women		✓
Social								
100108	Preaek Saman	Malaria combat planning formulation 3 months meeting at health center	4	training	32000	Partners for Development		<input type="checkbox"/>
100108	Preaek Saman	Disaster respond preparedness	0		0	Khmer Women Welfare Association		<input type="checkbox"/>
100108	Preaek Saman	Small health fund support for health center committee and CC	0		3200	Partners for Development		<input type="checkbox"/>
NREM								
100108	Preaek Saman	Wetland conservation	1	place	1000	Department of Environment		<input type="checkbox"/>
Administration and Security								

District Data Book 2009: Development Plans and Projects

Commune GIS	Commune	Temporary Agreements				Supporter	Funding Source	Listed in CIP before DIW
		Project Name	Quantity	Unit	Est.Cost (K.Riels)			
100108	Preaek Saman	Social land concession project support	0	time	6000	Department of Land Management, Urban Planning & Construction		✓
Gender								
100108	Preaek Saman	Brainstorming forum with local leaders and focal point on local gender mainstreaming	2	person	140	Department of Women		□
100108	Preaek Saman	Law against trafficking dissemination	2	training	800	Department of Social and Veteran Affairs and Youth Rehabilitation		✓
100108	Preaek Saman	Gender FP strengthening	2	person	140	Department of Women		✓

Source: CDPD, District Level Detail TA resulting from DIW

8.3 Outputs, estimated and actual costs of C/S Fund Projects between 2005 and 2008, by Commune

Commune	Project Type	Budget Year	Output		Quantity	Unit	Unit Cost MR	
			Description	Type			Estimate	Actual
Chhloung	Irrigation	2005	Canal	Repair	0.55	Km	3.94	9.32
Chhloung	Rural Transport	2005	Pipe culvert (general)	New	8	Place	13.92	22.48
Chhloung	Rural Transport	2005	Earth road	Repair	0.55	Km	9.65	22.48
Chhloung	Irrigation	2005	Canal	New	1.8	Km	5.81	9.32
Chhloung	Rural Transport	2006	Laterite road	Repair	0.665	Km	11.47	8.75
Chhloung	Irrigation	2006	Canal	Repair	0.7	Km	21.71	17.40
Chhloung	Rural Transport	2007	Single pipe culvert	New	1	Place	1.45	36.00
Chhloung	Rural Transport	2007	Laterite road	Repair	1.4	Km	43.62	36.00
Chhloung	Rural Transport	2008	Laterite road	Repair	2.868	Km	75.99	41.08
Chhloung	Rural Transport	2008	Single pipe culvert	New	4	Place	6.18	41.08
Damrei Phong	Rural Transport	2005	Earth road	Repair	1.8	Km	19.76	25.48
Damrei Phong	Rural Transport	2005	Pipe culvert (general)	New	3	Place	6.51	25.48
Damrei Phong	Rural Transport	2006	Earth road	Repair	2.55	Km	29.48	29.30
Damrei Phong	Rural Transport	2007	Earth road	New	1.25	Km	25.41	26.45
Damrei Phong	Rural Transport	2007	Single pipe culvert	New	2	Place	3.04	26.45
Damrei Phong	Rural Transport	2008	Earth road	New	1.65	Km	50.48	32.57
Damrei Phong	Rural Transport	2008	Single pipe culvert	New	4	Place	14.71	32.57
Han Chey	Rural Transport	2005	Earth road	Repair	2.2	Km	33.58	25.99
Han Chey	Irrigation	2005	Earth dam	Repair	0.64	Km	5.96	4.65
Han Chey	Rural Transport	2006	Earth road	Repair	2.05	Km	42.79	35.51
Han Chey	Rural Transport	2007	Laterite road	Repair	0.965	Km	36.32	31.71
Han Chey	Rural Transport	2007	Single pipe culvert	New	3	Place	5.04	31.71
Han Chey	Rural Transport	2008	Single pipe culvert	New	1	Place	2.64	26.71
Han Chey	Rural Transport	2008	Laterite road	Repair	0.741	Km	24.08	26.71
Han Chey	Irrigation	2008	Canal	Repair	1.071	Km	16.06	16.06
Kampong Damrei	Rural Transport	2005	Earth road	Repair	13	Km	23.89	23.43
Kampong Damrei	Rural Transport	2007	Single pipe culvert	New	1	Place	3.42	49.66
Kampong Damrei	Rural Transport	2007	Earth road	Repair	1.8	Km	48.04	49.66
Kanhchor	Rural Transport	2005	Earth road	Repair	1.1	Km	22.41	21.44
Kanhchor	Rural Transport	2005	Pipe culvert (general)	New	2	Place	4.91	21.44
Kanhchor	Irrigation	2006	Earth dam	Repair	0.2	Km	13.46	13.50
Kanhchor	Irrigation	2006	Single pipe Culvert with gate	New	1	Place	3.40	13.50
Kanhchor	Rural Transport	2006	Earth road	Repair	1.077	Km	20.79	17.50

District Data Book 2009: Development Plans and Projects

Commune	Project Type	Budget Year	Output		Quantity	Unit	Unit Cost MR	
			Description	Type			Estimate	Actual
Kanhchor	Irrigation	2007	Canal	New	0.6	Km	37.29	28.00
Kanhchor	Rural Transport	2008	Single pipe culvert	New	2	Place	6.34	40.30
Kanhchor	Rural Transport	2008	Laterite road	Repair	1.408	Km	33.97	40.30
Khsach Andaet	Irrigation	2005	Canal	New	1.1	Km	9.68	23.70
Khsach Andaet	Irrigation	2005	Earth dam	New	0.25	Km	9.74	23.70
Khsach Andaet	Irrigation	2005	Earth dam	Repair	0.25	Km	7.38	23.70
Khsach Andaet	Rural Transport	2006	Earth road	Repair	2.95	Km	37.02	29.49
Khsach Andaet	Rural Transport	2007	Single pipe culvert	New	1	Place	1.44	35.82
Khsach Andaet	Rural Transport	2007	Earth road	Repair	1.99	Km	36.11	35.82
Khsach Andaet	Rural Transport	2008	Laterite road	Repair	1.436	Km	29.69	32.71
Khsach Andaet	Rural Transport	2008	Single pipe culvert	New	2	Place	3.10	32.71
Pongro	Irrigation	2005	Earth dam	Repair	0.59	Km	28.70	32.35
Pongro	Irrigation	2005	Single pipe culvert	New	1	Place	4.33	32.35
Pongro	Rural Transport	2006	Laterite road	Repair	0.835	Km	38.16	29.75
Pongro	Rural Transport	2007	Laterite road	Repair	1.45	Km	44.56	47.17
Pongro	Rural Transport	2007	Double pipe culvert	New	1	Place	5.08	47.17
Pongro	Rural Transport	2008	Single pipe culvert	New	1	Place	3.17	37.65
Pongro	Rural Transport	2008	Laterite road	Repair	1.62	Km	34.48	37.65
Preaek Saman	Irrigation	2005	Earth dam	Repair	1.4	Km	19.27	20.00
Preaek Saman	Irrigation	2005	Single pipe Culvert with gate	New	3	Place	8.09	20.00
Preaek Saman	Irrigation	2006	Canal	Repair	1.05	Km	32.97	24.00
Preaek Saman	Rural Transport	2006	Earth road	Repair	0.3	Km	8.09	5.80
Preaek Saman	Rural Transport	2006	Earth road	Repair	0.4	Km	12.02	11.00
Preaek Saman	Rural Transport	2007	Double pipe culvert	New	3	Place	15.13	39.42
Preaek Saman	Rural Transport	2007	Earth road	Repair	4.8	Km	110.08	39.42
Preaek Saman	Rural Transport	2008	Laterite road	Repair	1.77	Km	36.41	36.41

Source: PID

8.4 Total Expenditure on C/S Fund Projects by sector and commune between 2005 and 2008

Sector	Total Cost in Million Riels							
	Chhloung	Damrei Phong	Han Chey	Kampong Damrei	Kanhchor	Khsach Andaet	Pongro	Preaek Saman
Irrigation	26.72		20.71		41.49	23.70	32.35	44.00
Rural Transport	108.31	113.80	119.92	23.43	79.24	98.02	114.56	92.63

Source: PID

8.5 Actual 2009 C/S Fund projects by Commune

Commune	Project Type	Project Output		Quantity	Unit	Fund Source (Riels)		
		Description	Type			Total	C/S	Local Contribution
Chhloung	Rural Transport	Natural Gravel road	Repair	0.7	km	39,436,482	39,036,482	400,000
Chhloung	Rural Transport	Natural Gravel road	Repair	0.5	km	39,436,482	39,036,482	400,000
Chhloung	Rural Transport	Single pipe culvert 0.6m diameter	New	1	Place	39,436,482	39,036,482	400,000
Damrei Phong	Rural Transport	Natural Gravel road	Repair	0.8	km	36,264,314	35,864,314	400,000
Damrei Phong	Rural Transport	Single pipe culvert 0.6m diameter	Repair	1	Place	36,264,314	35,864,314	400,000
Damrei Phong	Rural Transport	Single pipe culvert 1.0m diameter	New	3	Place	36,264,314	35,864,314	400,000
Han Chey	Rural Transport	Natural Gravel road	Repair	0.72	km	39,006,800	38,506,800	500,000
Han Chey	Rural Transport	Natural Gravel road	Repair	0.95	km	39,006,800	38,506,800	500,000
Kampong Damrei	Rural Transport	Natural Gravel road	Repair	1.2	km	66,896,067	66,396,067	500,000
Kampong Damrei	Rural Transport	Single pipe culvert 1.0m diameter	New	1	Place	66,896,067	66,396,067	500,000
Kampong Damrei	Rural Transport	Natural Gravel road	Repair	1	km	66,896,067	66,396,067	500,000
Kampong Damrei	Rural Transport	Single pipe culvert 0.6m diameter	New	2	Place	66,896,067	66,396,067	500,000
Kampong Damrei	Rural Transport	Wood bridge, 5 tonne, wood abutment	New	1	Place	31,361,616	30,861,616	500,000
Kanhchor	Rural Transport	Natural Gravel road	Repair	1.2	km	37,330,580	36,830,580	500,000
Kanhchor	Rural Transport	Natural Gravel road	Repair	0.93	km	37,330,580	36,830,580	500,000
Khsach Andaet	Rural Transport	Natural Gravel road	Repair	1.095	km	33,109,771	32,709,771	400,000
Khsach Andaet	Rural Transport	Single pipe culvert 0.6m diameter	New	3	Place	33,109,771	32,709,771	400,000
Pongro	Rural Transport	Natural Gravel road	Repair	0.8	km	43,481,932	43,081,932	400,000
Pongro	Rural Transport	Natural Gravel road	Repair	0.79	km	43,481,932	43,081,932	400,000
Pongro	Rural Transport	Natural Gravel road	Repair	0.178	km	43,481,932	43,081,932	400,000
Pongro	Rural Transport	Natural Gravel road	Repair	0.112	km	43,481,932	43,081,932	400,000
Preaek Saman	Irrigation	Earth dam	Repair	1.15	km	40,728,316	40,228,316	500,000

Commune	Project Type	Project Output		Quantity	Unit	Fund Source (Riels)		
		Description	Type			Total	C/S	Local Contribution
Preaek Saman	Irrigation	Single pipe culvert 1.0m diameter with stop logs	New	1	Place	40,728,316	40,228,316	500,000
Preaek Saman	Irrigation	Single pipe culvert 0.6m diameter with stop logs	New	1	Place	40,728,316	40,228,316	500,000
Preaek Saman	Irrigation	Earth dam	Repair	0.023	km	40,728,316	40,228,316	500,000

Source: PID

9 District level Projects from 2006 to 2009

District Initiative Projects (DIPs) are funded by Danida, DFID and PSDD (UNDP, DFID and SIDA).

Funding for 2006-2008

Between 2006 and 2008 there were 14 provinces funded by PSDD and 10 by Danida and DFID. The list of provinces and who funded these is below

Danida and DFID funded DIPs:

Kampong Cham	Kampong Speu	Koh Kong	Kratie	Monduliri
Pursat	Ratanakiri	Siem Reap	Sihanoukville	Kep

PSDD funded DIPs:

Banteay Meanchey	Battambang	Kampong Chhnang	Kandal	Phnom Penh
Prey Veng	Svay Rieng	Takeo	Kampong Thom	Preah Vihear
Stung Treng	Kampot	Oddar Meanchey	Pailin	

Funding for 2009

In 2009 there was a change to the number of provinces funded by the two streams. Danida and DFID were still funding the same 10 provinces they had been funding the previous three years, but two more provinces were added *Kampong Thom and Kampot*. Now PSDD funds 12 provinces and Danida and DFID fund 12.

9.1 District Initiative Infrastructure Projects from 2006 to 2009

9.1.1 District Initiative Infrastructure Projects for 2006 to 2008

Date	Project Name	Implementing Agencies	Budget (US\$)	Project Output & Capacity	Number of Beneficiaries
2007	Repair water reservoir of Sandan Khang keut	Inter-commune	10,000.00		
2007	Repair Chhak Ampil water reservoir	Inter-commune	6,887.00		
2007	Repair Chhak Ampil water reservoir	Inter-commune	3,307.04		
2008	Preaek Chov canal rehabilitation	Inter-commune	19,600.00	1400m and 01 culverts with gate	403 persons.

9.1.2 District Initiative Infrastructure Projects in 2009

No District Initiative Infrastructure Projects have been implemented in this district for 2009

9.2 District Initiative Service Projects from 2006 to 2009**9.2.1 District Initiative Service Projects for 2006 to 2008**

Date	Project Names	Implementing agencies	Budget (US\$)	Project Output & Capacity	Number of Beneficiaries
2007	Training and demonstration on family home gardens	District Agri	1,099.00		
2007	Training and demonstration on high yield seed.	District Agri	1,246.00		
2007	Conduct meeting on community fishery networks	Fishery Admin	832.00		
2007	Training on prevention from illegal fishing activities	Fishery Admin	768.00		
2007	Dissemination on land management and NRM	District Land	820.00		
2007	Training and demonstration on pig raising for women	District WA	1,800.00		
2008	Training on home garden technique and demonstration	District AGRI	1,782.00	4 demonstation	375 persons
2008	Fishery community strengthening	Fishery Admin	722.50	4 communittee	135 persons
2008	Campaign on fishery law illegal.	Fishery Admin	1,040.00	16 times	160 persons
2008	Cow bank	District AGRI	3,220.00	7 cows	18 persons

9.2.2 District Initiative Service Projects in 2009

Project Name	Sector	Implementing Agency	Budget	Project outputs/ capacities	No. of Beneficiaries		Progress	Remarks on Issues of Progress
					Total	Female		
Training and demonstration on rice planting technique	AGR	PDA	\$961.50	6 course	30	15	0%	
Fishery community strengthening	AGR	Fisheries Admin	\$1,547.50	5 communities	180	63	50%	Already been conducted meeting and reviewed on the membership of communities
Training on family cow, buffalo raising technique and vaccination	AGR	PDA	\$685.50	4 courses	60	30	100%	Already been trained and vaccination
Training and demonstration on home gardening technique and shelter for organic fertilizer	AGR	PDA	\$3,019.50	5 communes	60	30	50%	Already been trained and material,seed distributed.

9.3 Inter Commune Council Projects in 2008 and 2009

9.3.1 ICC Projects in 2008

No ICC projects in this district at this time

9.3.2 ICC Projects in 2009

No ICC projects in this district at this time

Source: ICC project, Ministry of Interior (DoLA), -UNDP project for Local Governance – DDLG

9.4 Other Projects in 2008 and 2009

9.4.1 RPRP

There are no RPRP projects being implemented in this district or province at this time. The RPRP is only being implemented in Svay Rieng and Prey Veng

9.4.1.1 RPRP Projects from 2006 to 2008

No RPRP projects in this district at this time

9.4.1.2 RPRP Projects in 2009

No RPRP projects in this district at this time

9.4.2 Seth Korma

9.4.2.1 Seth Korma 2007

There are no Seth Korma projects being implemented in this district or province at this time.

Source: UNICEF

9.4.2.2 Seth Korma 2008

There are no Seth Korma projects being implemented in this district or province at this time.

Source: UNICEF

9.4.2.3 Seth Korma 2009

There are no Seth Korma projects being implemented in this district or province at this time.

Source: UNICEF

SECTION D: SERVICES AND ORGANIZATIONS

10 Infrastructure

10.1 Length of and Expenditure on Roads in 2008, by District

Roads	Kratie	Chhlong	Chetrborei	Preaekbrasop	Sambor	Snoul	Kratie
Length of paved road in the district	280	27	70	0	85	73	25
Length of unpaved roads in the district	364	69	96	153	0	0	46
Amount spent on construction of roads in 2008 (\$)	33,727	n/a	33,727	0	n/a	n/a	n/a
Amount spent on repair and rehabilitation of roads in 2008 (\$)	41,867	n/a	0	41,867	n/a	n/a	n/a

Note 1: Please note that these data are not necessarily complete or correct. The data are derived from government agencies at provincial and district level which used different recording systems, did not always have complete data or were, sometimes, less than willing to share their data.

Note 2: Please be aware that these data are incomplete due to the fact that the amounts for the construction, repair and rehabilitation recorded reflect only funds provided by the government, not the contributions by any other parties.

10.2 Scale of and Expenditure on Irrigation in 2008, by District

Irrigation	Kratie	Chhlong	Chetrborei	Preaekbrasop	Sambor	Snoul	Kratie
Number of irrigation schemes operating in 2008	83	47	n/a	10	18	3	5
Total nr of hectares under irrigation in dry season 2008	7,388	2,881	1,489	1,671	135	315	897
Total funds spent in 2008 on construction of irrigation systems (\$)	10,200	0	n/a	0	n/a	10,200	n/a
Total funds spent in 2008 on rehabilitation/repair of irrigation systems (\$)	465,226	22,218	n/a	443,008	n/a	0	n/a
Total funds spent in 2008 on operation and maintenance (\$)	14,985	0	n/a	14,985	n/a	0	n/a

Note 1: Please note that these data are not necessarily complete or correct. The data are derived from government agencies at provincial and district level which used different recording systems, did not always have complete data or were, sometimes, less than willing to share their data.

Note 2: Please be aware that the data above are incomplete as these only reflect funds provided by the government, not the contributions by farmers or other parties.

10.3 Power Supply in 2008, by District

Electricity	Kratie	Chhlong	Chetrborei	Preaekbrasop	Sambor	Snoul	Kratie
Total number of electricity connections to households	7,852	1,542	0	1,181	400	850	3,879
Total number of electricity connections to agencies, companies, organizations	12	n/a	0	2	5	5	n/a
Total volume in KWh of electricity consumed last in 2008	843,973	n/a	0	40,973	36,000	800,000	n/a
Total amount collected from users for consumed electricity (in KR) (\$)	176,643	n/a	0	32,643	0	144,000	n/a
Per capita electricity consumption in 2008 in Kwh	13	n/a	0	48	15	250	n/a

Note 1: Please note that these data are not necessarily complete or correct. The data are derived from government agencies at provincial and district level which used different recording systems, did not always have complete data or were, sometimes, less than willing to share their data.

Note 2: These data only record electricity provided by electricity companies and does not include homes powered by generators or batteries (for this information see Section B: General Profile, Part 1: General Information; table 1.3.1 and chart 1.3.4).

Note 3: In most provinces electricity is only provided through town-based networks

Note 4: Per capita consumption is calculated by dividing the total volume of electricity produced in 2008 by the number of people living in each district as per the 2008 census (for the provincial data it is calculated against the number of people living in the province)

11 Health Facilities

Please note that the Operational District (health) boundaries are different to the administrative district boundaries. Therefore the data provided here shows the facilities, staff, NGOs etc in each Operational District within the province NOT the administrative district.

Acronyms

Com Cov	Commune Covered	MW2	Secondary Midwives
CPA	Complementary Package of Activities	NU1	Primary Nurse
Dr	Doctor	NU2	Secondary Nurse
FDH	Former District Hospital	OD	Operational District
HC	Health Center	Others	Other Staff
HC (NB)	Health Center no building	PHD	Provincial Health Department
HP	Health Post	Pop 04-05	Population Covered 2004 or 2005
MA	Medical Assistant	RH	Referral Hospital
MPA	Minimum Package of Activities	Vil Cov	Village Covered
MW1	Primary Midwives	VIL-HC	Distance from Village to Health Center

11.1 Health Facilities in the Province, by Operational District

Kratie	OD	RH	HC	HP
Chhlong	1	1	10	3
Kratie	1	1	12	5
Total	2	2	22	8

11.2 Health Facilities and Staff in the province, by Operational District

This table shows health facilities, staff and coverage of health facilities in each operational district.

No	Facility Name	Type	Class	Dr	Ma	Nu2	Nu1	Mw2	Mw1	Others	Com Cov	Vil Cov	Pop. 04-05
Chhlong													
1	Chambak	HC	MPA	0	0	2	2	1	2	2	2	11	15,886
2	Chroy Thma	HC	MPA	0	0	1	1	1	2	2	4	11	15,471
3	Damrei Phong	HC	CPA	0	0	0	2	0	0	4	2	6	3,348
4	Daun meas	HP	None+MI	0	0	0	0	0	0	0	1	1	2,202
5	Kanhchor	HC	MPA	0	0	1	3	2	1	1	3	10	14,508
6	Khsach Andet	HC	MPA	0	0	2	2	2	1	1	2	7	19,998
7	Khsem	HC	MPA	0	0	2	2	1	0	4	2	9	7,291
8	Pongro	HC	MPA	0	0	1	1	1	0	4	3	8	14,821
9	Preaek Prasob	FDH	CPA+MPA	0	2	3	5	1	2	4	1	9	12,353

District Data Book 2009: Development Plans and Projects

No	Facility Name	Type	Class	Dr	Ma	Nu2	Nu1	Mw2	Mw1	Others	Com Cov	Vil Cov	Pop. 04-05
10	Snuol	FDH	CPA+MPA	1	2	6	6	4	0	8	3	20	24,506
11	Srae Roneam	HP	None+MI	0	0	0	0	0	0	0	1	1	1,084
12	Stueng Thum	HP	None+MI	0	0	0	0	0	0	0	1	1	1,122
Total:				1	4	18	24	13	8	30	25	94	132,590
Kratie													
1	Ta Mau	HC	MPA	0	0	1	3	1	2	1	2	11	13,261
2	Bos Leav	HC	MPA	0	0	1	3	0	1	4	2	13	10,698
3	Chrouy Banteay	HC	MPA	0	0	2	2	2	1	2	1	7	9,218
4	Kantuot	HC	MPA	0	0	1	3	0	2	2	3	20	16,617
5	Ou Krieng	HC	MPA	0	0	1	2	0	1	3	4	21	14,463
6	Ou Ruessei	HC	MPA	0	0	1	4	3	2	1	3	12	18,197
7	Rakar Kandal	HC	MPA	0	1	0	3	2	3	1	2	7	12,264
8	Sambo	FDH	CPA+MPA	0	1	2	5	1	1	5	4	21	20,157
9	Sandan	HC	MPA	0	0	1	6	0	0	4	4	13	14,476
10	Saob	HC	MPA	0	0	2	3	0	0	3	3	10	12,012
11	Svay Chreah	HC	MPA	0	0	2	1	1	0	2	2	9	7,803
12	Thma Krae	HC	MPA	0	0	1	7	2	0	1	3	7	12,377
Total:				0	2	15	42	12	13	29	33	151	161,543
Total All				1	6	33	66	25	21	59	58	245	294,133

Source: MEDiCAM – Infrastructure - (http://www.medicam-cambodia.org/hsi/health_system/srch/index.asp?cboLcn=6&cmdSearch=Search&cboCHName=&cboType=)

11.3 Deliveries in 2007 in the Province, by Operational District

OD	Deliveries	Deliveries at home		Deliveries	Total deliveries	Total deliveries
	at HC	By Health Staff	ByTBAs	at RH	by Health Staff	by health staff and TBAs
Chhlong	47	592	656	232	871	1527
Kratie	199	504	1304	558	1261	2565
<i>Sub-total</i>	<i>246</i>	<i>1096</i>	<i>1960</i>	<i>790</i>	<i>2132</i>	<i>4092</i>

Source: MoH, Annual Statistics 2007

12 Education³

12.1 Schools, Classes, Students, Staff, for all levels, for 2007/2008 by District

District	Number of Schools	Disadv. Schools	Number of Classes	Classes in Pagoda	Enrollment		Repeaters		Teaching Staff		Non-Teaching Staff		Total Staff	
					Total	Girl	Total	Girl	Total	Female	Total	Female	Total	Female
Chhlaung	41	1	357	0	12,802	6,162	919	390	398	223	75	19	473	242
Kratie	100	2	645	2	22,559	10,572	1,833	763	729	399	146	51	875	450
Prek Prasap	66	0	449	0	15,214	7,301	1,423	561	542	299	96	21	638	320
Sambo	57	1	360	0	12,676	6,164	1,401	624	238	84	29	8	267	92
Snuol	54	1	302	7	12,182	5,663	1,449	643	200	58	22	4	222	62
Whole Province	318	5	2,113	9	75,433	35,862	7,025	2,981	2,107	1,063	368	103	2,475	1,166
- Urban Area	100	2	645	2	22,559	10,572	1,833	763	729	399	146	51	875	450
- Rural Area	161	2	1,108	7	40,198	19,126	3,791	1,594	1,140	580	193	44	1,333	624
- Remote Area	57	1	360	0	12,676	6,164	1,401	624	238	84	29	8	267	92

12.2 Characteristics of Schools and School Principals for 2007/2008 by Commune

Commune	Number of Schools				2 - Shift	Floating	Schools	Attached	Schools Without		Characteristics of School Principals (Incharge)			
	Pre-Sch	Primary	College	Lycee	Schools	Schools	in Pagoda	Pre-Sch	Water Sup.	Latrine	Avg. Age	Avg. Service	U.Sec+ Ed.	Female
Chhloung	1	3	1	0	2	0	0	1	1		54.5	27.0	0	0
Damrei Phong	0	6	1	0	6	0	1	0	5	4	37.7	16.1	1	0
Han Chey	0	2	1	1	2	0	0	0	3	1	48.3	22.3	1	1
Kampong Damrei	0	4	0	0	4	0	1	0	4	3	47.6	21.3	0	0
Kanhchor	2	3	1	0	2	0	2	2	4	3	50.7	21.8	1	1
Khsach Andaet	0	3	1	0	3	0	2	0	0		39.3	18.5	0	0
Pongro	0	3	1	0	3	0	0	0	1	1	45.3	19.8	1	0
Preaek Saman	0	6	1	0	6	0	2	0	6	3	49.0	23.9	0	1

³ All the data for section 12 comes from the Ministry of Education, Youth and Sport (MoEYS)

12.3 Enrolment by Level of Education, 2006/2007 by Commune

Commune	School	Pre school		Primary School		Lower Secondary School		Upper Secondary School		Enrolment	
		Total	Female	Total	Female	Total	Female	Total	Female	Total	Female
Chhloung	5	55	28	1209	566	879	434	0	0	2143	1028
Damrei Phong	7	0	0	1292	662	89	47	0	0	1381	709
Han Chey	4	0	0	1176	542	197	89	814	385	2187	1016
Kampong Damrei	4	0	0	564	277	0	0	0	0	564	277
Kanhchor	6	78	40	1048	499	388	213	0	0	1514	752
Khsach Andaet	4	0	0	1095	511	183	82	0	0	1278	593
Pongro	4	0	0	1528	776	596	306	0	0	2124	1082
Preaek Saman	7	0	0	1704	772	308	128	0	0	2012	900

12.4 Enrolment by Level of Education, 2007/2008 by Commune

Commune	School	Pre school		Primary School		Lower Secondary School		Upper Secondary School		Enrolment	
		Total	Female	Total	Female	Total	Female	Total	Female	Total	Female
Chhloung	5	75	40	1131	567	697	329	0		1903	936
Damrei Phong	7	0	0	1354	671	71	42	0		1425	713
Han Chey	4	0	0	1083	486	332	151	985	474	2400	1111
Kampong Damrei	4	0	0	622	301	0	0	0		622	301
Kanhchor	6	70	39	1025	493	361	196	0		1456	728
Khsach Andaet	4	0	0	1030	470	280	139	0		1310	609
Pongro	4	0	0	1392	692	392	203	0		1784	895
Preaek Saman	7	0	0	1590	736	312	133	0		1902	869

12.5 Aspects of Enrolment for 2007/2008 by Commune

Commune	% Repeaters (Total)			% Over-age Enrollment (Total)			% Repeaters (Girl)			% Over-age Enrollment (Girl)		
	Primary	L.Sec.	U.Sec.	Primary	L.Sec.	U.Sec.	Primary	L.Sec.	U.Sec.	Primary	L.Sec.	U.Sec.
Chhloung	12.5	1.4	0.0	30.9	42.3	0.0	12.3	0.9	0.0	27.9	35.3	0.0
Damrei Phong	9.0	0.0	0.0	22.0	46.5	0.0	9.8	0.0	0.0	24.1	45.2	0.0
Han Chey	9.0	0.3	2.4	19.4	22.0	39.1	7.6	0.0	1.5	19.8	20.5	33.8
Kampong Damrei	7.9	0.0	0.0	23.8	0.0	0.0	9.0	0.0	0.0	21.9	0.0	0.0

Commune	% Repeaters (Total)			% Over-age Enrollment (Total)			% Repeaters (Girl)			% Over-age Enrollment (Girl)		
	Primary	L.Sec.	U.Sec.	Primary	L.Sec.	U.Sec.	Primary	L.Sec.	U.Sec.	Primary	L.Sec.	U.Sec.
Kanhchor	10.0	3.9	0.0	26.0	49.3	0.0	6.9	3.1	0.0	22.9	42.9	0.0
Khsach Andaet	12.6	0.0	0.0	32.2	53.9	0.0	9.1	0.0	0.0	28.5	47.5	0.0
Pongro	5.9	1.3	0.0	28.8	43.9	0.0	4.0	0.5	0.0	31.2	42.9	0.0
Preaek Saman	7.5	6.7	0.0	20.9	46.5	0.0	8.3	5.3	0.0	18.5	41.4	0.0

12.6 School Buildings for all schools in the District for 2007/2008, by Commune

Commune	Total Number of		Concrete/Brick Structure		Wooden Structure		Bamboo Structure		New Buildings		Buildings Without Good		
	Buildings	Rooms	Buildings	Rooms	Buildings	Rooms	Buildings	Rooms	Repaired	Constructed	Floor	Roof	Wall
Chhloung	12	57	10	49	2	8	0	0	0	0	3	3	1
Damrei Phong	8	31	4	20	4	11	0	0	0	2	0	3	2
Han Chey	14	69	12	61	2	8	0	0	0	0	2	0	1
Kampong Damrei	4	11	1	4	3	7	0	0	0	0	1	1	2
Kanhchor	9	35	5	25	4	10	0	0	1	0	4	1	2
Khsach Andaet	6	36	6	36	0	0	0	0	0	1	0	0	0
Pongro	10	40	8	34	2	6	0	0	0	0	2	2	2
Preaek Saman	11	39	7	26	4	13	0	0	0	0	0	0	0

12.7 Conditions of Classrooms and Existence of Separate School Office and Library, by Commune

Commune	Number of Class rooms	Number of Classrooms			Classrooms Without Good			Number of Furniture needed				Schools with Separate	
		in Pagoda	New Repaired	New Constr.	Floor	Roof	Wall	Desks	Chairs	Black-board	Teacher Table	Office	Library
Chhloung	42	0	0	0	10	7	5	0	0	0	0	3	3
Damrei Phong	23	0	0	3	0	8	2	50	50	5	5	3	1
Han Chey	48	0	0	0	10	0	4	0	0	0	0	3	2
Kampong Damrei	10	0	0	0	2	2	4	40	40	2	4	1	0
Kanhchor	29	0	2	0	13	2	5	40	0	2	2	4	2
Khsach Andaet	24	0	0	8	0	0	0	0	0	0	0	4	2
Pongro	32	0	0	0	6	6	6	20	20	0	2	3	1
Preaek Saman	34	0	0	0	0	0	0	30	5	0	3	3	1

12.8 Community Participation and Financing across all schools in the District for 2007/2008 by Commune

Commune	Parent Association				Comm. Teachers	Teaching Monks	PAP Fund (Riel)		Number of Schools Obtaining Funds from				
	Exists	Held Meet	Total	Female			per Student	per School	Sch. Income	Community	Gvt. For building	Abroad	IOs/NGOs
Chhloung	5	5	5	1	0	0	16,769	5,705,500	0	0	0	0	0
Damrei Phong	7	7	6	1	0	0	11,043	2,628,125	0	0	0	0	0
Han Chey	4	4	6	2	0	0	12,521	8,305,533	0	0	1	0	0
Kampong Damrei	4	4	5	1	0	0	11,601	1,635,750	0	0	0	0	0
Kanhchor	4	4	6	1	0	0	9,085	2,989,000	0	1	0	0	0
Khsach Andaet	4	4	4	0	0	0	9,052	2,437,983	0	0	0	0	2
Pongro	4	4	7	1	0	0	11,808	6,270,100	0	0	0	0	0
Preaek Saman	7	7	5	1	0	0	10,139	2,914,357	0	0	1	0	0

12.9 Percentage Student Flow Rates and Graduation by level 2006/2007, by Commune

Commune	Primary Level (Grades 1-6)			Lower Secondary Level (Grades 7-9)			Upper Secondary Level (Grades 10-12)			Successful Candidates		
	Promotion	Repetition	Dropout	Promotion	Repetition	Dropout	Promotion	Repetition	Dropout	Grade 6	Grade 9	Grade 12
Chhloung	80.9	11.7	7.4	83.2	1.1	15.7	0.0	0.0	0.0	166	250	0
Damrei Phong	87.3	9.4	3.3	49.4	0.0	50.6	0.0	0.0	0.0	110	8	0
Han Chey	86.9	8.3	4.8	89.3	0.5	10.2	77.5	2.9	19.5	157	0	136
Kampong Damrei	90.6	8.7	0.7	0.0	0.0	0.0	0.0	0.0	0.0	50	0	0
Kanhchor	84.6	9.8	5.5	67.5	3.6	28.9	0.0	0.0	0.0	127	55	0
Khsach Andaet	79.5	11.9	8.7	82.5	0.0	17.5	0.0	0.0	0.0	150	0	0
Pongro	81.2	5.4	13.5	67.4	0.8	31.7	0.0	0.0	0.0	155	132	0
Preaek Saman	80.6	7.0	12.4	66.6	6.8	26.6	0.0	0.0	0.0	192	45	0

13 Staff and Resources at the District

This chapter presents data from the District Information System, collected around the middle of 2009 unless otherwise specified.

13.1 District Councilors elected in 2009

Name	Sex	Year of Birth	Function	Phone
ប៊ុន វេន	M	1937	Chairperson of The Council	012-454 758
ប៊ែ គឹមហាន	M	1950	Councillor	012-420 588
អ៊ាង សាប៊ុន	M	1949	Councillor	012-357 215
ឈួរ ប៊ុនលាង	M	1946	Councillor	012-884 983
ដូរ ជឿន	M	1947	Councillor	089-365 445
ម៉ុត ណារី	F	1948	Councillor	012-485 876
សាន់ ឡានីន	M	1955	Councillor	011-232 771
ថោង ហាន	M	1943	Councillor	017-539 998
ជុំ ហង្សស៊ា	M	1952	Councillor	012-866 373
ហួយ ភន	M	1950	Councillor	011-455 665
ចក់ ជិន	M	1951	Councillor	092-692 889
ហេង ឡេង	M	1950	Councillor	012-302 823
ណាំ សុភ័ក្ត្រ	M	1979	Councillor	012-790 751
ហេ សុខុម	F	1957	Councillor	092-306 345
ត្រួយ អេក	M	1963	Councillor	092-358 282

13.2 Committees of the Council

Please note at the time of producing the district data books the composition of the committees was not known for all district councils and therefore data were not available for 13.2.1, 13.2.2, 13.2.3.

13.2.1 Technical Facilitation Committee

13.2.2 Women's and Children's Affairs Committee

13.2.3 Procurement Committee

13.3 Board of Governors

Name	Sex	DoB	Function	Salary Level	Body	Phone
ស្រី ឈារីត	M	1966	District Governor	ក.ព.១២	High Ranking Civil Servant	012-489 719
ហង់ ចាន់ឌី	M	1968	District Deputy Governor	ក.ព.៨	High Ranking Civil Servant	012-983 048
ម៉ែន សុផល	F	1968	Municipality deputy governor	ប.ព.៩	Administrative Agent	092-442 668
ប៊ុន កឹមហ៊ុ	M	1954	District Deputy Governor	ខ.ព.៦	Medium Civil Servant	011-214 842

13.4 Offices under Sala Krong, Sala Srok and Sala Khan

Office Name	Chief		Deputy Chief		No. of Staff				Office Area (m2)	No of vehicle (public or program)	
					State		Contract			vehicle	moto
	M	F	M	F	M	F	M	F			
Adminnistration Office	0	1	1	0	8	6	0	0	48	0	0
Economy Office	0	0	0	0	1	0	0	0	48	0	0
Social Affair Office	0	0	1	0	1	0	0	0	48	0	0

13.5 Municipality/District/Khan line offices

Office Name	Chief		Deputy Chief		No. of Staff				Office Area (m2)	No of vehicle (public or program)	
					State		Contract				
	M	F	M	F	M	F	M	F		vehicle	moto
District/ Khan Police Headquarter	1	0	5	0	156	7	0	0	0	0	11
District/ Khan Military Police Headquarter	1	0	3	0	3	0	0	0	102	0	1
District/ Khan Military Subregion	1	0	3	0	14	0	0	0	97	0	0
Women Affairs Office	0	1	0	0	0	0	0	0	0	0	0
Environment Office	0	0	1	0	0	0	1	0	0	0	0
Education Office	1	0	1	0	240	241	0	0	144	0	0
District/ Khan Operational Office	1	0	2	0	53	24	0	0	609	3	21
Agriculture Office	1	0	0	0	0	0	0	0	96	0	0
Information Office	1	0	0	0	0	0	0	0	95.5	0	0
Public Work Office	1	0	0	0	0	0	0	0	0	0	0
Lan Management Office	1	0	0	0	2	0	0	0	75.84	0	0
Industry Office	1	0	0	0	0	0	0	0	0	0	0
Forestry Administration Sangkat	1	0	3	0	3	0	0	0	63	0	0
Forestry Administration Unit	1	0	3	0	4	0	0	0	63	0	0
Fishery Sangkat	1	0	0	0	0	0	0	0	0	0	0

13.6 Properties and Equipment of District Administration

13.6.1 Buildings

Description	Unit	Number	Remark
Office building type			
- Concrete	building	3	
- Wood	building	0	
- Mixed	building	0	
Total floor space	m2		
- Concrete	m2	101.26	

Description	Unit	Number	Remark
- Wood	m2	0	
- Mixed	m2	0	
Building condition			
- Concrete	%	60	
- Wood	%	0	
- Mixed	%	0	
Office reserved land area	m2	0	
Total office land area	m2	9,493	

13.6.2 Means of Transport available at the District Administration

Description	Unit	Number	Remark
Vehicle (type, size and condition)	Vehicle	0	
Motorcycle (type, size and condition)	Motor	0	

13.6.3 Equipment in District Offices

Description	Unit	Number	Remark
Generator	per set	0	
Photocopy machine at the office	per set	1	
Private photocopy machine at the district town	place	4	
Telephone network (mobile line service)	network	3	
Telephone network (land line service)	network	1	
Fax (include Fax number)	per set	0	
Computer	per set	7	
Printer	per set	2	
Scanner	Per set	0	
Number of computers those can access Internet and email services in the municipality/ district/khan office (including the technical line offices (please provide the email address)	set	0	
Typewriters (including the technical line offices)	per set	0	
Staff of Municipality/district/khan office can use computer	person	6	

13.6.4 Equipment and facilities at the District Town

Description	Unit	Number	Remark
Availability of electricity at noon	Nr Hours	12	
Private internet and email services in the municipality/ district/khan town.	place	0	

13.7 Registered Revenue of the District Administration in 2008⁴

Sources of Revenue	Revenue Collecting Agency	Estimated annual revenue (In Riels)
Shopping Store	District/ Khan Taxation Unit	8,724,000
Patent Fee	District/ Khan Taxation Unit	5,966,000
Slaughter Hosue	District/ Khan Taxation Unit	4,285,000
Transportation Tax	District/ Khan Taxation Unit	53,105,000

⁴ Please note that the data in this table are at best estimates. If the table appears blank it does not mean there is no revenue, just that the data have not been recorded/entered.

13.8 Services in the District

13.8.1 Public Sector Services

Type of Infrastructure/services	Unit	Number	
		Public	Private
Schools			
Pre-school	room		
Primary School	room	207	0
Secondary school	room	71	0
High School	room	36	0
University	room		
Health			
Health post	place		
Health center	place	5	0
Referral Hospital	bed	70	0

13.9 Civil Society Organizations active in the District

13.9.1 NGOs, Associations, Programs and Projects

Name	Abbr.	Sector Activities	No. of Target Communes	No. of Target Villages	Office in District
CED	CED	ការគ្រប់គ្រងធនធានធម្មជាតិ	2	0	No
PADEK	PADEK	កសិកម្ម អប់រំ សុខាភិបាល ក្រុមជួយខ្លួនឯង	3	17	Yes
PICNEERT	None	មិនមាន	0	0	Yes
AFH	None	សុខាភិបាល	8	40	Yes

13.9.2 Political Parties active in the Municipality, District and Khan

Name	Abbr.	Office in District
Cambodian People Party	CPP	Yes
FUNCINPEC Party	FUNCINPEC	Yes
Human Rights Party	HRP	Yes
NRP	NRP	Yes
SAM RAINSY Party	Sam Rainsy Party	Yes

13.10 Private Sector Organizations

13.10.1 Registered Companies in 2008, by District

On private sector at commune and/or district level	Kratie	Chhlong	Chetrborei	Preaekbrasop	Sambor	Snoul	Kratie
Businesses and Companies							
Number of registered agricultural enterprises (except family farms)	1	0	0	0	0	1	0
Number of registered shops, restaurants, transporters and other services	401	n/a	n/a	n/a	n/a	279	122
Number of manufacturing companies	18	6	0	10	0	2	0
Number of registered forestry enterprises	25	6	3	1	8	7	0
Number of registered mining companies	1	0	0	0	0	1	0
Number of financial institutions	8	4	0	1	1	2	0
Number of other commercial institutions	1	n/a	n/a	n/a	n/a	1	n/a
Estimated number of informal enterprises (not registered)	245	n/a	n/a	n/a	n/a	245	n/a
Employment							
Number of people employed in 2008 by companies or any other enterprises	1,437	n/a	n/a	37	n/a	1,400	n/a
Investment							
Amount invested in 2008 by private sector (\$)	n/a	n/a	n/a	n/a	n/a	n/a	n/a
Markets							
Number of markets, operating at least weekly	25	8	10	3	1	1	2

Note: These data are not comprehensive as different companies and business are registered with different departments and not all departments were able or willing to provide detailed information. The number of informal enterprises reflects a rough estimate, made at provincial level and could not be verified.

Source: Unofficially collected at Provincial Level

13.10.2 Farmers in 2008, by District

Credit	Kratie	Chhlong	Chetrborei	Preaekbrasop	Sambor	Snoul	Kratie
Volume of credit provided to farmers in 2008 (\$)	-	n/a	n/a	n/a	n/a	n/a	n/a
Number of farmers receiving credit in 2008	-	n/a	n/a	n/a	n/a	n/a	n/a
Volume of credit provided to companies in 2008 (\$)	-	n/a	n/a	n/a	n/a	n/a	n/a

Note: Please note that these data are not necessarily complete or correct. The data are derived from government agencies at provincial and district level which used different recording systems, did not always have complete data or were, sometimes, less than willing to share their data.

Source: Unofficially collected at Provincial Level

SECTION E: POVERTY DATA

14 Data on Poverty

14.1 Predicted Poverty Rates for 2009, by commune

The **Predicted Family Poverty Rate** is based on a statistical model (robust multilevel mixed effect regression) at village level developed by the NCDD M&E Unit and uses CDB data for making an estimate of the predicted poverty rate (this is: *the portion of total families in the district or commune who are expected to be poor*) for the following year using current year data.

The basis for this predicted poverty rate also uses IDPoor (a project of the Ministry of Planning with technical assistance provided by GTZ) data

Commune	2004	2009
Chhloung	34.30%	32.70%
Damrei Phong	49.80%	47.40%
Han Chey	32.80%	27.40%
Kampong Damrei	49.80%	46%
Kanhchor	38%	30.60%
Khsach Andaet	36.80%	31.30%
Pongro	32.90%	28.60%
Preaek Saman	44.30%	39%

14.2 Poverty data from survey

14.2.1 Identification of Poor Households Program (IDPoor)

The Ministry of Planning IDPoor Program has developed standardized Procedures for Identification of Poor Households in rural areas. These Procedures are implemented using a participatory and consultative process by sub-national government structures and community representatives.

The IDPoor Program is managed by the Ministry of Planning (MOP), in cooperation with the Ministry of Interior's Department of Local Administration (DOLA). The program is supported by the Federal Republic of Germany, with technical assistance provided by German Technical Cooperation (GTZ). In 2009, AusAID also provided funding support to the Program.

Objective

The IDPoor Program aims to implement the Procedures for Identification of Poor Households in rural areas as widely as possible, in order to provide data on the level of poverty of areas and households that can be used by a large range of institutions and organizations for targeting services and development assistance to poor areas and poor households.

Coverage: During 2007, 2008 and 2009 the IDPoor Procedures have been implemented in 18 provinces (with partial or complete coverage), covering a total of around 7000 rural villages. The MOP and a number of NGO partners who are Health Equity Fund Operators have collaborated in collecting this data from different areas.

Categorization: Identified poor households are classified under two poverty categories: Poor Level 1 (very poor), and Poor Level 2 (poor). Households are classified based on data collected using a standard questionnaire, together with consideration by villagers of these households' special circumstances.

Further information: Please go to the IDPoor Program webpage at www.mop.gov.kh/Projects/IDPoor/tabid/154/Default.aspx

Commune	Poor 1 HHs	Poor 2 HHs	Poor 1 HHs	Poor 2 HHs	Total Poor 1&2 HHs	Total HHs in Commune
Chhloung	354	176	25.7%	12.8%	38.5%	1375
Damrei Phong	301	219	30.1%	21.9%	52.0%	1000
Han Chey	189	273	12.3%	17.7%	30.0%	1540
Kampong Damrei	157	153	31.8%	31.0%	62.8%	494
Kanhchor	244	264	25.1%	27.2%	52.3%	972
Khsach Andaet	175	178	16.0%	16.3%	32.3%	1094
Pongro	239	292	14.4%	17.6%	31.9%	1663
Preaek Saman	505	489	29.5%	28.6%	58.1%	1711